

Guide to dog areas in the Byron Shire

Dogs in the Byron Shire must be “on-lead” at all times
EXCEPT when in an “off-lead” area.
Dogs must not enter a “prohibited” area.



Information accurate at 20.03.2025, including updates.

Guide to dog areas in the Byron Shire

Contents

Dog must be on-lead unless.....	1
Dog off-lead areas	1
Prohibited areas	2
Dog behaviour and etiquette.....	3
Bangalow.....	4
Broken Head	8
Brunswick Heads.....	9
Byron Bay	12
Mullumbimby.....	18
New Brighton & South Golden Beach	25
Ocean Shores.....	30
Suffolk Park	33
Useful contacts.....	37



Dogs must be on-lead unless...

Byron Shire Council encourages responsible dog ownership so that people and dogs can safely and peacefully co-exist within our community and environment and our beautiful beaches, parks and open spaces can be enjoyed by everyone.

Unless identified by designated off-lead or dog prohibited areas, dogs must be on a lead in a public place. This is the law under the *Companion Animals Act 1998*.

Dog off-lead areas

Dogs are only permitted to be “off-lead” in designated areas. This guide provides information for residents and visitors about these designated areas and where they can take their dogs off-lead in the Byron local government area.



Council has eight locations designated as off-lead exercise areas. This includes parks and beaches of different sizes and locations across the Shire. Maps of these areas are contained in this Guide. Some areas have conditions about when they can be used.

On or off-lead, dogs must always be under the control of a competent person. When a dog is in a public place, the owner must also:

- have a collar and name tag (with an address or phone number) on their dog
- immediately clean up after their dog when it poos
- not have more than four dogs

On off-lead beach areas, dogs are only permitted within the inter-tidal zone and must be kept off dunes.

Dog owners are liable if their dog attacks a person or another animal. Council rangers regularly patrol all off-lead areas and all regulations will be enforced.

Information in this document is accurate at the time of publication. Information may subsequently be updated. Please regularly check Byron Shire Council's website to make sure you have the most updated version of this document.

Scan the QR code below with your smartphone to link to the Byron Shire Council's Off-Lead Area information:



Dog owners can be issued a significant on-the-spot fine for:



failing to keep a dog under effective control



having a dog off-lead when not in a designated off-lead area



not picking up dog waste

Prohibited areas

There are some places in the Byron Shire where dogs are prohibited under the *Companion Animals Act 1998*. This includes:



- Within 10m of a children's playground
- Within 10m of public food preparation and eating areas
- Any area that has been declared a dog prohibited area by Council
- Recreation areas where dogs are prohibited

Council declares dog prohibited areas for different reasons. For example, the Byron Shire has a diverse environment with local wildlife and habitat that is vulnerable to domestic pets. This includes shorebirds and koalas. Unfortunately, many native Australian animals are attacked by domestic dogs each year.

Whilst we know most dog owners are mindful to protect native species, some people still do not follow the rules and exercise their dogs in protected areas. This can easily lead to attacks on native wildlife and damage to their habitat.

Council is also conscious of the potential for conflict between dogs and people. Even when a dog is typically well behaved, busy and noisy situations can be stressful and result in abnormal behaviour. For these reasons, Council has declared some public spaces as dog prohibited such as:

- Wildlife protection areas within certain housing estates
- Popular beaches such as Byron Bay Main Beach
- Highly utilised sportsgrounds such as the Cavanbah Centre

Maps of these areas are contained in this Guide. Council rangers regularly patrol all of these declared areas and regulations will be enforced.

In addition, dogs are prohibited from land reserved or acquired under the *National Parks and Wildlife Act 1974* and marine parks under the *Marine Estate Management Act 2014*. This includes National Parks, Nature Reserves and Marine Parks. NSW National Parks & Wildlife Service (NPWS) is responsible for enforcing restrictions in National Parks and Nature Reserves. Fisheries Officers are responsible for enforcing restrictions in Marine Parks. Council works in partnership with NPWS and Department of Primary Industries - Fisheries and Marine Parks (and other agencies), to raise awareness about the rules in these areas

These areas within the Byron Shire are also identified in the maps contained in this Guide. Rangers from the NPWS regularly patrol these areas.



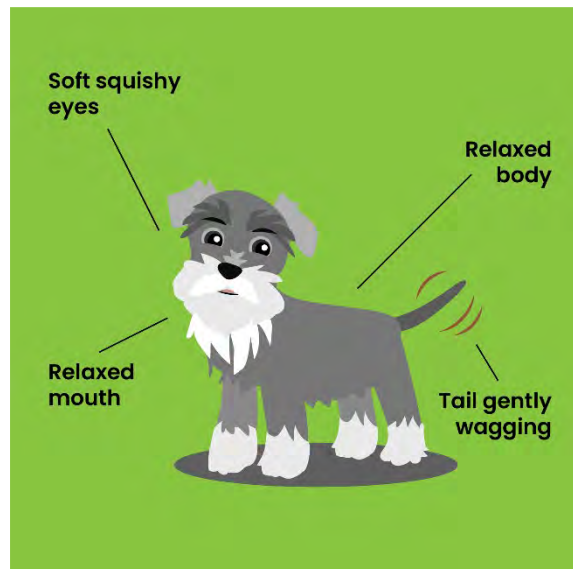
Dog owners can be issued a significant on-the-spot fine for taking a dog into a prohibited place or within National Parks or Nature Reserves.

Dog behaviour and etiquette

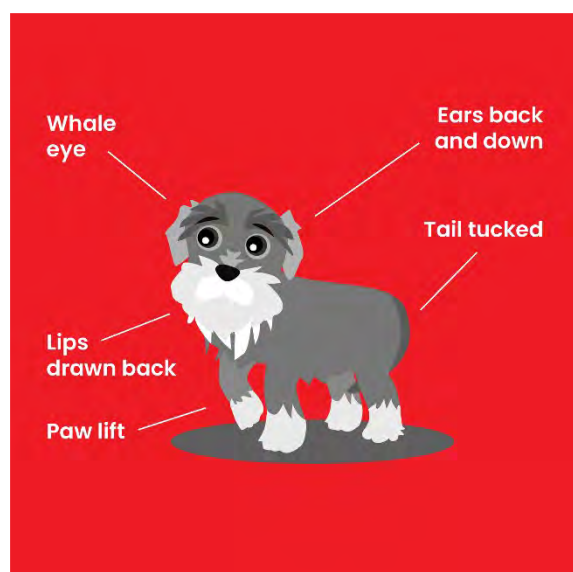
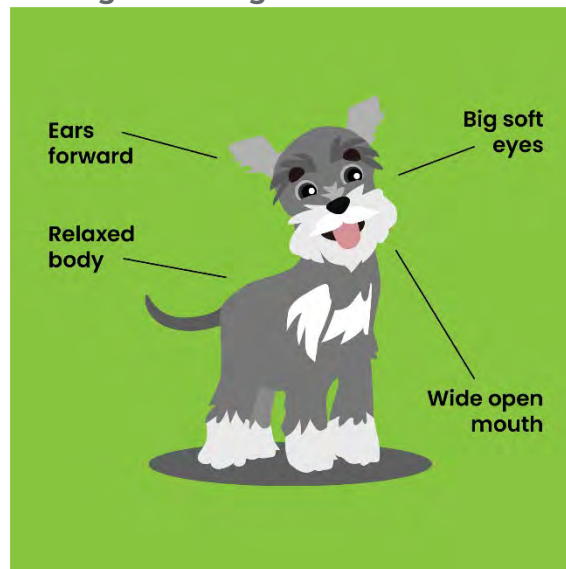
Dog communication signals

Make sure you are aware of the following canine communication signals:

Relaxed vs fear



Smiling vs waning



Reporting any concerns

If you have a concern about the behaviour of a dog within a public place, you can report this to Council:

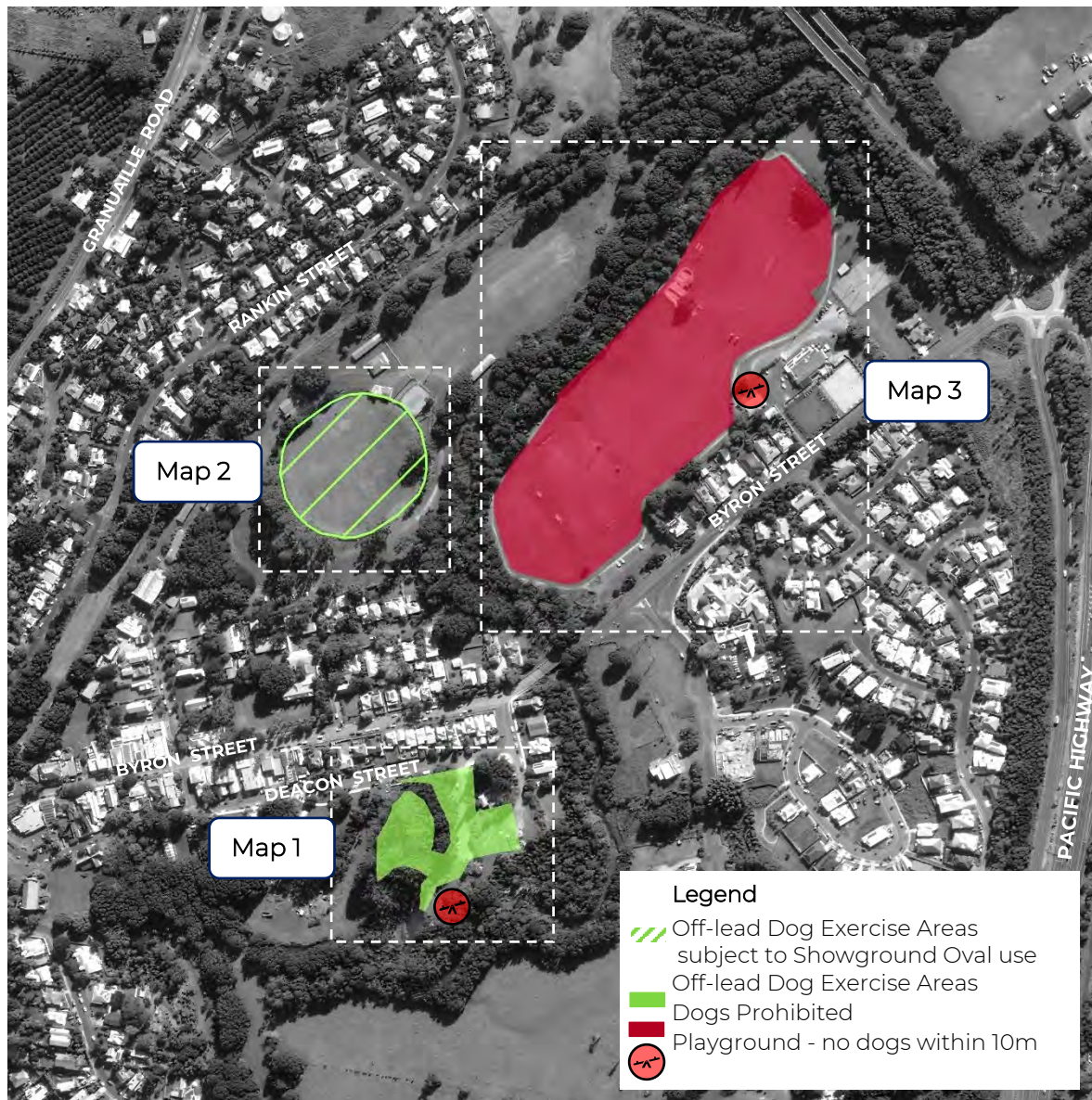
1. Through the 'Snap Send Solve' or 'Report It' Apps.
2. By calling council's enforcement team on 02 6626 7017 (business hours) or 02 6622 7022 (outside business hours).
3. By submitting a report via Council's website.
4. By writing a letter or email to Council.
5. Visiting Council's customer service counter in Mullumbimby.

NOTE: All dog attacks should be reported immediately via telephone to Council or Police

Bangalow

The following dog areas are applicable in Bangalow:

- o Map 1 – Bangalow Weir Parklands
- o Map 2 – Bangalow Showground Oval
- o Map 3 – Bangalow Sportsfields

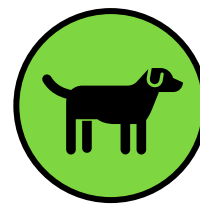


Aerial photo sourced from Landchecker
Aerial photo taken August 2021

Date: June 2022
Scale 1:10,000 (approx.) at A4 Size

Bangalow Weir Parklands (Map 1)

Bangalow Weir Parklands off-lead dog exercise area is located off Deacon Street on the southern side of Bangalow. The area is bounded by Deacon Street to the north, Ashton Street to the east and encompasses an area surrounded by a drainage line adjoining Byron Creek.



Dogs are prohibited within ten (10) metres of the children's play equipment and BBQ area.



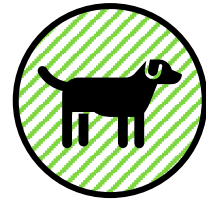
Aerial photo sourced from Landchecker
Aerial photo taken August 2021

Date: June 2022
Scale 1:2,000 (approx.) at A4 Size

Bangalow Showground Oval (Map 2)

Bangalow Showground Oval off-lead dog exercise area is bounded by the oval fencing within Bangalow Showground.

Dogs are only permitted off-lead when the Showground Oval is not booked or not in use for agricultural or showground related activities.



Aerial photo sourced from Landchecker
Aerial photo taken August 2021

Date: June 2022
Scale 1:2,500 (approx.) at A4 Size

Bangalow Sports Fields (Map 3)

Dogs are prohibited at all times on the three football fields, two cricket fields, one rugby oval, practice wickets and skatepark at Bangalow Showground. Dogs are permitted on-lead on the paved perimeter path only.

Dogs are prohibited within ten (10) metres of the children's play equipment and BBQ area.



Aerial photo sourced from Landchecker
Aerial photo taken August 2021

Date: June 2022
Scale 1:4,000 (approx.) at A4 Size

Broken Head



Broken Head (Map 4)

Dogs are prohibited at all times throughout the Broken Head Nature Reserve, including:

- o Broken Head Beach
- o Kings Beach
- o Brays Beach
- o Whites Beach
- o Seven Mile Beach (area within the Byron Shire)



Aerial photo sourced from Landchecker
Aerial photo taken August 2021

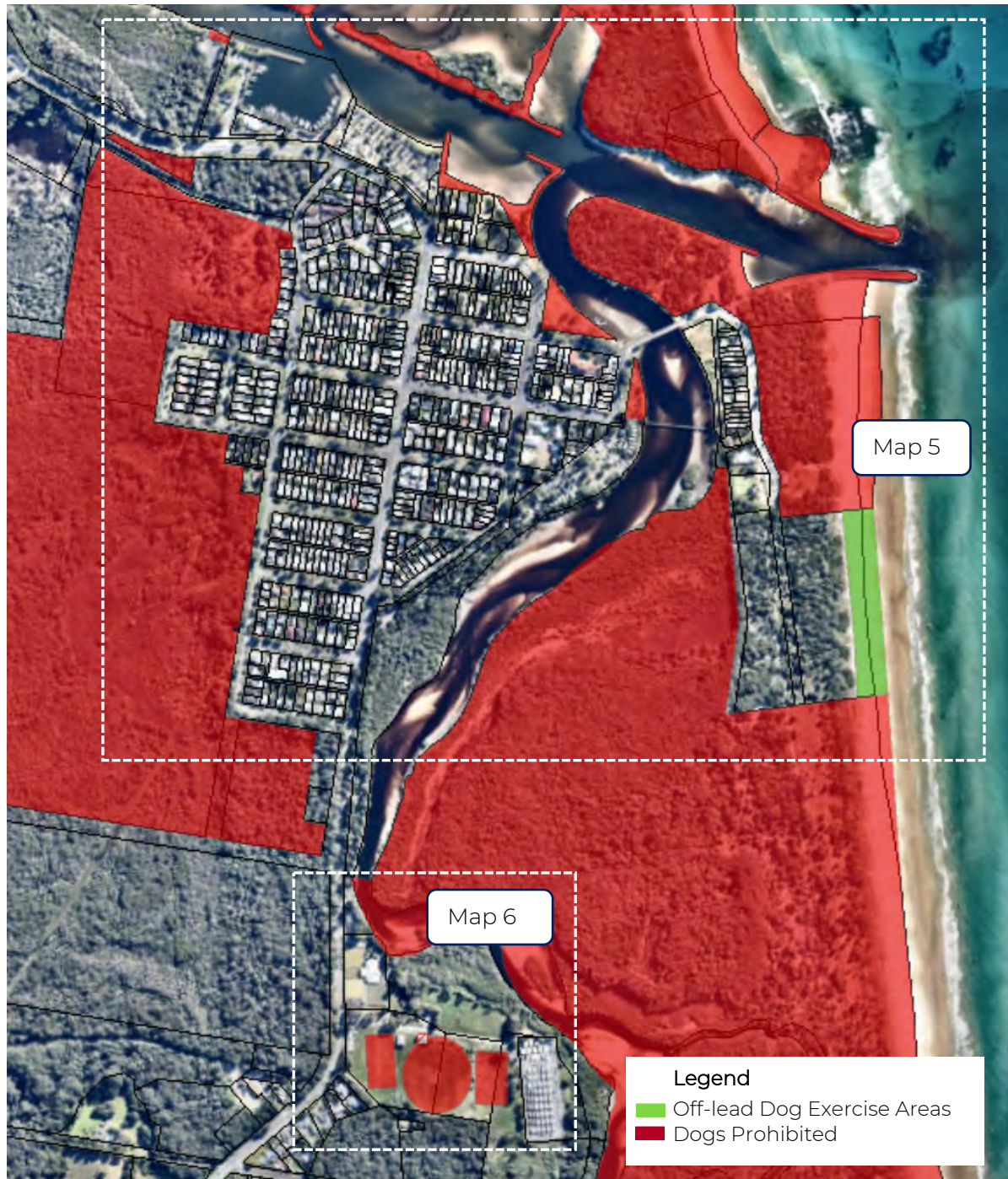
Date: November 2022
Scale 1:40,000 (approx.) at A4 Size

Brunswick Heads

The following dog areas are applicable in Brunswick Heads:

- o Map 5 – Brunswick Heads & Beach
- o Map 6 – Brunswick Heads Beach Sport Fields

Dogs are prohibited in Tyagarah Nature Reserve and Brunswick Heads Nature Reserve.



Aerial photo sourced from Landchecker
Aerial photo taken August 2021

Date: June 2022
Scale 1:13,000 (approx.) at A4 Size

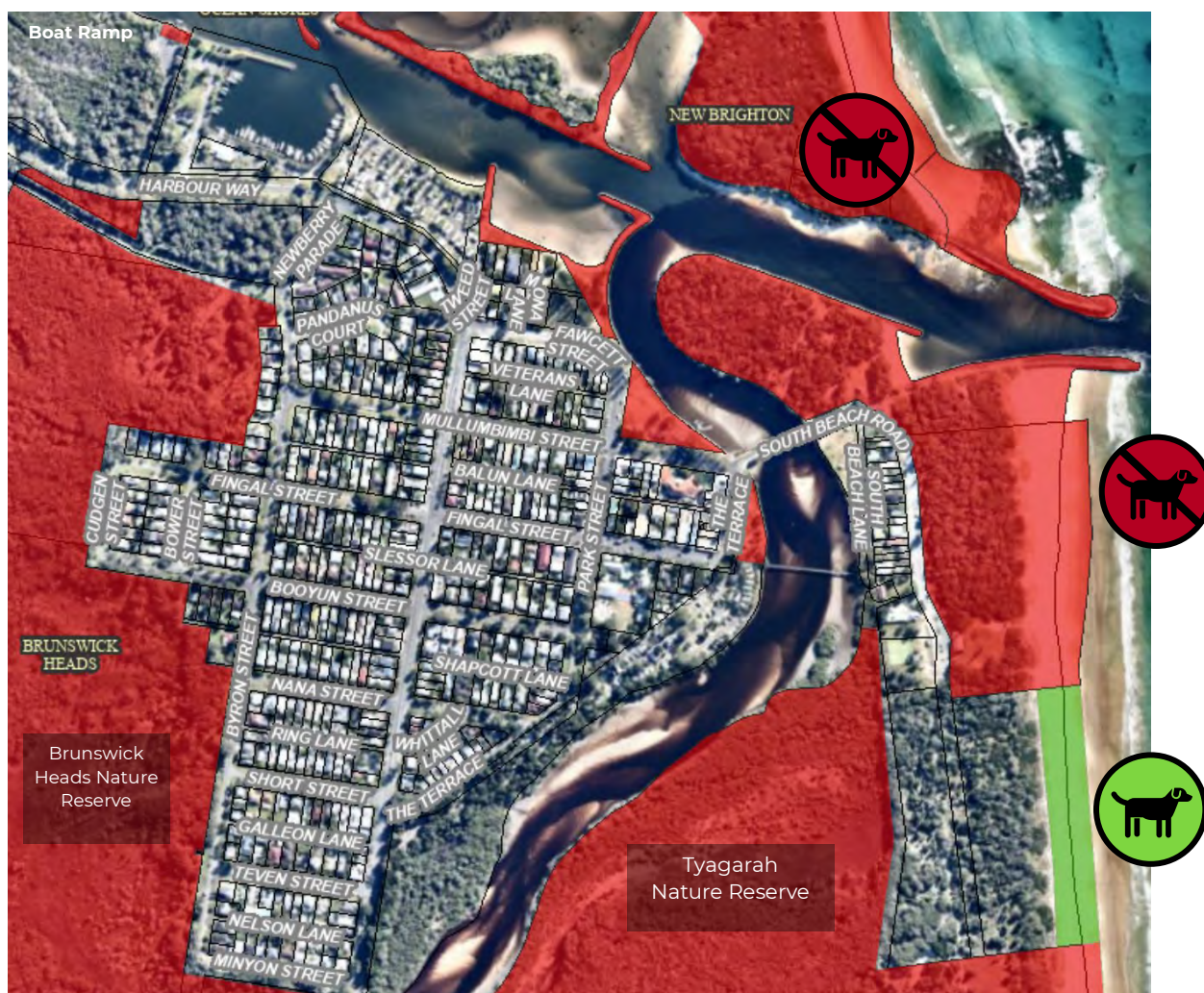
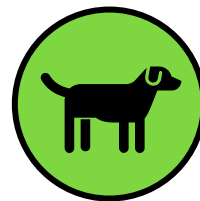
Brunswick Heads & Beach (Map 5)

Brunswick Heads Beach off-lead dog exercise area extends from a point around 50m south of the Brunswick Surf Life Saving Club area and extends for 400 metres to the south to the boundary of Tyagarah Nature Reserve.

Dogs are permitted in the inter-tidal zone only. Dog owners must keep their dogs off dune and dune rehabilitation areas.

Dogs are prohibited along Brunswick Heads Beach north of the Brunswick Surf Life Saving Club beach access point to and along the breakwall, including any patrolled area. Dogs are prohibited at Brunswick Heads Boat Ramp, Banner Park, Torakina Park, Terrace Park and all break walls.

Dogs are also prohibited in Tyagarah and Brunswick Heads Nature Reserves.



Legend

- Off-lead Dog Exercise Areas
- Dogs Prohibited

Aerial photo sourced from BSC Geocortex
Aerial photo taken August 2021

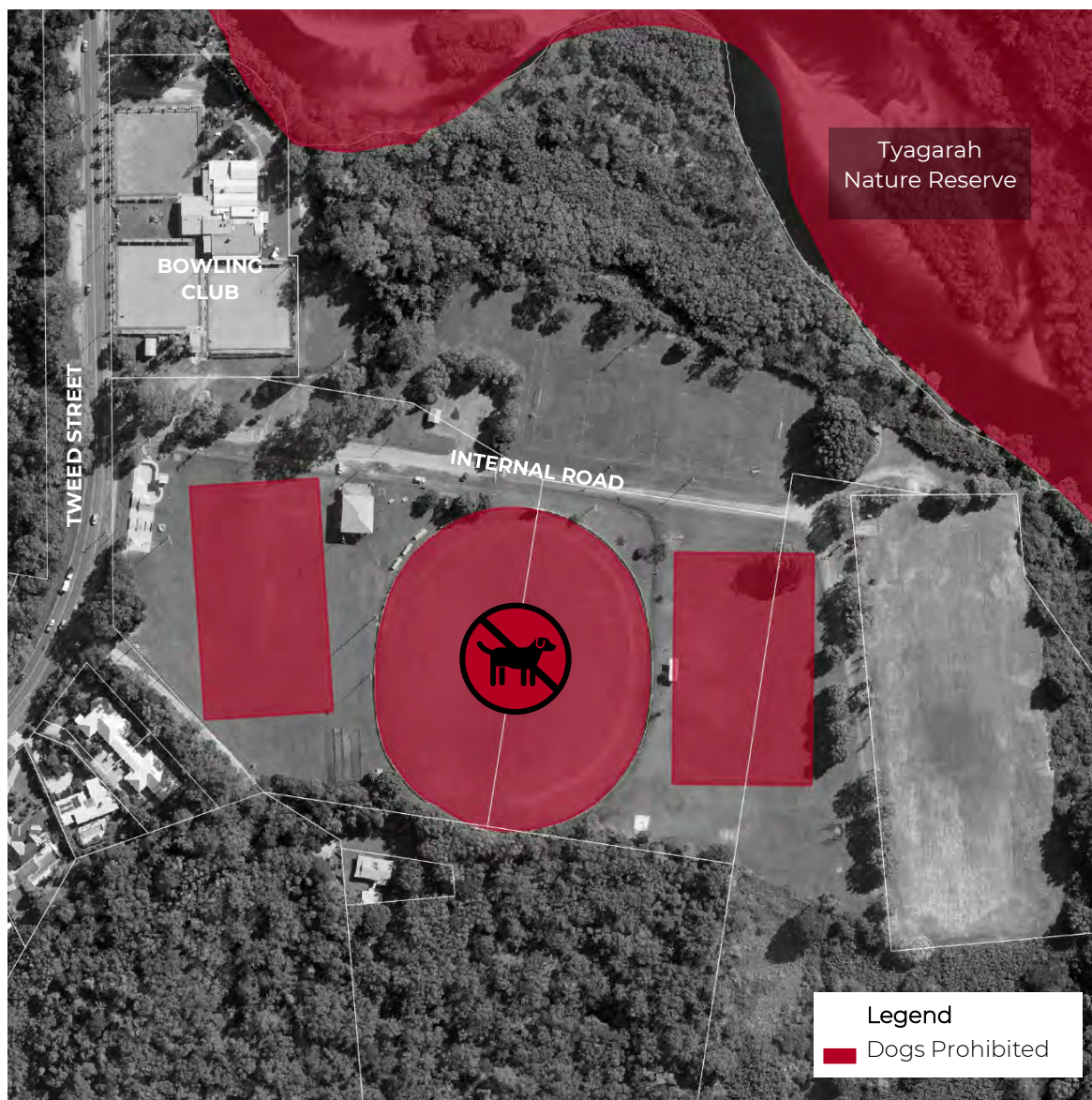
Date: August 2024
Scale 1:10,000 (approx.) at A4 Size

Brunswick Heads Sports Fields (Map 6)

Dogs are prohibited at all times on playing fields south of the internal road at Brunswick Heads Sports Fields. This includes Alby Lofts Oval, Stan Thompson Oval and the hockey field. Organised dog training may only be permitted on this dog prohibited area where a short-term license occurs.



Dogs are prohibited in Tyagarah Nature Reserve.



Aerial photo sourced from Landchecker
Aerial photo taken August 2021

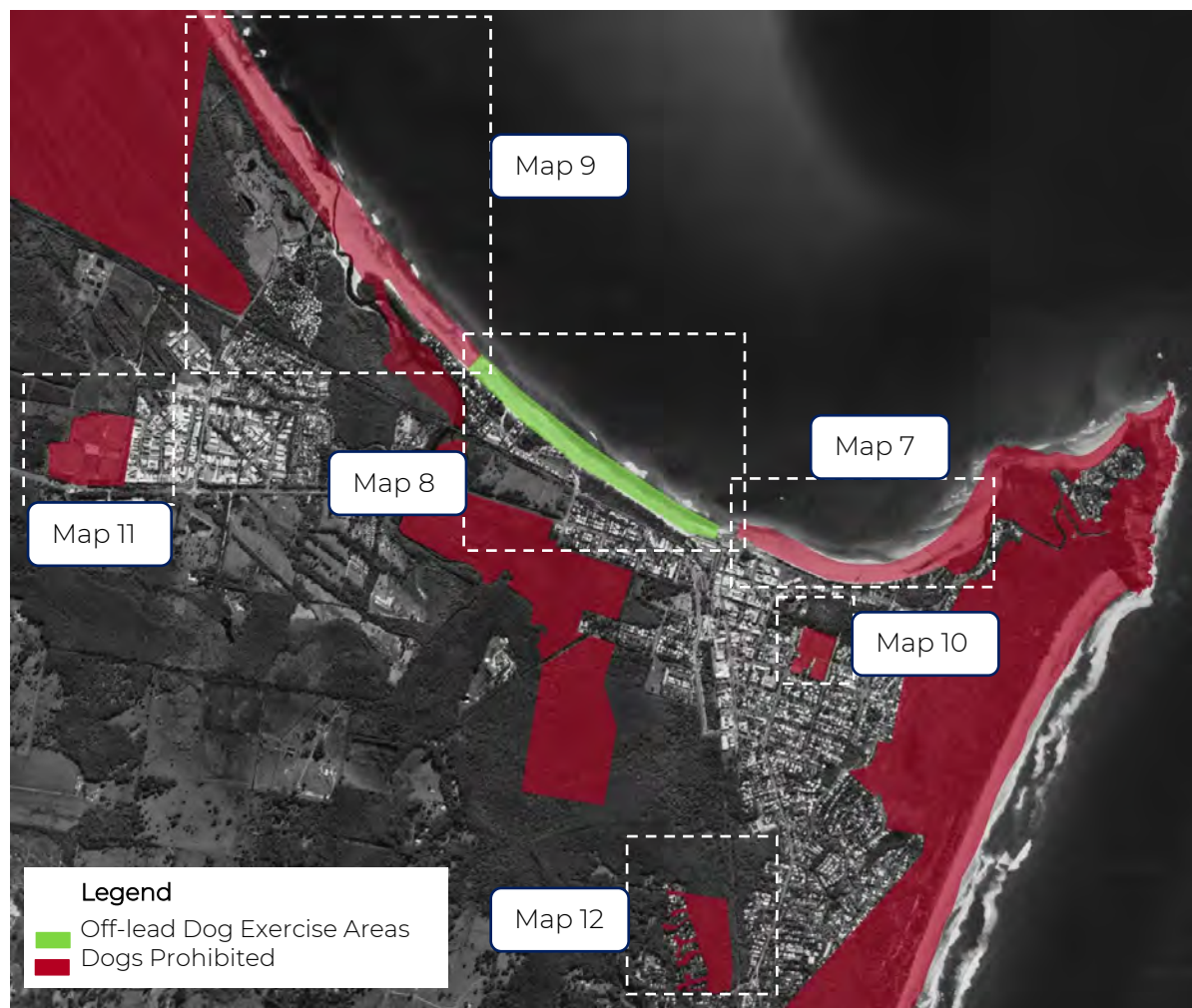
Date: June 2022
Scale 1:5,000 (approx.) at A4 Size

Byron Bay

The following dog areas are applicable in Byron Bay:

- Map 7 – Byron Bay Main Beach
- Map 8 – Belongil Beach South
- Map 9 – Belongil Beach North
- Map 10 – Byron Bay Memorial & Recreation Grounds
- Map 11 – Cavanbah Centre
- Map 12 – Lilli Pilli Estate

Dogs are prohibited in Cumbebin Swamp Nature Reserve and Arakwal National Park.



Aerial photo sourced from Landchecker
Aerial photo taken August 2021

Date: June 2022
Scale 1:30,000 (approx.) at A4 Size

Byron Bay Main Beach (Map 7)

Dogs are prohibited at all times on Byron Bay Main Beach from the rock wall opposite Jonson Street carpark to the boundary of Cape Byron State Conservation Area (including Clarkes Beach).

Dogs are prohibited in Cape Byron State Conservation Area and Arakwal National Park.



Aerial photo sourced from Landchecker
Aerial photo taken August 2021

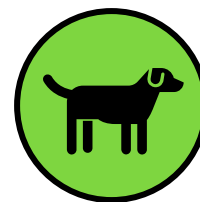
Date: June 2022
Scale 1:10,000 (approx.) at A4 Size

Belongil Beach South (Map 8)

Belongil Beach South off-lead dog exercise area is designated from a point adjacent to Manfred Street, Belongil, extending in a south-easterly direction to a point on the western side of Main Beach car park.

Dogs are permitted in the inter-tidal zone only. Dog owners must keep their dogs off dune and dune rehabilitation areas.

Dogs are prohibited in Cumbebin Swamp Nature Reserve.



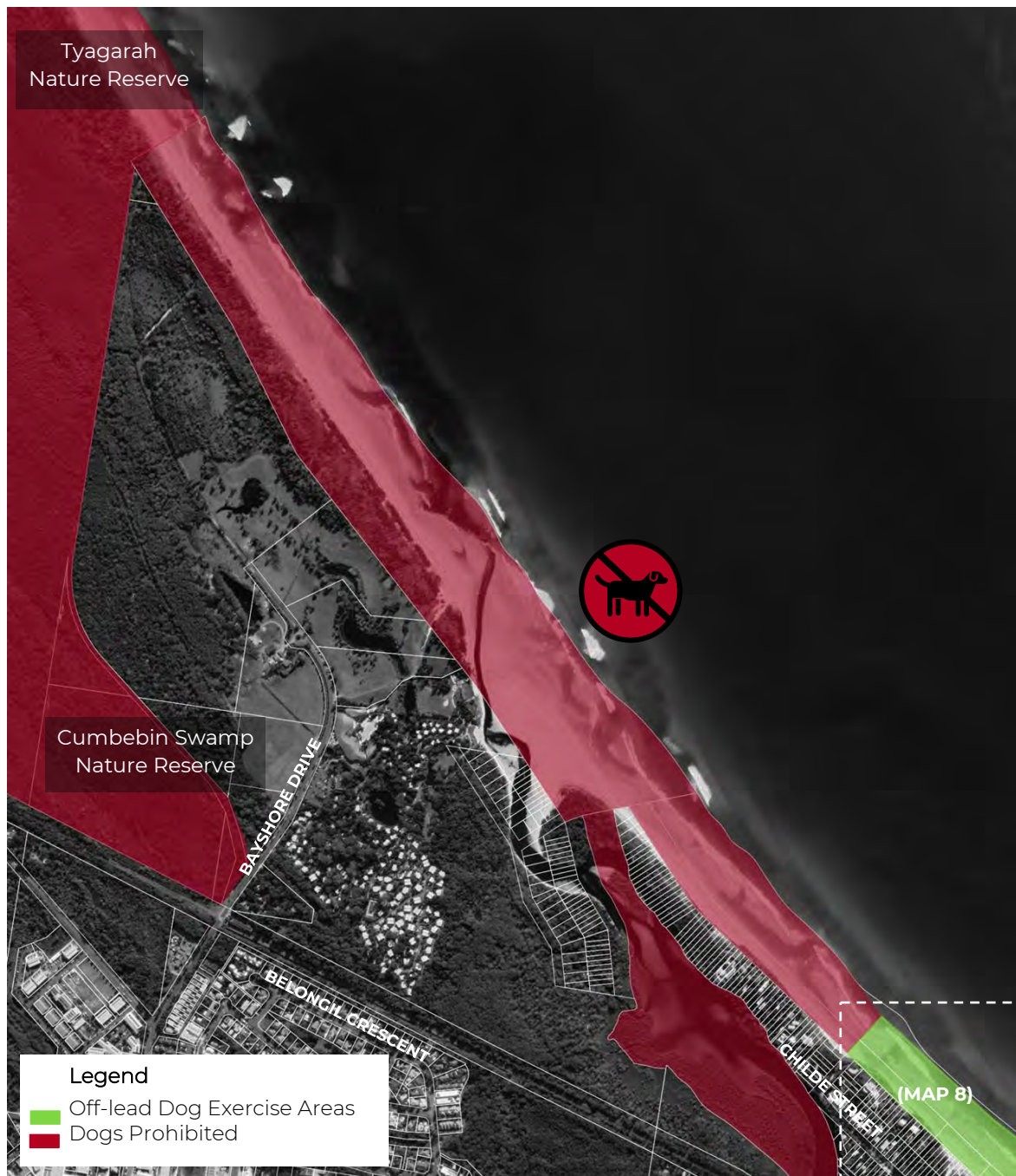
Aerial photo sourced from Landchecker
Aerial photo taken August 2021

Date: June 2022
Scale 1:10,000 (approx.) at A4 Size

Belongil Beach North (Map 9)

Dogs are prohibited at all times on Belongil Beach North from a point adjacent to Manfred Street, Belongil extending north to Tyagarah Nature Reserve.

Dogs are prohibited in Tyagarah Nature Reserve.



Aerial photo sourced from Landchecker
Aerial photo taken August 2021

Date: June 2022
Scale 1:20,000 (approx.) at A4 Size

Byron Bay Memorial and Recreation Grounds (Map 10)

Dogs are prohibited at all times on the playing fields at Byron Bay Memorial and Recreation Grounds

This includes the two football fields, netball courts, tennis courts, croquet courts, cricket field, rugby field and practice wickets.



Aerial photo sourced from Landchecker
Aerial photo taken August 2021

Date: June 2022
Scale 1:2,500 (approx.) at A4 Size

Cavanbah Centre (Map 11)

Dogs are prohibited at all times in all locations at the Cavanbah Centre.

This includes the five outdoor sports fields, three outdoor multi-purpose hard courts, indoor sports centre, function rooms and carpark.



Aerial photo sourced from Landchecker
Aerial photo taken August 2021

Date: June 2022
Scale 1:5,000 (approx.) at A4 Size

Lilli Pilli Estate, Byron Bay (Map 12)

Under the Byron Shire *Local Orders for the Keeping of Animals 2021*, the taking of dogs (on-lead or not) into public places within Lilli Pilli Estate is prohibited.

The keeping of dogs on private properties within Lilli Pilli Estate is prohibited by restrictive covenants established at the time the estate was developed and approved.



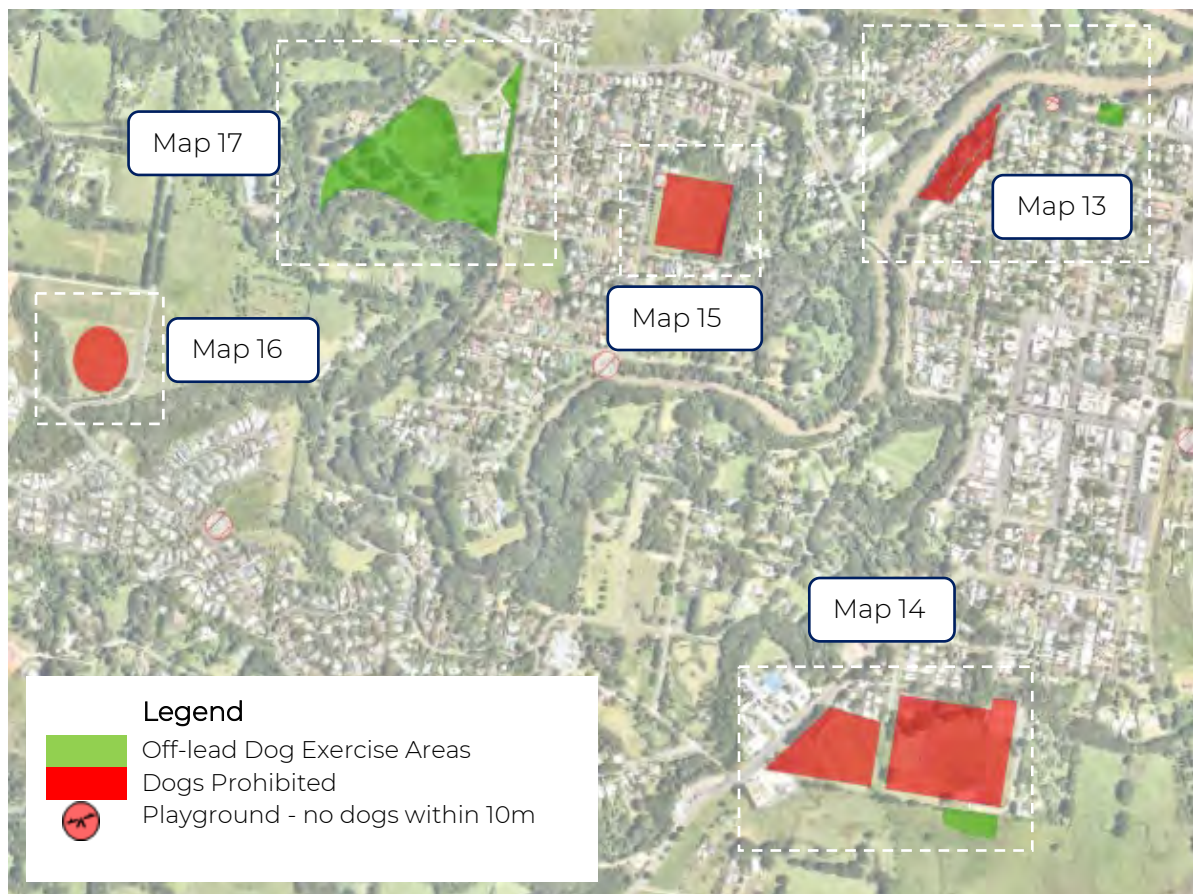
Aerial photo sourced from Landchecker
Aerial photo taken August 2021

Date: June 2022
Scale 1:5,000 (approx.) at A4 Size

Mullumbimby

The following dog areas are applicable in Mullumbimby:

- Map 13 – Heritage Park
- Map 14 – Mullumbimby Recreation Ground and Dog Park
- Map 15 – Pine Avenue Sport Fields
- Map 16 – Plover Park
- Map 17 – Mullumbimby Showground



Aerial photo sourced from Geocortex
Scale 1:15,000 (approx.) at A4 Size

Date: March 2025

Heritage Park (Map 13)

Mullumbimby off-lead dog exercise area is designated from opposite Gordon Street to opposite Stuart Street at Heritage Park on Mill Street.

Dogs are prohibited to be within ten (10) metres of the children's play equipment and BBQ.

Dogs are prohibited in the area of the Maslen Arboretum, except when walking on the pathway on a lead.



Aerial photo sourced from Geocortex
Scale 1:15,000 (approx.) at A4 Size

Date: March 2025

Mullumbimby Recreation Ground and Dog Park (Map 14)

Dogs are prohibited at all times on the playing field at Mullumbimby Recreation Ground.

This includes the cricket oval, western field, skatepark, netball courts and grassed athletics track.

Mullumbimby off-lead dog exercise park is designated at 152 Stuart Street.



Aerial photo sourced from Geocortex
GIS Mapping
Date: March 2024 Scale: 1:5,000

Pine Avenue Sports Fields (Map 15)

Dogs are prohibited at all times on all playing fields at Pine Avenue Sports Fields.

This includes the two full-sized soccer fields and junior field.



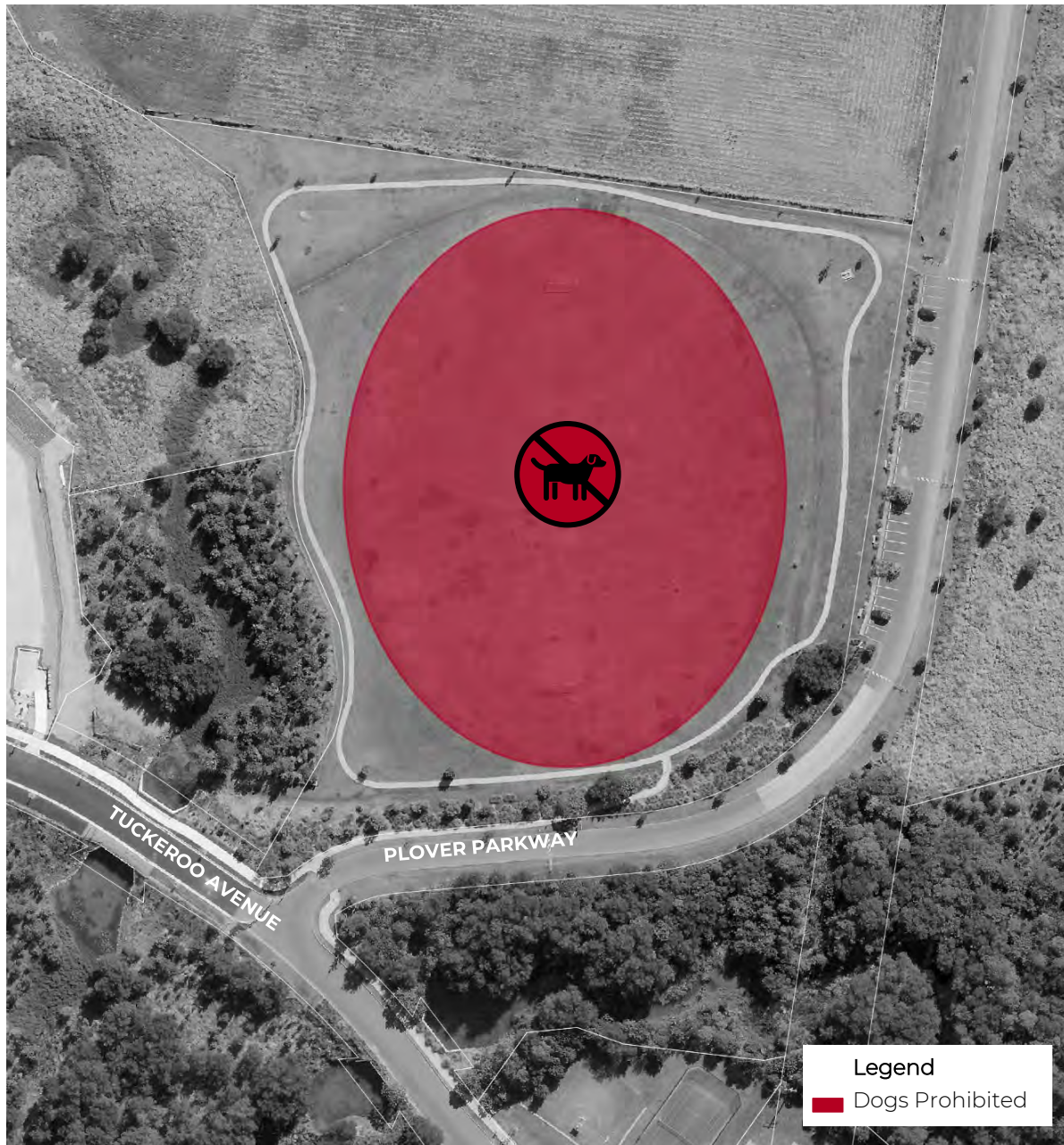
Aerial photo sourced from Landchecker
Aerial photo taken August 2021

Date: June 2022
Scale 1:2,500 (approx.) at A4 Size

Plover Park (Map 16)

Dogs are prohibited at all times on the cricket oval at Plover Park.

Dogs are permitted on-lead on the perimeter path.



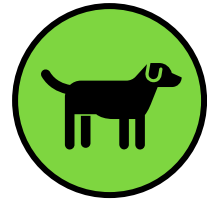
Aerial photo sourced from Landchecker
Aerial photo taken August 2021

Date: June 2022
Scale 1:2,500 (approx.) at A4 Size

Mullumbimby Showground (Map 17)

Dogs are permitted off-lead at Mullumbimby Showground.

Mullumbimby Showground is not managed or owned by Byron Shire Council and is managed by Mullumbimby Showground Trust.



Aerial photo sourced from Landchecker
Aerial photo taken August 2021

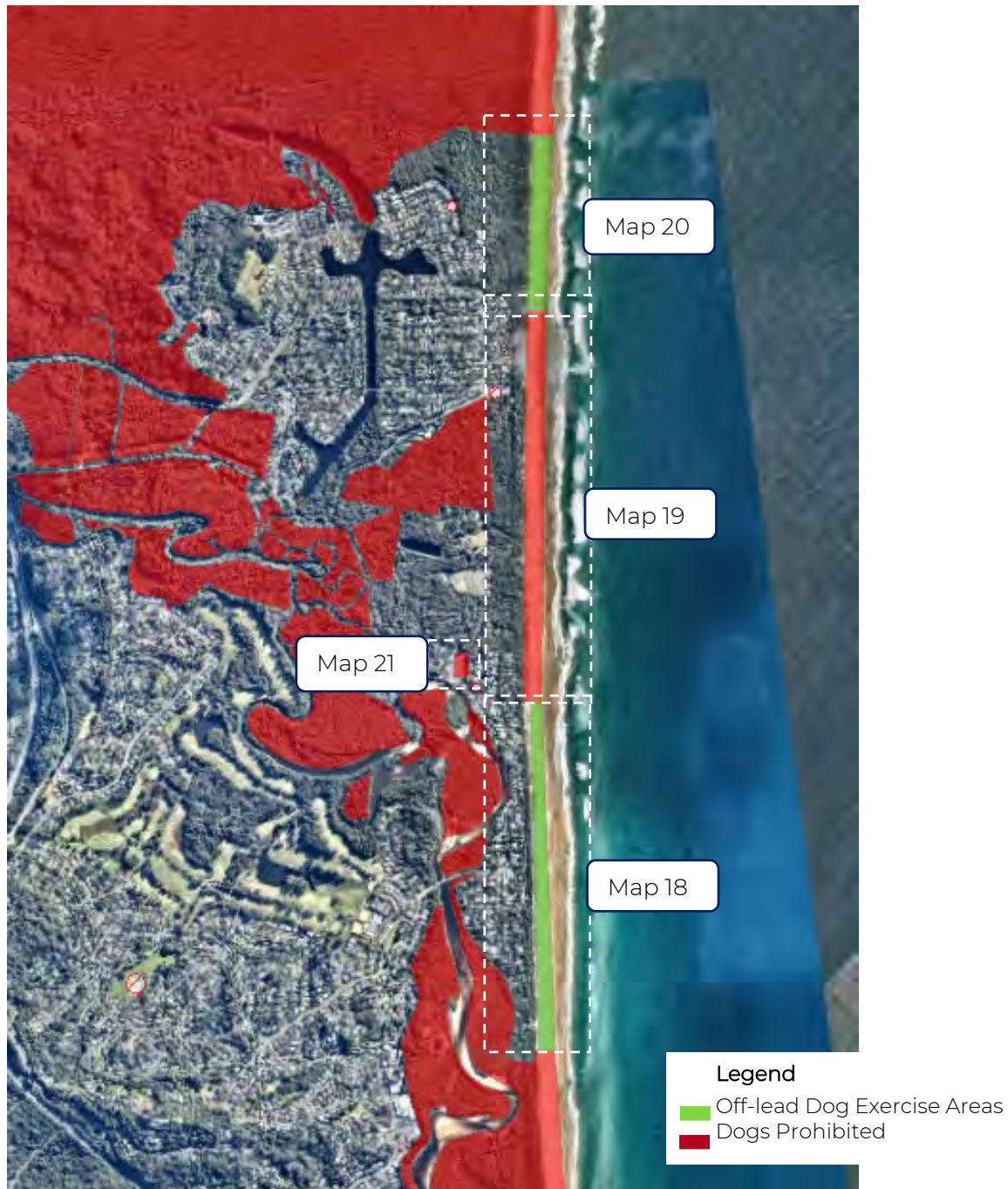
Date: June 2022
Scale 1:10,000 (approx.) at A4 Size

New Brighton & South Golden Beach

The following dog areas are applicable in New Brighton & South Golden Beach:

- Map 18 – New Brighton Beach
- Map 19 – New Brighton to South Golden Beach
- Map 20 – South Golden Beach
- Map 21 – Tom Kendall Sports Field

Dogs are prohibited in Billinudgel Nature Reserve, Marshalls Creek Nature Reserve and Brunswick Heads Nature Reserve.



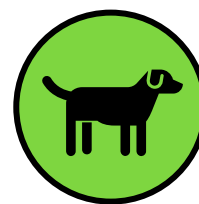
Aerial photo sourced from Geocortex
Scale 1:30,000 (approx.) at A4 Size

Date: September 2022

New Brighton Beach (Map 18)

New Brighton Beach off-lead dog exercise area extends from a point 50m north of the Brunswick Heads Nature Reserve boundary and extending northward to a line adjacent to Ocean Avenue. Dogs are permitted in the inter-tidal zone only. Dog owners must keep their dogs off dune and dune rehabilitation areas.

Dogs are prohibited in Marshalls Creek Nature Reserve and Brunswick Heads Nature Reserve.



Aerial photo sourced from Landchecker
Aerial photo taken August 2021

Date: June 2022
Scale 1:15,000 (approx.) at A4 Size

New Brighton Beach to South Golden Beach (Map 19)

Dogs are prohibited at all times between South Golden Beach off-lead dog exercise area from a point adjacent to Gloria Street to New Brighton Beach off-lead dog exercise area from a point adjacent to Ocean Avenue.

Dogs are prohibited in Marshalls Creek Nature Reserve.



Aerial photo
sourced from
Landchecker

Date: June 2022

Aerial photo taken
August 2021

Scale 1:15,000
(approx.) at A4 Size

South Golden Beach (Map 20)

South Golden Beach off-lead dog exercise area extends from a point adjacent to Gloria Street, South Golden Beach, extending in a northerly direction to the Billinudgel Nature Reserve. Dogs are permitted in the inter-tidal zone only. Dog owners must keep their dogs off dune and dune rehabilitation areas.



Dogs are prohibited in Billinudgel Nature Reserve.



Aerial photo sourced from Landchecker
Aerial photo taken August 2021

Date: June 2022
Scale 1:2,500 (approx.) at A4 Size

[Toon Kendaal Sports Field \(Map 21\)](#)

Dogs are prohibited at all times on the soccer field at Tom Kendall Sports Field.

Dogs are prohibited in Marshalls Creek Nature Reserve.



Aerial photo sourced from Landchecker
Aerial photo taken August 2021

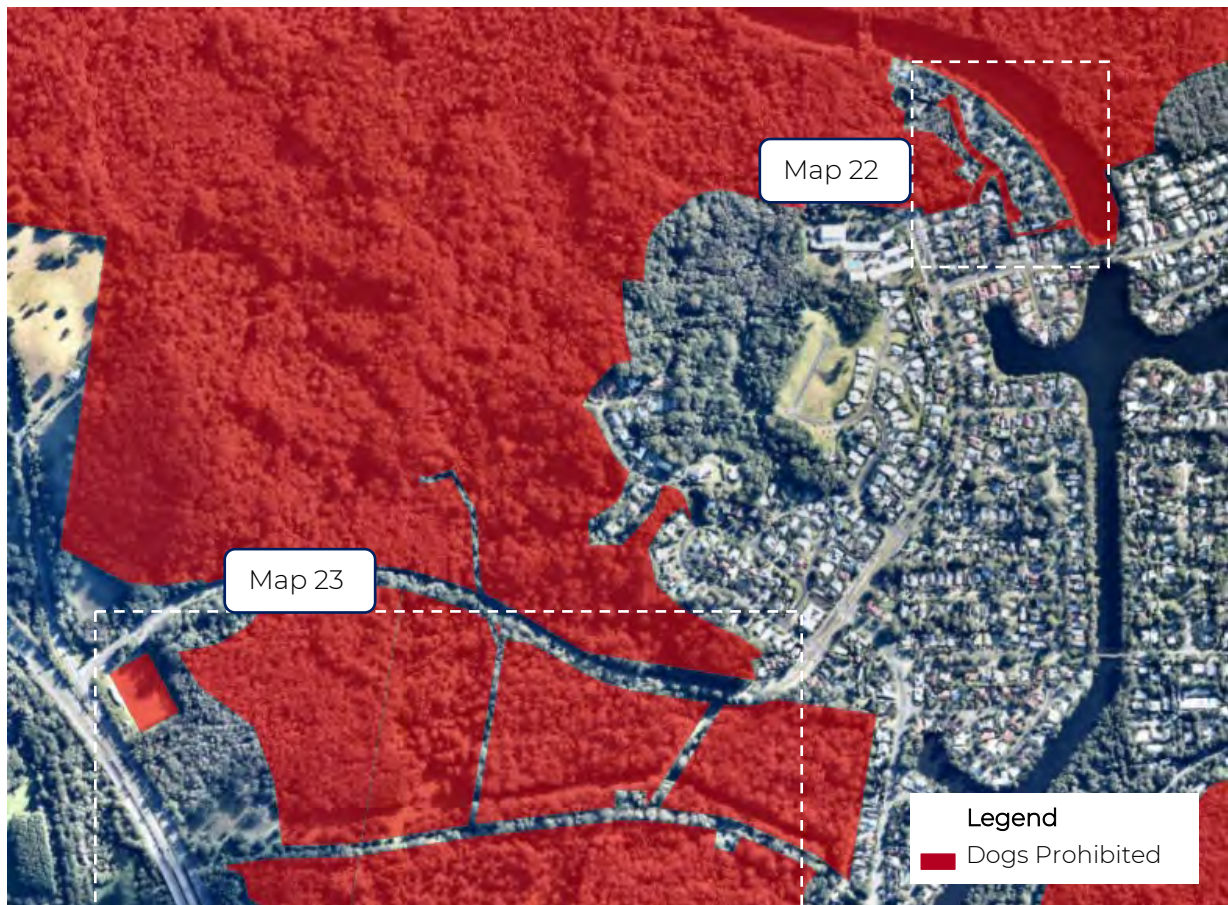
Date: June 2022
Scale 1:2,500 (approx.) at A4 Size

Ocean Shores

The following dog areas are applicable in Ocean Shores:

- o Map 22 – Hardy Avenue
- o Map 23 – Bob Belleair Sports Field

Dogs are prohibited in Billinudgel Nature Reserve and Marshalls Creek Nature Reserve.



Aerial photo sourced from Geocortex
Scale 1:10,000 (approx.) at A4 Size

Date: September 2024

Hardy Avenue (Map 22)

Under the Byron Shire *Local Orders for the Keeping of Animals* 2021, the taking of dogs (on lead or not) into public places within Hardy Avenue is prohibited.



The keeping of dogs on private properties within this Tread Lightly Estate is prohibited by restrictive covenants established at the time the estate was developed and approved.

Dogs are prohibited in Billinudgel Nature Reserve.



Aerial photo sourced from Geocortex
Scale 1:2500 at A4 Size

Date: September 2024

Legend

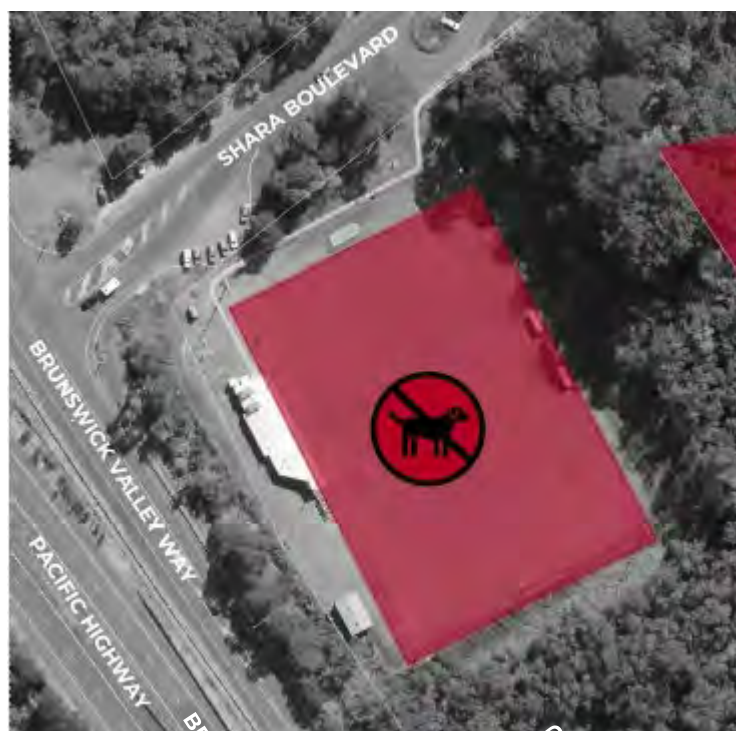
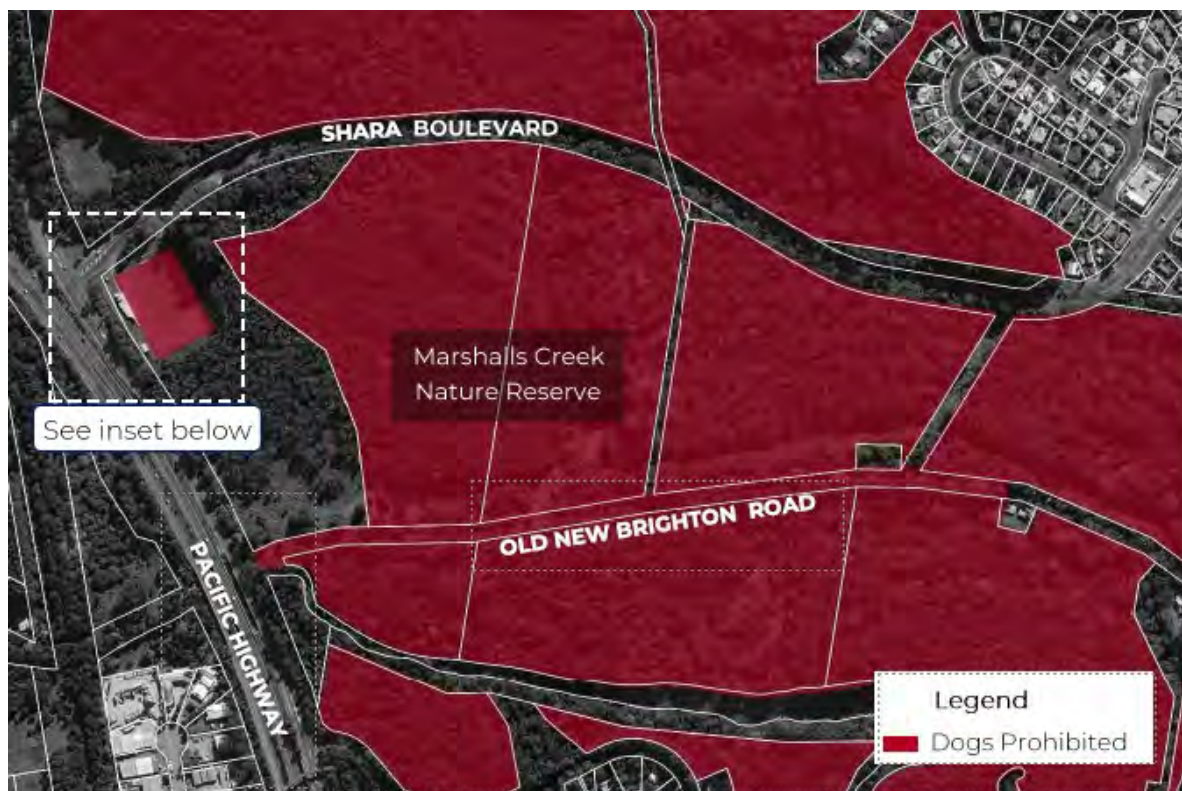
 Dogs Prohibited

Bob Bellear Sports Field (Map 23)

Dogs are prohibited at all times on the playing field at Bob Bellear Sports Field.

Dogs are permitted on-lead along the northern footpath to the clubhouse.

Dogs are prohibited in Marshalls Creek Nature Reserve.



Aerial photo sourced from Landchecker

Aerial photo taken August 2021

Date: August 2023

Scale 1:8,500 (approx. at 44 size)

Inset: Bob Bellear Sports Field

Suffolk Park

The following dog areas are applicable in Suffolk Park:

- Map 24 – Tallow Beach
- Map 25 – Beech Drive Lake Park
- Map 26 – Linda Vidler Sports Fields

Dogs are prohibited in Arakwal National Park, Ti-Tree Lake Aboriginal Area and Broken Head Nature Reserve.



Aerial photo sourced from Landchecker
Aerial photo taken August 2021

Date: June 2022
Scale 1:40,000 (approx.) at A4 Size

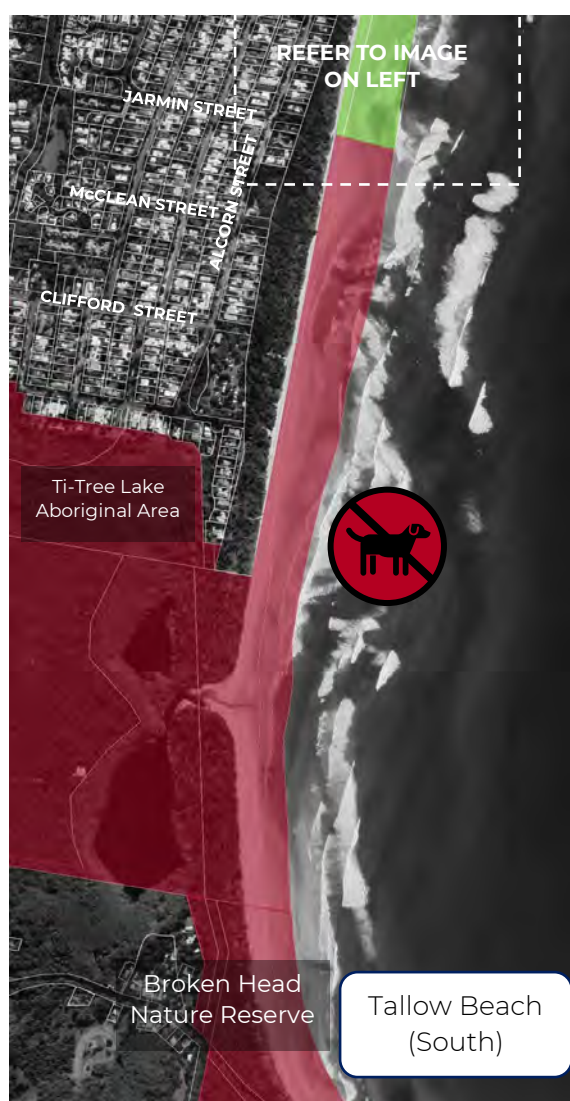
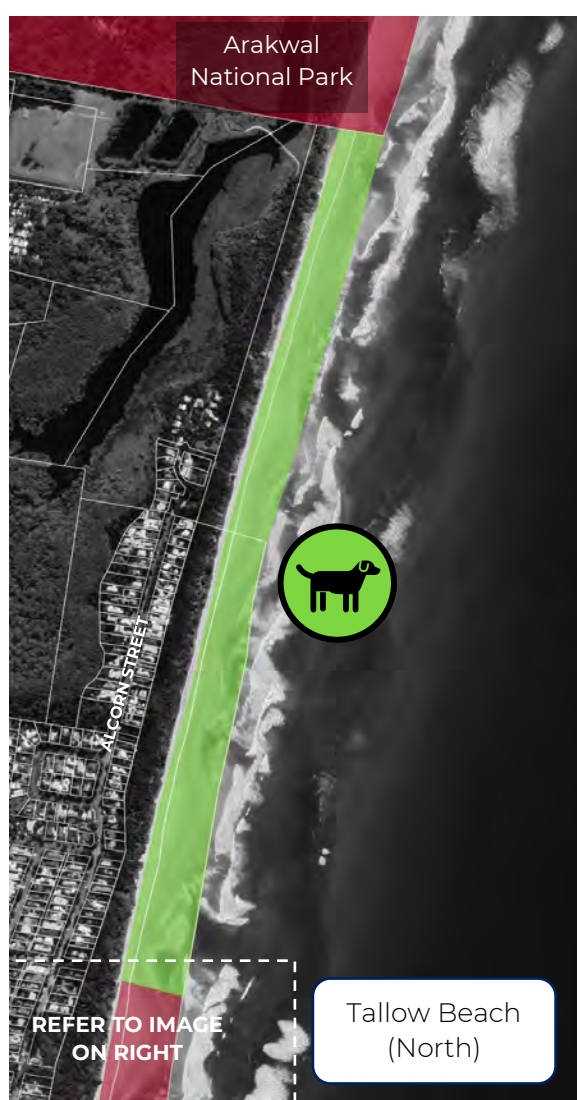
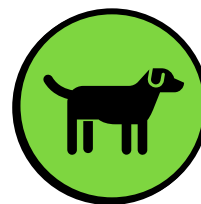
Tallow Beach (Map 24)

Suffolk Park (Tallow Beach) off-lead dog exercise area is designated from a point adjacent to Jarman Street, Suffolk Park, extending in a northerly direction to the boundary of the Arakwal National Park. Refer to image on left.

Dogs are permitted in the inter-tidal zone only. Dog owners must keep their dogs off dune and dune rehabilitation areas.

Dogs are prohibited at all times south of Jarman Street beach access point to Broken Head Nature Reserve boundary. Refer to image on right.

Dogs are prohibited in Arakwal National Park and Broken Head Nature Reserve.



Aerial photo sourced from Landchecker
Date: June 2022
Aerial photo taken August 2021
Scale 1:15,000 (approx.) at A4 Size

Legend

- Off-lead Dog Exercise Areas
- Dogs Prohibited

Beech Drive Lake Park off-lead dog exercise area is designated at Beech Drive public reserve in Suffolk Park.



Aerial photo sourced from Landchecker
Aerial photo taken August 2021

Date: June 2022
Scale 1:7,500 (approx.) at A4 Size

Linda Vidler Sports Field (Map 26)

Dogs are prohibited at all times on the football field at Linda Vidler Sports Field in Suffolk Park.



Aerial photo sourced from Landchecker
Aerial photo taken August 2021

Date: June 2022
Scale 1:2,500 (approx.) at A4 Size

Useful contacts

Contact	Details
Byron Shire Council	<p>Phone: 02 6626 7000</p> <p>Email: council@byron.nsw.gov.au</p> <p>Address: 70 Station Street, Mullumbimby NSW</p> <p>This guide shows areas that Council and National Parks & Wildlife Service rangers can enforce under the <i>Companion Animals Act 1998</i> and <i>National Parks and Wildlife Act 1974</i> respectively. It is reviewed and amended regularly.</p> <p>Please check the Byron Shire Council's website for up to date info:</p> <p>Website: https://www.byron.nsw.gov.au/Home</p>
Byron Animal Shelter and Pound	<p>Phone: 02 6626 7000</p> <p>Email: pes@byron.nsw.gov.au</p>
Byron Visitors Centre	<p>Phone: 02 6680 8558</p> <p>Website: https://www.visitbyronbay.com/</p> <p>Address: Old Stationmaster's Cottage, 80 Jonson Street, Byron Bay</p>
Companion Animals Act 1998	<p>Website: https://legislation.nsw.gov.au/view/whole/html/inforce/current/act-1998-087</p>
National Parks and Wildlife Service	<p>Phone: 02 6639 8300 (business hours) or 02 8579 0801 (after hours)</p> <p>Email: npws.tweedbyron@environment.nsw.gov.au</p> <p>Address: 22 Tallow Beach Road, Byron Bay</p> <p>Website: https://www.nationalparks.nsw.gov.au/</p>
NSW Pet Registry	<p>Website: https://www.petregistry.nsw.gov.au/#/</p>
RSPCA	<p>Phone: 1300 278 3589 or 1300 cruelty</p>
WIRES	<p>Phone: 1300 094 737</p> <p>Website: https://www.wires.org.au/</p>