

**Item name:** Commercial Building and Flats**Location:** 26 Mullumbimbi Street Brunswick Heads 2483

Byron

**Address:** 26 Mullumbimbi Street**Planning:** Northern**Suburb/nearest town:** Brunswick Heads 2483**Local govt area:** Byron**Parish:****State:** NSW**County:****Other/former names:** Twohill Building, Cafe- Coffee Lounge**Area/group/complex:****Group ID:****Aboriginal area:****Curtilage/boundary:** The property boundary.**Item type:** Built**Group:** Commercial**Category:** Shop**Owner:** Private - Individual**Admin codes:****Code 2:****Code 3:****Current use:** Shops/Restaurants and residential above.**Former uses:** Shops and residential above.**Assessed significance:** Local**Endorsed significance:** Local

**Statement of significance:** The building (1951) demonstrates confidence in the development of the township during the the post war era and displays elements of the design style elements which are contributory to the assessed aesthetic significance of the township. The building with its two storey banded brick parapet and suspended awning contributes to the streetscape in the context of the nearby Hotel Brunswick (1941), the adjoining brick pharmacy and flats at 14 Mullumbimbi Street (1948), and Gibson's shops and flats at 28 Mullumbimbi St (1951), which form a mid-20th century commercial precinct opposite the public reserve of Banner Park. The upper floor remains quite intact to original details with original windows and unpainted brickwork although there have been changes to the changes shopfronts on the lower level.

**Item name:** Commercial Building and Flats

**Location:** 26 Mullumbimbi Street Brunswick Heads 2483

Byron

**Historical notes** Background

**of provenance:** The Bundjalung people were the original inhabitants of the Brunswick Heads area prior to European settlement. Brunswick Heads is an acknowledged place of significance for the Aboriginal people and was a meeting place with good fish and shellfish food sources, for ceremonial and trade purposes. Brunswick Heads is the oldest European settlement, and one of the earliest ports in the area of Byron Shire. In 1840, Robert Dixon, Surveyor, and his party carried out a survey from Southport, Qld, to the north head of the Richmond River. Their arrival and camp at the Brunswick River was documented on 23 June 1840. Cedar cutting was a major economic activity in force during the 1840s and the first cedar camp in the Byron Shire area was established on the Brunswick River in 1849. The 'surfing technique' for directly loading cedar onto ships anchored offshore was introduced about the mid-1860s. Logs were floated out through the mouth of the river, either singly or in rafts, and either towed to awaiting ships or winched from the ship. Commodities of timber, tallow and whale oil were shipped to Sydney and beyond.

The early settlers of Brunswick included Robert Marshall, the Reddacliff family and William Law. The settlement gradually developed, and on 20 March 1885, the village of Brunswick was officially proclaimed. Dairying was an important early economic activity to settlers in the area. It was reported in 1885 that there was one hotel, two stores, the ferryman's residence, and the post and telegraph office. A court house and police station were under construction and a government school followed in 1888. Anticipation of connection to the railway line encouraged further growth until the route changed and line was built through Mullumbimby in 1894. This caused the demise of the township. The school closed in 1896, the Ocean View Hotel in 1897, and the Court House was relocated to Mullumbimby in 1898. It was not long however, until the town recovered, and in 1903 the school re-opened. The town evolved as a seaside resort, and the historic theme of leisure and tourism is evident to this day. The Ocean View Hotel reopened in 1902 and was expanded in 1908.

The reserve was officially designated for public recreation in 1917 during WW1 reflecting the importance of the reserves to the town. This is reinforced in several newspaper articles of the time which outline local community opposition to the sale of land and lobbying of state government to retaining it for public use. An article on Greek migrant history in Brunswick Heads states that; 'Into the war (WW1) the Progress Association was instrumental in preserving crown foreshore land for public recreation and in pushing tourism ahead of commercial fishing when they had all netting banned in the river, providing stocks for the holidaying line fishermen. The introduction of the motor car in the 1920s brought a boost to tourism and according to an article in the Mullumbimby Star 6 January 1927; 'It was estimated that between 30-35,000 people visited the place between Christmas 1926 and New Year 1927.' The major industries during the 1920s were fishing, tourism and the dairy industry which was serviced by river

transport. Further settlement of Brunswick Heads occurred at a modest rate influenced by the fact that the town was isolated by flooding, and constrained by wetlands. The Pacific Highway was routed through the town for more than 50 years, then bypassed the town, and in recent decades, the highway upgrades have made the town even more accessible to a growing population in SE Queensland and the wider region. The Brunswick Valley Historical Society (BVHS) holds many historic photographs of Brunswick Heads including those in the reference publications.

**This Item**

This brick building erected in 1950/completed 1951 stands on the site of the former Brunswick Heads Café which was opened as a classic Greek Oyster Saloon by George Patrinos 1909. It was in the hands of the Reynolds family when acquired by Bob Miller in 1923. He had expanded the Café into a General Store by the time he passed the place to the Lofts family in 1928. The Lofts turned The Brunswick Café into the social hub of the village, progressive upgrades also introducing a dance floor. It grew into the biggest and most popular in town and in early 1947 was the first café in the Tweed-Brunswick district to be granted a liquor licence. The Lofts built the prominent Art Deco Seabreeze Flats next door in 1948 and passed the Brunswick Café to the Twohill family. Next door, the first Chemist in the Seabreeze building (aka 'Lofts' Flats') was Peter Harding Dec48/Jan49. He passed the place to Ray Phippard late 1951/early 1952. At the time Bede Donlon took over in ~1953 the pharmacy occupied half the ground floor frontage, a Devonshire Tea House occupying the other shop front with entrance on the left, operated by Mrs 'Ma' Lofts.)

Mrs Rita Twohill had taken command of Mrs M.A. Lofts low rise timber Brunswick Café building -the former

**Item name:** Commercial Building and Flats

**Location:** 26 Mullumbimbi Street Brunswick Heads 2483

Byron

building on this site at 26 Mullumbimbi Street), in Nov1947, but the place was still occasionally known as Lofts Café until late 1949. IN 1950/51 this building was replaced by the current brick Twohill Building which was completed in early 1951.

On 8 Sep 1950 the Northern Star recorded that the Byron Shire approved the conversion into flats of a building in Mullumbimbi Street, Brunswick Heads, by J.F. Twohill, at a cost of £3500..., possibly supplementary to earlier work approved May1950.

Acknowledgment - BVHS.

**Themes:** National theme

3. Economy

3. Economy

State theme

Commerce

Commerce

Local theme

**Designer:**

**Builder:**

**Year started:** 1951

**Year completed:**

**Circa:** Yes

**Physical description:** This two storey building features contrasting banded brick work detailing on the parapet and a suspended awning. There are three shopfronts at ground level. The front facade has three vertically proportioned windows at the upper level, two of which are original double hung timber sash windows with horizontal glazing bars, typical of the era. The westernmost window has been replaced in aluminium. An original window on eastern face is also visible from streetscape. Power connection is attached on front facade. It retains its suspended awning. Shopfronts modified.

Starfish Fish and Chips. Modified with painted brickwork, mosaic pebbled step and a roller shutter door. Signage fascia has been increased in height compared to the original height of fascia

Cadeau- original awning height maintained. Modern entry

Sticky fingers modern folding timber plain glazed doors.

**Physical condition** Good

**level:**

**Physical condition:**

**Archaeological**

**potential level:**

**Archaeological**

**potential Detail:**

**Modification dates:** Shopfronts have been altered from original but upper floor is outwardly intact to original details. Awning lining has been replaced in corrugated metal and may have previously been fibrous cement sheet with batten trim.

**Recommended management:** Conserve all original elements of the building in accordance with heritage conservation principles . Maintain the brickwork unpainted. Reinststate a matching timber window to the third opening on the facade. Consider reinstatement of shopfront glazing to original details combined with accessibility. Lower height of signage on fascia for eastern most shop to retain the original proportions of fascia.

**Management:** Management category

Management name

**Further comments:** Reconstruction of the shopfronts glazing door details to original details is strongly encouraged subject to provision for accessibility considerations.

Restoration of the traditional narrow awning fascia would be appropriate to original proportions and details.

Remove paint from brickwork at lower level.

**Criteria a):** 26 Mullumbimbi Street is historically significant demonstrating the confidence in the growth of Brunswick Heads during the post war era and its growth for commerce and tourism.

**[Historical significance]**

**Item name:** Commercial Building and Flats

**Location:** 26 Mullumbimbi Street Brunswick Heads 2483

Byron

**Criteria b):** The building holds historical associative significance with J.F.Twohill and family.  
[Historical association significance]

**Criteria c):** The building is aesthetically significant for its form and detailing with its original brick parapet and banded detailing, original window openings and timber framed windows. The suspended awning is also stylistically appropriate to its period. The building sits as part of a group of similar era buildings on this streetscape fronting Banner Park and has high visibility with views and vistas of other important elements of Brunswick Heads.  
[Aesthetic/Technical significance]

**Criteria d):** The buildings would hold social significance with generations of families and holiday makers who have visited this commercial area opposite the reserve for decades.  
[Social/Cultural significance]

**Criteria e):**  
[Research significance]

**Criteria f):** The building forms part of a group of brick buildings of this mid century era facing the reserve which are rare locally.  
[Rarity]

**Criteria g):** The building is representative of buildings of the late 1940s and early 1950s era.  
[Representative]

**Intactness/Integrity:** Moderate

References:	Author	Title	Year
	Brunswick Valley Historical Society	Brunswick Heads In Focus 1885-2015	2015
	Jim Brokenshire	The Brunswick- Another River and its People. 1988. ISBN 0 71	1988
		Pers Comm and historical information Susan Tsicalas Brunswick	2022

Studies:	Author	Title	Number	Year
	Donald Ellsmore and Ian	Byron Shire Community Based Heritage Study		2005
	Clarence Heritage	Historic Heritage Assessment Brunswick Heads		2021

Parcels:	Parcel code	Lot number	Section number	Plan code	Plan number
	LOT	1		DP	371258

**Latitude:**

**Longitude:**

**Location validity:**

**Spatial accuracy:**

**Map name:**

**Map scale:**

**AMG zone:**

**Easting:**

**Northing:**

**Listing: Name**

**Title**

**Number**

**ListingDate**

Within a conservation area on an LEP  
Potential Heritage Item

**Data entry:** Data first entered: 21/02/2022

Data updated: 01/03/2022

Status: Completed

**Item name:** Commercial Building and Flats

**Location:** 26 Mullumbimbi Street Brunswick Heads 2483

Byron

**Image:**



**Caption:** 1950s streetscape of three brick buildings.

**Copy right:**

**Image by:** Brunswick Valley Historical Society

**Image date:**

**Image number:**

**Image url:** <http://www.environment.nsw.gov.au/maritimeheritageapp/resources/Heritage/shi/WebAPP/345c3a229af1d77495384276b68afb8b482.png>

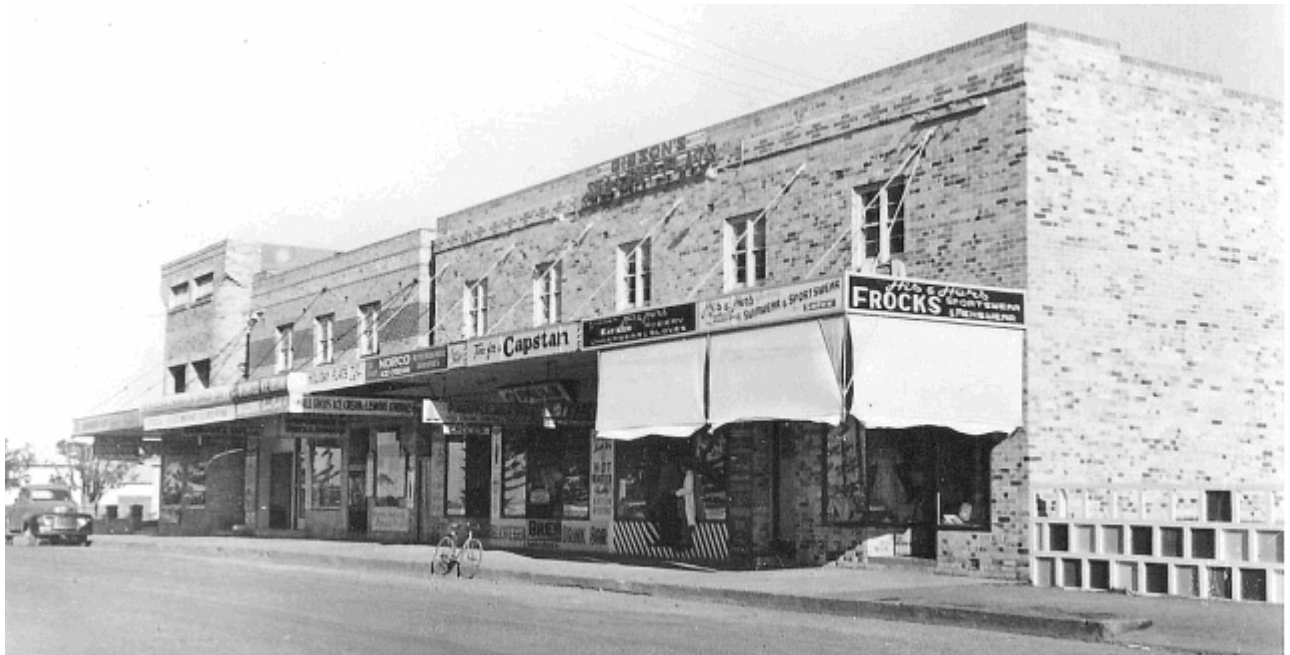
**Thumbnail url:** [http://www.environment.nsw.gov.au/maritimeheritageapp/resources/Heritage/shi/WebAPP/Thumb\\_test345c3a229af1d77495384276b68afb8b482.png](http://www.environment.nsw.gov.au/maritimeheritageapp/resources/Heritage/shi/WebAPP/Thumb_test345c3a229af1d77495384276b68afb8b482.png)

**Image:**

**Item name:** Commercial Building and Flats

**Location:** 26 Mullumbimbi Street Brunswick Heads 2483

Byron



**Caption:** Historic Image circa 1954

**Copy right:**

**Image by:** Brunswick Valley Historical Society

**Image date:**

**Image number:**

**Image url:** <http://www.environment.nsw.gov.au/maritimeheritageapp/resources/Heritage/shi/WebAPP/34540d429a2962e4209a9f4101d8ec2cd52.png>

**Thumbnail url:** [http://www.environment.nsw.gov.au/maritimeheritageapp/resources/Heritage/shi/WebAPP/Tumb\\_test34540d429a2962e4209a9f4101d8ec2cd52.png](http://www.environment.nsw.gov.au/maritimeheritageapp/resources/Heritage/shi/WebAPP/Tumb_test34540d429a2962e4209a9f4101d8ec2cd52.png)

**Image:**

**Item name:** Commercial Building and Flats

**Location:** 26 Mullumbimbi Street Brunswick Heads 2483

Byron



**Caption:** c2004 Heritage Study Photograph

**Copy right:** BSC

**Image by:** BSC

**Image date:**

**Image number:**

**Image url:** <http://www.environment.nsw.gov.au/maritimeheritageapp/resources/Heritage/shi/WebAPP/345a70c7035c41f4fcf95ae088f28b8b1e2.jpg>

**Thumbnail url:** [http://www.environment.nsw.gov.au/maritimeheritageapp/resources/Heritage/shi/WebAPP/Tumb\\_test345a70c7035c41f4fcf95ae088f28b8b1e2.jpg](http://www.environment.nsw.gov.au/maritimeheritageapp/resources/Heritage/shi/WebAPP/Tumb_test345a70c7035c41f4fcf95ae088f28b8b1e2.jpg)

**Image:**

**Item name:** Commercial Building and Flats

**Location:** 26 Mullumbimbi Street Brunswick Heads 2483

Byron



**Caption:** Current exterior

**Copy right:**

**Image by:** D. Wray

**Image date:** 26/07/2021

**Image number:**

**Image url:** <http://www.environment.nsw.gov.au/maritimeheritageapp/resources/Heritage/shi/WebAPP/345ca625e03ee414c53812c9c853ee16159.jpg>

**Thumbnail url:** [http://www.environment.nsw.gov.au/maritimeheritageapp/resources/Heritage/shi/WebAPP/Tumb\\_test345ca625e03ee414c53812c9c853ee16159.jpg](http://www.environment.nsw.gov.au/maritimeheritageapp/resources/Heritage/shi/WebAPP/Tumb_test345ca625e03ee414c53812c9c853ee16159.jpg)

**Image:**



**Item name:** Commercial Building and Flats

**Location:** 26 Mullumbimbi Street Brunswick Heads 2483

Byron



**Caption:** Facade

**Copy right:**

**Image by:** D. Wray

**Image date:** 26/07/2021

**Image number:**

**Image url:** <http://www.environment.nsw.gov.au/maritimeheritageapp/resources/Heritage/shi/WebAPP/345dbd324d7acfd49b488ac136ea7f7cbfb.JPG>

**Thumbnail url:** [http://www.environment.nsw.gov.au/maritimeheritageapp/resources/Heritage/shi/WebAPP/T\\_humb\\_test345dbd324d7acfd49b488ac136ea7f7cbfb.JPG](http://www.environment.nsw.gov.au/maritimeheritageapp/resources/Heritage/shi/WebAPP/T_humb_test345dbd324d7acfd49b488ac136ea7f7cbfb.JPG)

**Image:**

**Item name:** Commercial Building and Flats

**Location:** 26 Mullumbimbi Street Brunswick Heads 2483

Byron



**Caption:** View from Park

**Copy right:**

**Image by:** D. Wray

**Image date:** 26/07/2021

**Image number:**

**Image url:** <http://www.environment.nsw.gov.au/maritimeheritageapp/resources/Heritage/shi/WebAPP/34579c6cbe8608044cb97744f717b2a5375.jpg>

**Thumbnail url:** [http://www.environment.nsw.gov.au/maritimeheritageapp/resources/Heritage/shi/WebAPP/Tumb\\_test34579c6cbe8608044cb97744f717b2a5375.jpg](http://www.environment.nsw.gov.au/maritimeheritageapp/resources/Heritage/shi/WebAPP/Tumb_test34579c6cbe8608044cb97744f717b2a5375.jpg)