

Legend

• Pedestrian crossing

New / upgraded crossing

Existing paths

Shared cycle path

Other

New / upgraded paths

Off-road separated cycle path

On-road separated cycle path

On-road cycle lane

Mixed traffic

Shared path

Land uses

Residential

Commercial

Environmental

Industrial

The map illustrates the proposed bicycle infrastructure for Brunswick Heads. Key features include:

- Highways:** Pacific Highway (top left), Tweed Street (center), and Old Pacific Highway (bottom center).
- Land Uses:** Residential (pink), Commercial (blue), Environmental (green), and Industrial (purple).
- Infrastructure:** New/upgraded crossings (black dots), existing paths (grey lines), and new/upgraded paths (orange lines).
- Path Types:** Off-road separated cycle path (thick orange line), On-road separated cycle path (thin orange line), On-road cycle lane (dashed orange line), Mixed traffic (dotted orange line), and Shared path (dash-dot orange line).

Bike Plan - Proposed Infrastructure
Brunswick Heads

Legend

•

Pedestrian crossing

New / upgraded crossing

Existing paths

Shared cycle path

Other

New / upgraded paths

Off-road separated cycle path

On-road separated cycle path

On-road cycle lane

Mixed traffic

Shared path

Land uses

Residential

Commercial

Environmental

Industrial

The map illustrates the proposed infrastructure for the Brunswick Heads Centre Bike Plan. It shows a network of streets and land uses. The streets are labeled: Mullumbimbi Street, Fingal Street, Booyun Street, Nana Street, Tweed Street, Park Street, Byron Street, and S Beach Road. The land uses are color-coded: Residential (light red), Commercial (light blue), Environmental (light green), and Industrial (light purple). The proposed infrastructure includes new/upgraded crossings (black dots), new/upgraded paths (orange lines), and existing paths (grey lines). The map also shows the coastline and a large body of water to the east.

Bike Plan - Proposed Infrastructure
Brunswick Heads Centre

Legend

Existing infrastructure

Pedestrian and cycle path

Pedestrian crossing

New / upgraded crossings

Priority A

Priority B

Priority C

New / upgraded paths

Priority A

Priority B

Priority C

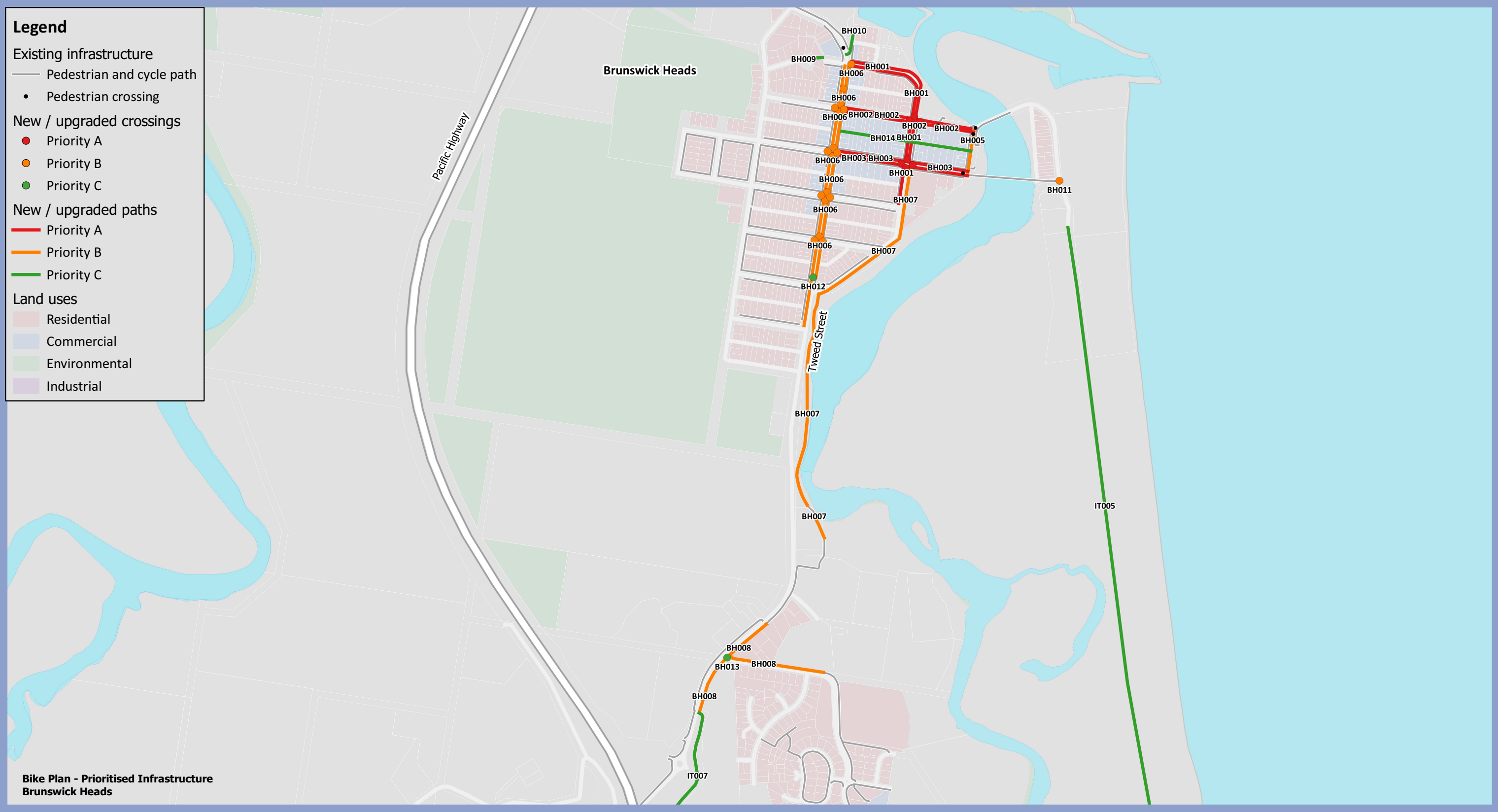
Land uses

Residential

Commercial

Environmental

Industrial



Legend

Existing infrastructure

Pedestrian and cycle path

Pedestrian crossing

New / upgraded crossings

Priority A

Priority B

Priority C

New / upgraded paths

Priority A

Priority B

Priority C

Land uses

Residential

Commercial

Environmental

Industrial



Works Package ID	Location	Description	Priority	Works in PAMP?	Estimated Cost
BH001	Brunswick Heads	Construct 320m of new off-road cycle path (one-way) on western side and 340m of new off-road cycle path (one-way) on eastern side of Park Street between Tweed Street and Mullumbimbi Street. Construct 240m of new on-road separated cycle path (one-way) on western side of Park Street between Mullumbimbi Street and Booyun Street and 120m of new on-road separated cycle path (one-way) on eastern side of Park Street between Mullumbimbi Street and Fingal Street. Upgrade existing crossings on the eastern and western legs of the Mullumbimbi Street/Park Street and Fingal Street/Park Street intersection	A	No	\$432,000
BH002	Brunswick Heads	Construct 390m of new on-road separated cycle path (one-way) on northern side and 400m of new on-road separated cycle path (one-way) on southern side of Mullumbimbi Street between Tweed Street and Brunswick Terrace. Construct new crossing on northern and upgrade existing crossing on southern leg of Park Street/Mullumbimbi Street intersection	A	No	\$266,400
BH003	Brunswick Heads	Construct 400m of new on-road separated cycle path (one-way) on northern side and 400m of new on-road separated cycle path (one-way) on southern side of Fingal Street between Tweed Street and Brunswick Terrace. Construct new crossings on northern and southern legs of Park Street/Fingal Street intersection	A	No	\$270,300
BH005	Brunswick Heads	Construct 135m of new mixed traffic (shared zone) on Brunswick Terrace between Mullumbimbi Street and Fingal Street	B	Yes	\$266,000
BH006	Brunswick Heads	Construct 800m of new on-road separated cycle path (one-way) on western side of Tweed Street between Fawcett Street and Teven Street and 650m of new on-road separated cycle path (one-way) on eastern side of Tweed Street between Fawcett Street and Short Street. Construct new crossings on each leg of the Tweed Street/Nana Street, Tweed Street/Booyun Street, Tweed Street/Fingal Street and Tweed Street/Mullumbimbi Street intersections. Upgrade existing crossing on eastern leg of Tweed Street/Fawcett Street intersection	B	No	\$705,600
BH007	Brunswick Heads	Construct 1,245m of new shared path on eastern and southern side of Park Street/The Terrace/Tweed Street/Old Pacific Highway south of Fingal Street	B	Yes	\$748,200
BH008	Brunswick Heads	Construct 150m of new shared path on eastern side of Old Pacific Highway north of Bayside Way. Construct 295m of new shared path on northern side of Bayside Way east of Old Pacific Highway. Construct 180m of new shared path on eastern side of Old Pacific Highway between Bayside Way and Eucalyptus Lane	B	Yes	\$372,000
BH009	Brunswick Heads	Upgrade 40m of existing footpath to shared path between Fawcett Street and Pandanus Court	C	Yes	\$20,000
BH010	Brunswick Heads	Construct 80m of mixed traffic (shared zone) on Tweed Street near caravan park	C	No	\$24,600
BH011	Brunswick Heads	Construct new crossing on South Beach Road east of Fingal Street pedestrian bridge	B	No	\$15,000
BH012	Brunswick Heads	Upgrade existing crossing on northern leg of Tweed Street/Short Street intersection	C	No	\$15,000

Works Package ID	Location	Description	Priority	Works in PAMP?	Estimated Cost
BH013	Brunswick Heads	Construct new crossing on eastern leg of Old Pacific Highway/Bayside Way intersection	C	No	\$30,000
BH014	Brunswick Heads	Construct 405m of new mixed traffic (shared zone) on Balun Lane between Tweed Street and Brunswick Terrace	C	Yes	\$810,000