



BYRON BAY SKATE + ACTIVITY SPACE

FINAL CONCEPT - FEBRUARY

BYRON SHIRE COUNCIL

CONVIC

2020 CONSULTATION FEEDBACK

OVERALL SPACE - KEY THEMES

In general there was much support for the Youth Space with many community members stating it was a much needed addition for youth in the area. Some key themes that developed from responses are highlighted below:

- There was concern around the location of the facility and its 'back of house' setting. Many comments mentioned the anti social behaviour in the area and highlighted that this must be considered within the development.
- Lights, Toilets and shade were a primary concern for many participants, there is a general feeling that within the summer months there is not enough shaded activation for youth to get outdoors.
- There was much support for other forms of active recreation within the space; some key items included bouldering, ping pong, parkour, performance and art and dog walking.
- There was much support for other forms of passive recreation within the space; some key items included pedestrian pathways, shaded green space, spectator provision including grandstand space, BBQ areas, amphitheatres, drinking fountains and rubbish bins.
- Many members of the community mentioned the importance over respecting local aboriginal culture of the area as well as engaging with elders for development of a sensitive and integrated design.
- Respecting and enhancing the natural landscape through using native trees and plants - making this a key consideration through the youth space.
- Car parking and access were raised many times as items of importance to the space. Community members mentioned the difficulty in getting access to the site, particularly at busier peak traffic times of use.



FUNDING APPLICATION DESIGN 2018

2020 CONSULTATION FEEDBACK

FLOWING TRANSITION - KEY THEMES

The intermediate to advanced flowing transition area received a lot of positive feedback overall. However, some key themes that developed from responses are highlighted below:

- There are many young skaters within the Byron community, there should be separate provision for beginners outside of the flow bowl to cater for safe learning and learn to skate workshops. This could take the form of a small mini ramp, pump bumps and small scale beginner features.
- There was some overall discussion around whether as much transition is required within the facility as the region is lacking in street style features. However, there were still many participants that supported a intermediate bowl within the facility and felt it was crucial to the success of the park.
- The flow bowl should be closed in and separated from the rest of the facility to allow for use without potential for collision. This will maximise functionality outside of the wider facility.
- Some key comments on features included removal of the mogul and ball stall, inclusion of a spine, ensure there is ample space, some mellow transition, varying heights of transition, incorporate some hips and incorporate some granite coping for variation of materiality.

LEGEND

SKATE WORKS

- ① 1200 / 4FT Mini
- ② 1800H / 6 FT Taco Extension
- ③ 500H Mogul
- ④ 1200H / 4FT Volcano
- ⑤ Ball Stall
- ⑥ 1200H / 4FT Gap
- ⑦ 2400H / 8FT Flatbank



FUNDING APPLICATION DESIGN 2018

2020 CONSULTATION FEEDBACK

STREET ZONE - KEY THEMES

Many participants mentioned this would be their favourite area to use due to their preference of skate style. Some would like the street area to reflect more of a traditional plaza with authentic materials and slower flow. Some key themes that developed from responses are highlighted below:

- There were many comments around the overall layout; participants felt the central green zone hindered flow and could become an issue with pedestrians crossing to the central picnic area getting in the way of skate flow. There was also a strong push for the facility to create a continuous flowing loop.
- There were many suggestions to cater for more skill development where users can start small and progress up to advanced features. There was a push for varying height stair sets including a large set with rails and varying height ledges for progression.
- Some key comments on features included quarter pipe returns so there is no need for pushing, incorporation of a low manual pad, jersey barrier, pole jam, more rails, a fun box, and a more authentic street plaza feel.
- Participants felt that street skating in the area is under catered for and there should be a larger ration of street elements within the design.

LEGEND

SKATE WORKS

- ① A- Frame
- ② Hubbas + Rail
- ③ Slappy Kerb Pocket
- ④ Kicker Over Hydrant
- ⑤ 400H Ledge / Manny Pad
- ⑥ Hip to Ledge
- ⑦ 400H Flat Bar
- ⑧ Wally Rail
- ⑨ Bank to Ledge + Manny Pad



FUNDING APPLICATION DESIGN 2018

ADVANCED BOWL - KEY THEMES

Many participants mentioned that the bowl should be more advanced and deeper for skill progression, potential events and competitions. A common response was 'remove the flat bank' as participants believe it would slow the flow in this area and a more traditional shape would be better suited. Some key themes that developed from responses are highlighted below:

- Overall the community felt that the large bowl should be a more traditional shape with larger transition, at least 10ft (3M Deep). Allowing for more advanced users and potential for competitions.
- Some key comments on features included having a shallower half pipe section that allows users to work their way up to the advanced area. Incorporated a waterfall into a 10Ft deep end for big airs and more wow factor. The flat bank should be removed and all coping should be pool coping to reflect traditional deep bowl skating.
- Community requested more seating and shade provision around the big bowl with adequate space to hold events and competitions.
- Although there was much support for a large bowl, many community members also mentioned that the facility needs to cater for beginner to intermediate users and that this should not be given the most priority or space within the facility.

LEGEND

SKATE WORKS

- ① 1500H / 5FT Shallow
 - ② 1500H / 5FT Hip
 - ③ 2100H / 7FT Flatbank Hip
 - ④ 2400 / 8FT Extension Deep
- End



FUNDING APPLICATION DESIGN 2018

INITIAL SKETCH LAYOUT PLAN

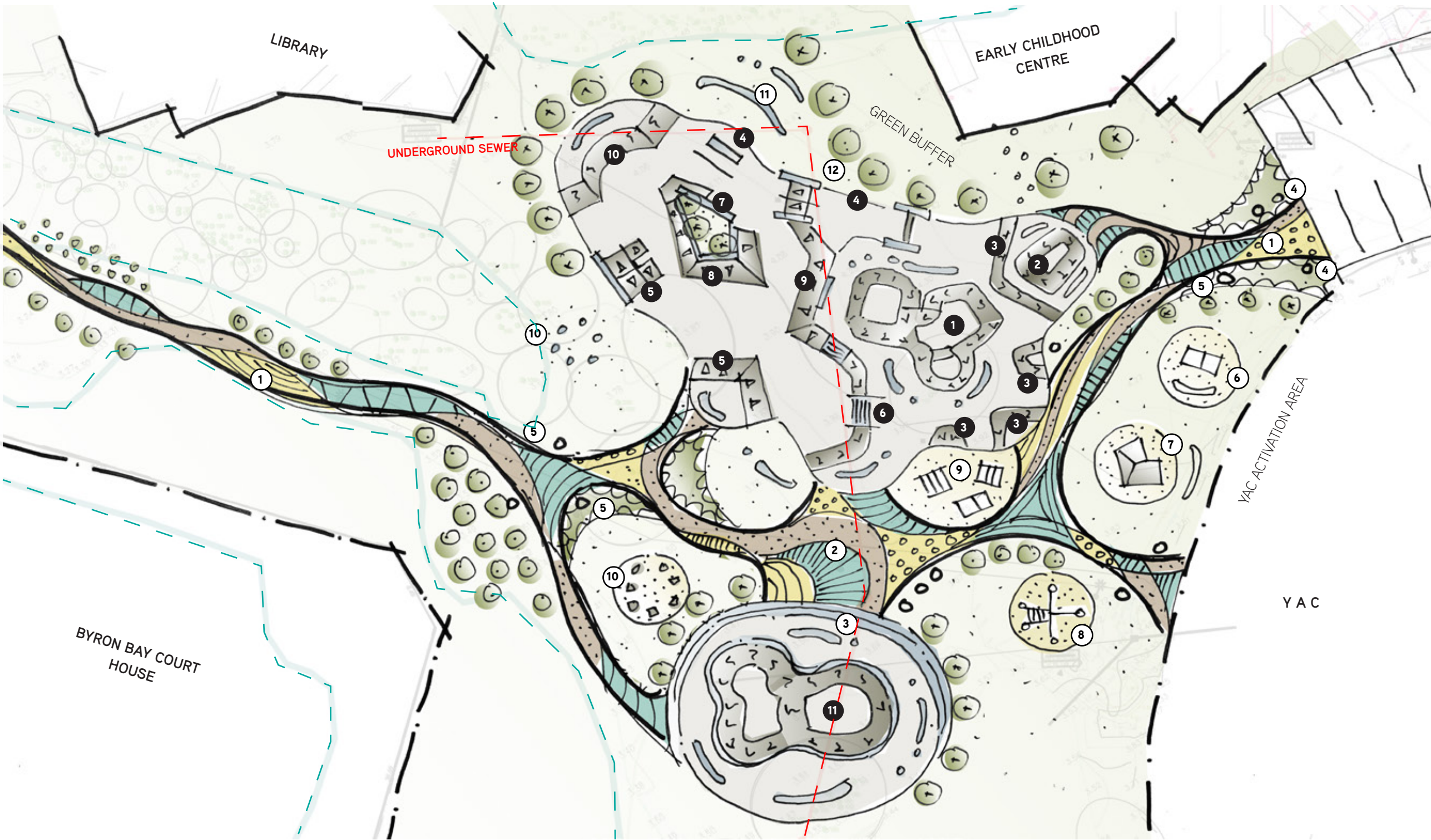
LEGEND

SKATE WORKS

- 1 Intermediate flow bowl
- 2 Separate kids Mini Ramp
- 3 DIY style flowing jibs
- 4 Slow paced street run
- 5 Fast paced street run
- 6 Advanced stair set
- 7 Stacked manny pad
- 8 China Banks
- 9 Flat bank to jersey
- 10 Big return
- 11 Competition pool bowl

LANDSCAPE WORKS

- 1 Arakwal east-west feature path
- 2 Central confluence, events area
- 3 Terraced spectator seating
- 4 Entry signage / way finding
- 5 Educational signage
- 6 Outdoor Ping pong
- 7 Bouldering rock
- 8 Parkour pit
- 9 BBQ Area
- 10 Yarning circle
- 11 Informal amphitheatre + spectator seating
- 12 Bean bag chill zone



CLIENT



CONVIC

Unit 13, 46-50 Regent Street
Richmond VIC 3121
T (03) 9486 9899
convic.com

PROJECT

BYRON BAY YOUTH SPACE

TITLE

Sketch Layout Plan

DATE

15.01.2021

REVISION

00

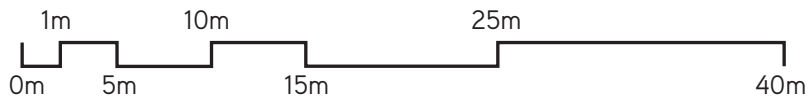
LEGEND

SKATE WORKS

- 1 1200H quarter pipe
- 2 1500H taco w granite coping
- 3 2200H steep flat bank
- 4 Granite out ledge
- 5 A- Frame with rails
- 6 Kicker to kicker
- 7 1200H China bank
- 8 600H Bank w rail + hubbas
- 9 1000H Flatbank
- 10 250H Manual pad
- 11 400H Flat bar
- 12 150H Manual pad
- 13 Bank to slappy kerb
- 14 Advanced 6 stair + rails
- 15 Euro gap
- 16 Arced pole jam
- 17 550H Mogul
- 18 600H flatbank hip
- 19 450H mogul
- 20 750H spine
- 21 750H beginner mini ramp
- 22 750H Quarter pipe
- 23 400H 2 stair, out ledge, wallie rail + hubba
- 24 450H taco
- 25 1650H Taco extension
- 26 1200H quarter pipe
- 27 1200H Spine
- 28 1200H Volcano
- 29 1200H hip
- 30 1800H quarter pipe w pool coping
- 31 600H waterfall
- 32 3000H Vert Quarter pipe
- 33 600H Escalating extension



CLIENT



1:400 @ A3

CONVIC

Unit 13, 46-50 Regent Street
Richmond VIC 3121
T (03) 9486 9899
convic.com

PROJECT
BYRON BAY YOUTH SPACE

TITLE
FINAL CONCEPT PLAN - SKATE

DATE
26.02.21

REVISION
A



LEGEND

LANDSCAPE WORKS

- ① Arakwal east-west art walk
- ② Arakwal informative signage
- ③ Limestone gravel surface
- ④ Yarning circle
- ⑤ Skatepark entry point
- ⑥ Central events lawn, meeting place
- ⑦ Spectator terraces
- ⑧ Large shelter
- ⑨ Small shelter
- ⑩ BBQ + picnic area
- ⑪ Bouldering rock
- ⑫ Outdoor ping pong
- ⑬ Amphitheatre limestone seating
- ⑭ Drinking fountain
- ⑮ Rubbish bin
- ⑯ Native shrub planting
- ⑰ Balustrade
- ⑱ Skatepark seating
- ⑲ Way finding signage



CLIENT



1:400 @ A3

CONVIC

Unit 13, 46-50 Regent Street
Richmond VIC 3121
T (03) 9486 9899
convic.com

PROJECT
BYRON BAY YOUTH SPACE

TITLE
FINAL CONCEPT PLAN - LANDSCAPE

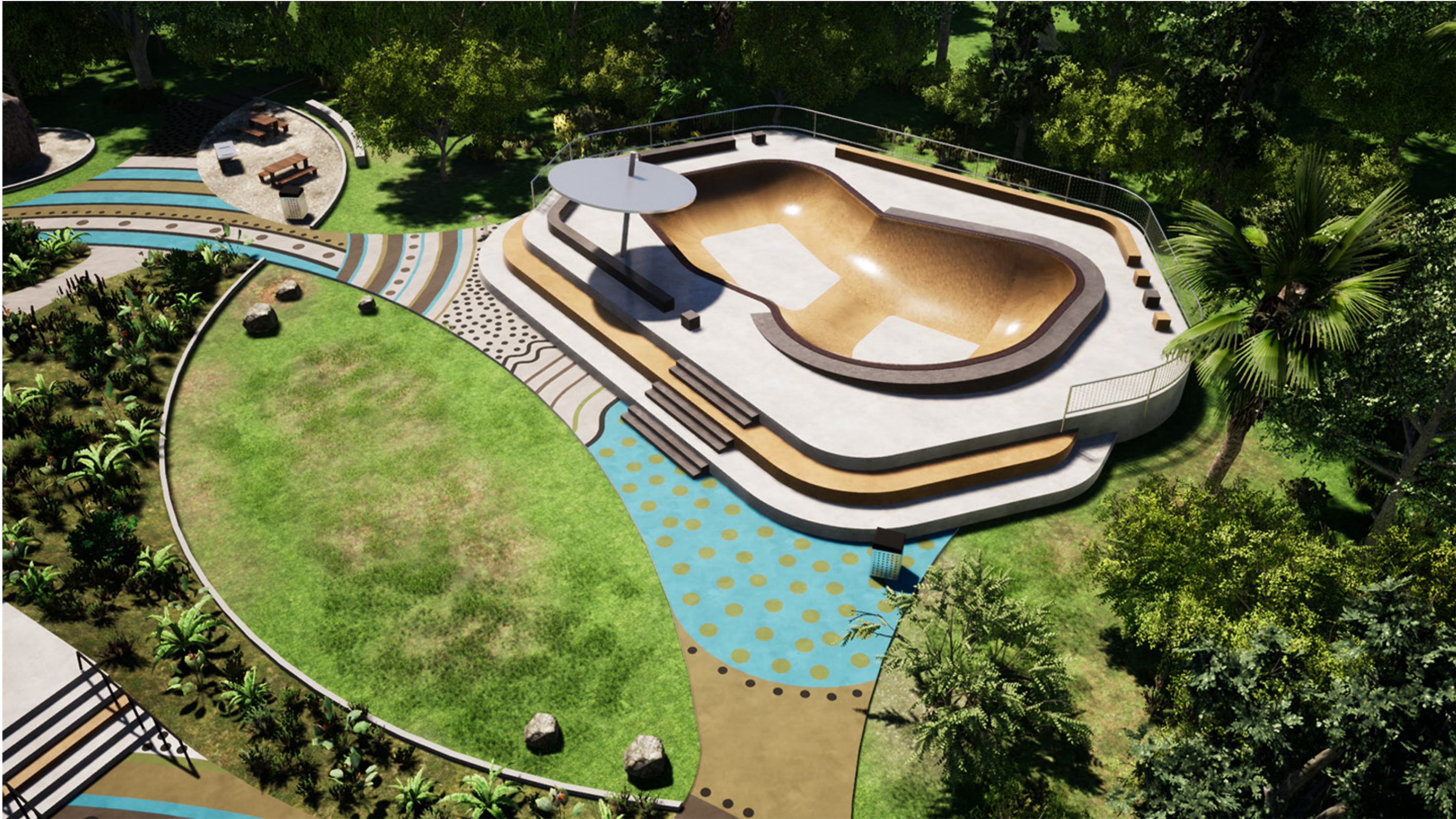
DATE
26.02.21

REVISION
A













PALETTES - FLOW AREA

SKATE FEATURE PRECEDENTS

1. Flat bank hip
2. Spine and flat bank
3. Separate mini ramp
4. Flat bank and volcano
5. Flow bowl with spine + hip



PALETTES - STREET AREA

SKATE FEATURE PRECEDENTS

1. Separate runs around central green
2. Jersey barrier
3. 6 Stair and hand rail
4. Large flat bank
5. Kicker to kicker



PALETTES - ADVANCED BOWL

SKATE FEATURE PRECEDENTS

1. Elevated bowl
2. 'Half pipe' shallow end
3. Granite pool coping
4. Granite pool coping
5. Competitions and events



PALETTES - AMENITY+ REC

FURNITURE PRECEDENTS

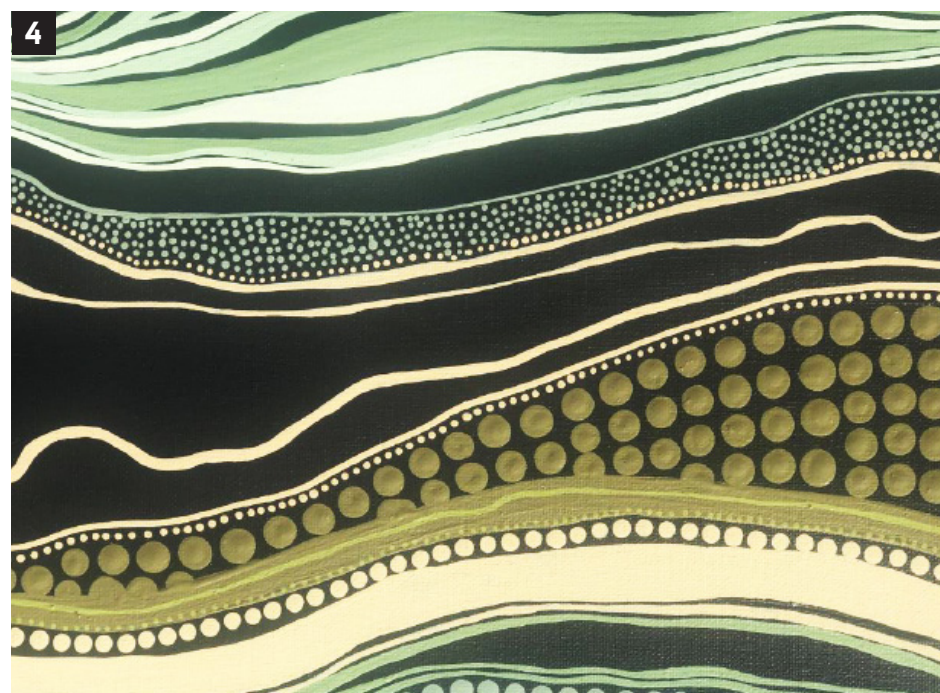
1. Natural Shade
2. Shade Shelter and Seating
3. Bouldering
4. Parkour
5. BBQ areas + Picnic Tables



PALETTES - ART + CULTURAL INTERPRETATION

SKATE FEATURE PRECEDENTS

1. Art walk
2. Iconic art interpretation
3. Yarning circle
4. Integration of Arakwal art + story telling
5. Sculptural art elements + landscape spectator terraces



CONVIC

CREATE COMMUNITY

UNIT 13, 46-50 REGENT STREET
RICHMOND VIC 3121 AUSTRALIA
T +61 3 9486 9899 F +61 3 9486 9088
CONVIC.COM