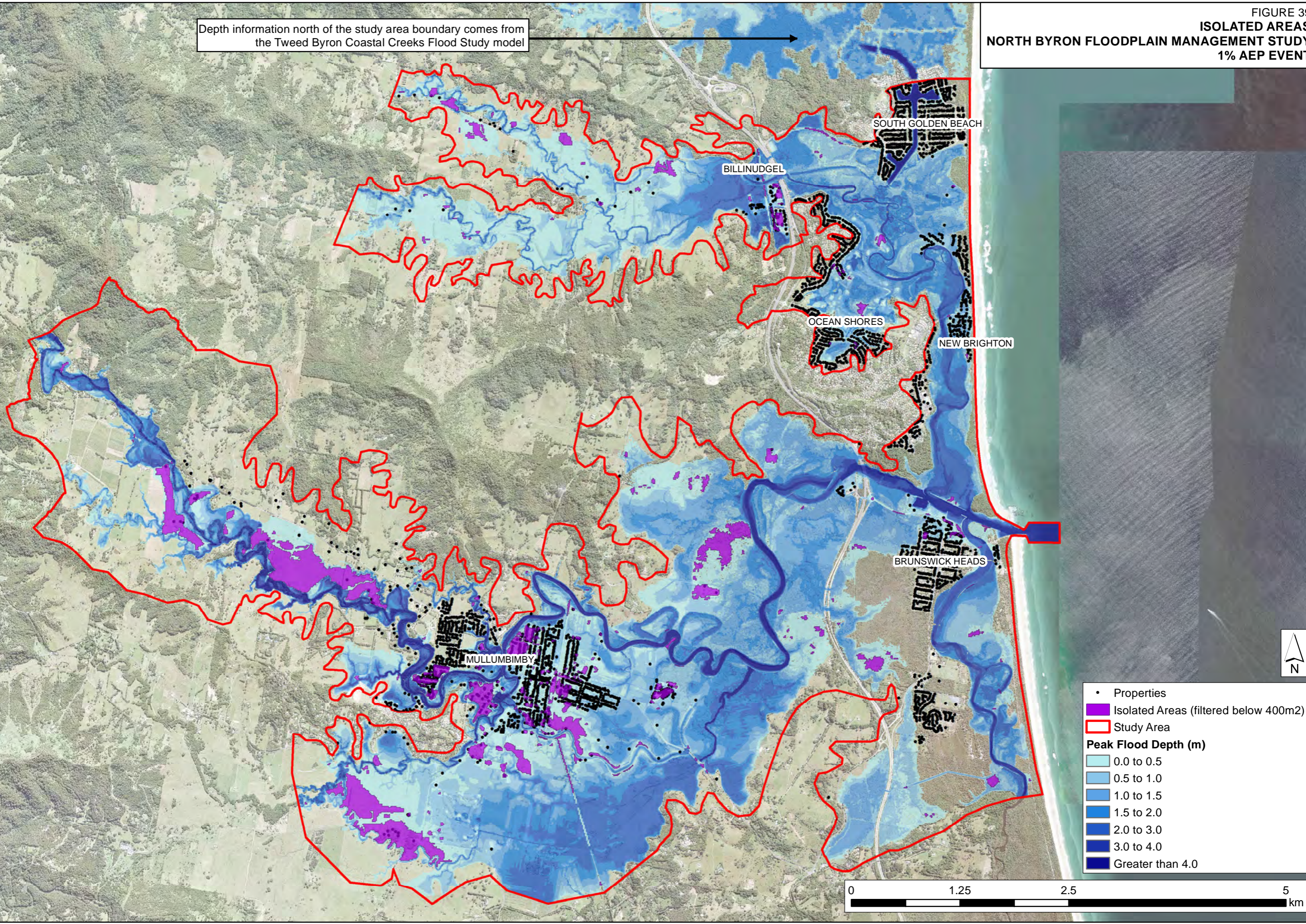


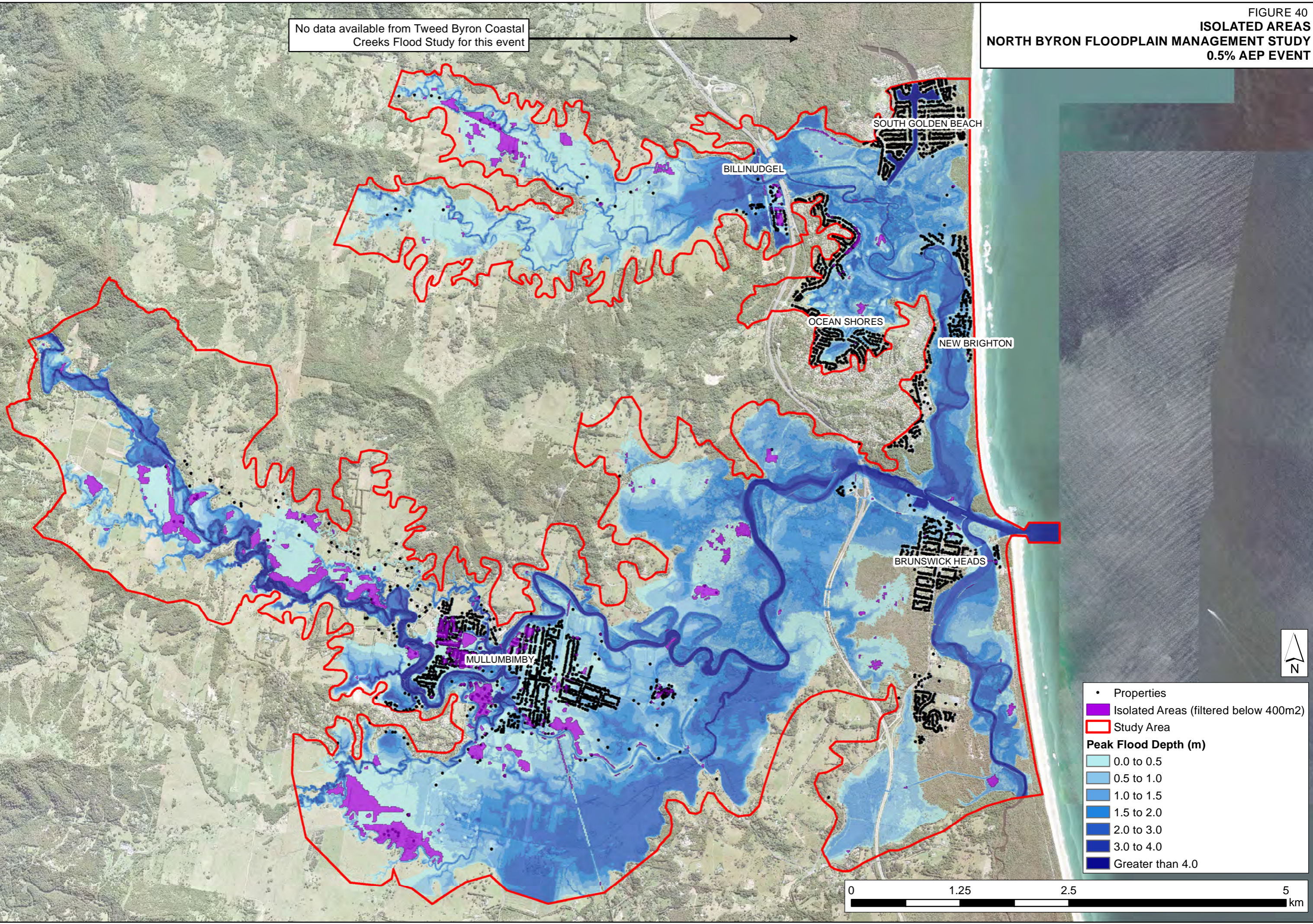
**ISOLATED AREAS**  
**NORTH BYRON FLOODPLAIN MANAGEMENT STUDY**  
**1% AEP EVENT**

Depth information north of the study area boundary comes from the Tweed Byron Coastal Creeks Flood Study model



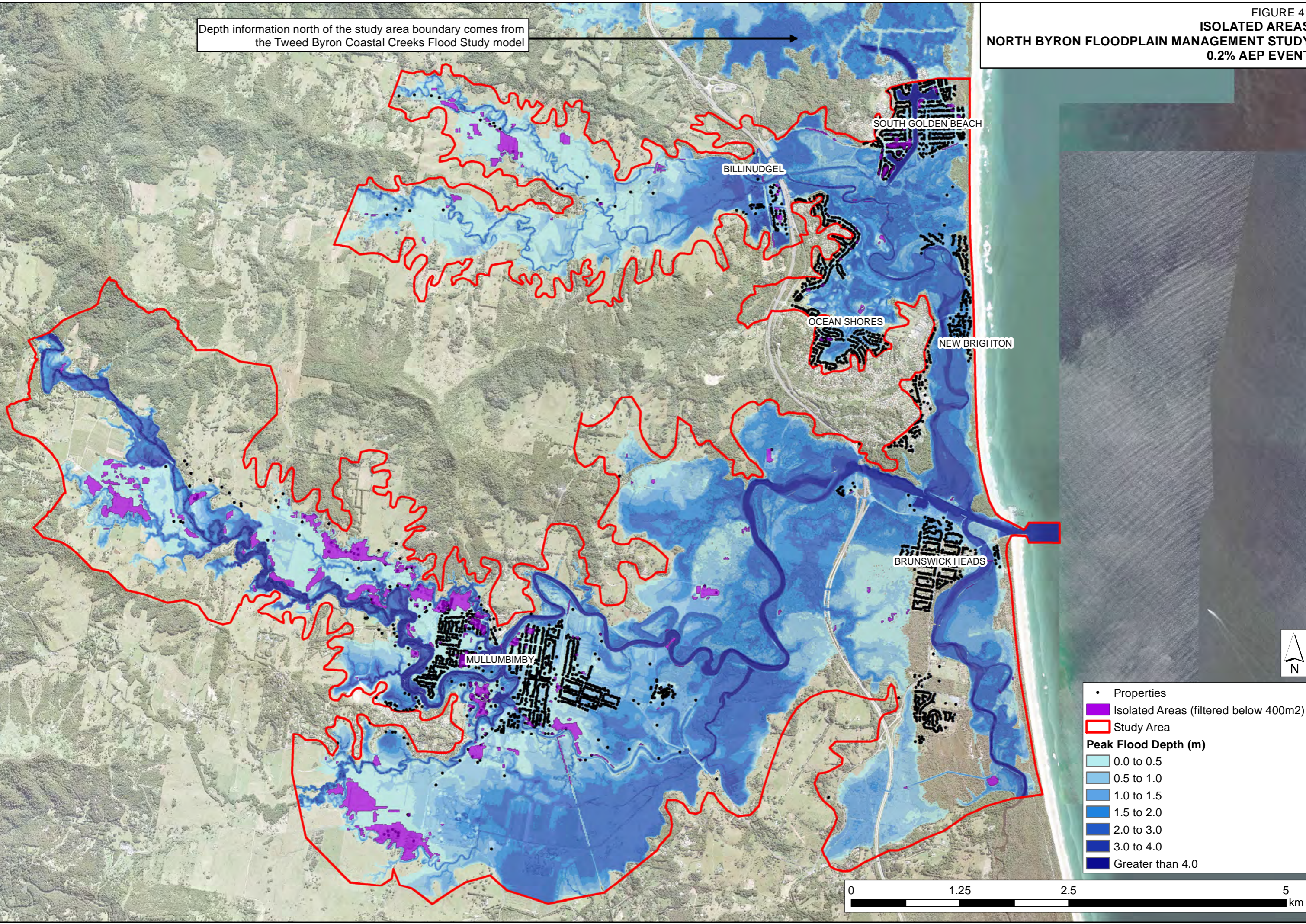
J:\Jobs\117098\Arc\Maps\IsolatedAreas\Figure05\_IsolatedAreas\_100yr.mxd

No data available from Tweed Byron Coastal  
Creeks Flood Study for this event

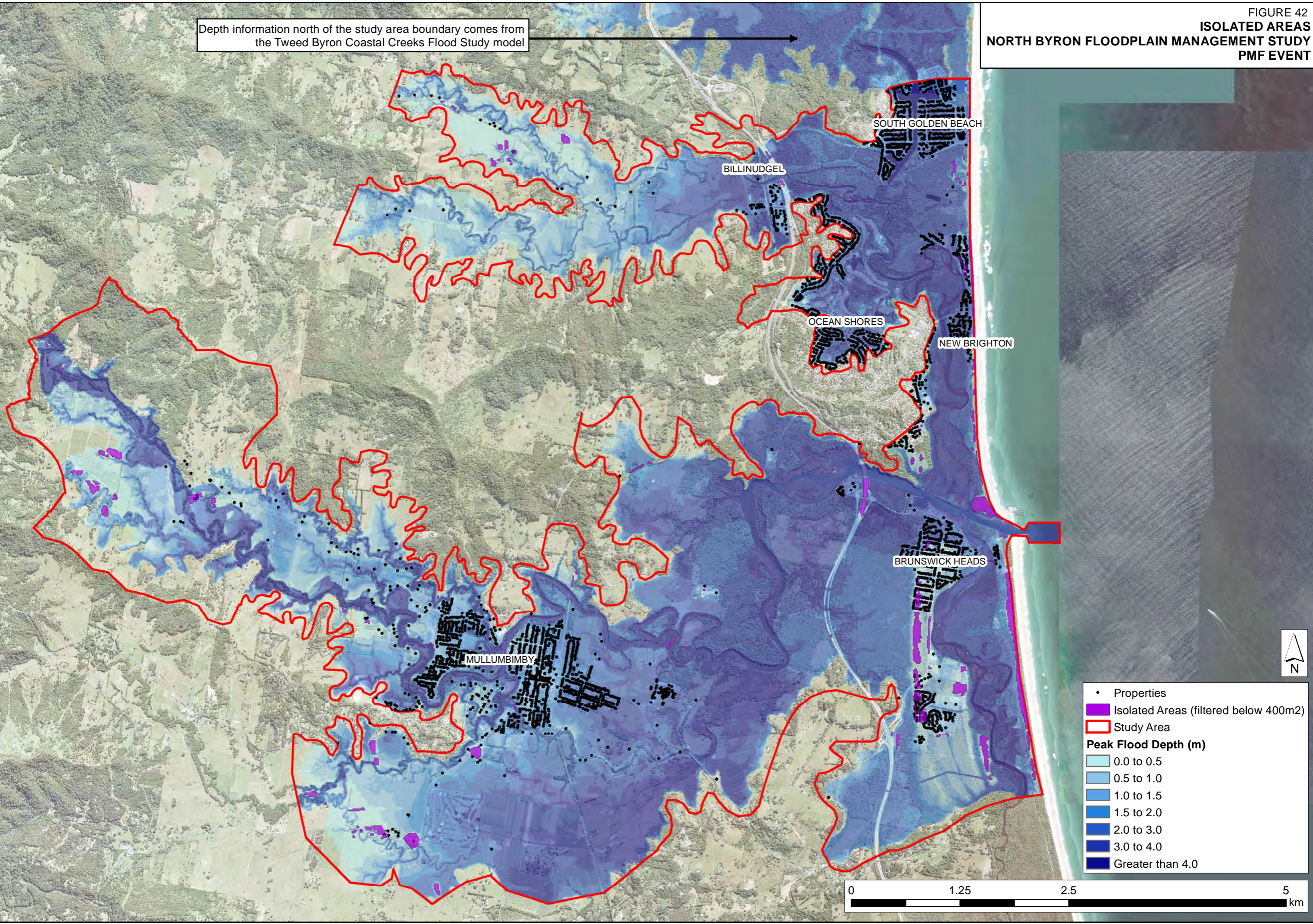


- Properties
  - Isolated Areas (filtered below 400m2)
  - ▭ Study Area
- Peak Flood Depth (m)**
- 0.0 to 0.5
  - 0.5 to 1.0
  - 1.0 to 1.5
  - 1.5 to 2.0
  - 2.0 to 3.0
  - 3.0 to 4.0
  - Greater than 4.0

Depth information north of the study area boundary comes from the Tweed Byron Coastal Creeks Flood Study model



Depth information north of the study area boundary comes from the Tweed Byron Coastal Creeks Flood Study model



- Properties
  - Isolated Areas (filtered below 400m<sup>2</sup>)
  - Study Area
- Peak Flood Depth (m)**
- 0.0 to 0.5
  - 0.5 to 1.0
  - 1.0 to 1.5
  - 1.5 to 2.0
  - 2.0 to 3.0
  - 3.0 to 4.0
  - Greater than 4.0