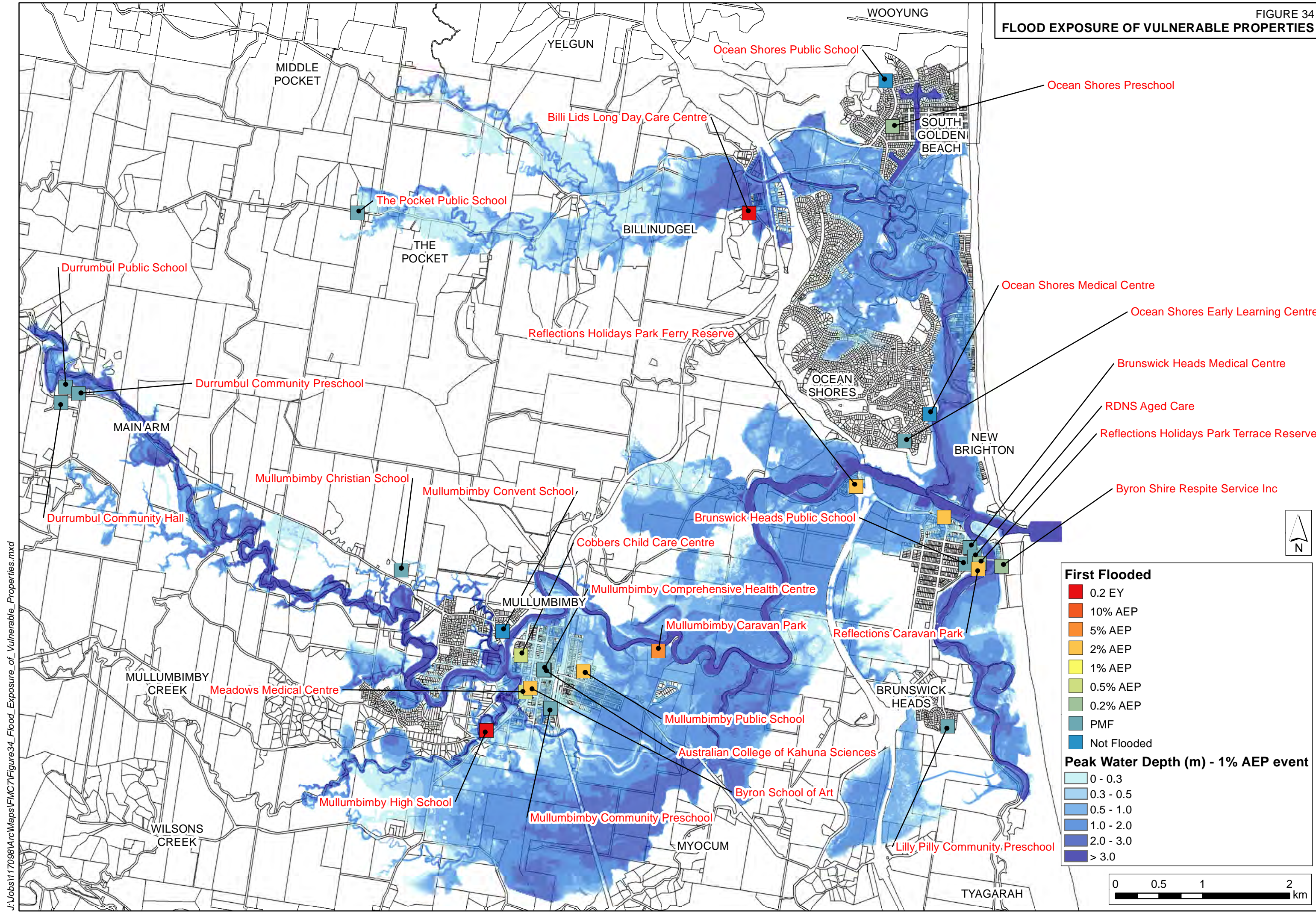


FLOOD EXPOSURE OF VULNERABLE PROPERTIES

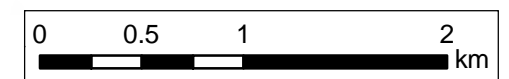


**First Flooded**

- 0.2 EY
- 10% AEP
- 5% AEP
- 2% AEP
- 1% AEP
- 0.5% AEP
- 0.2% AEP
- PMF
- Not Flooded

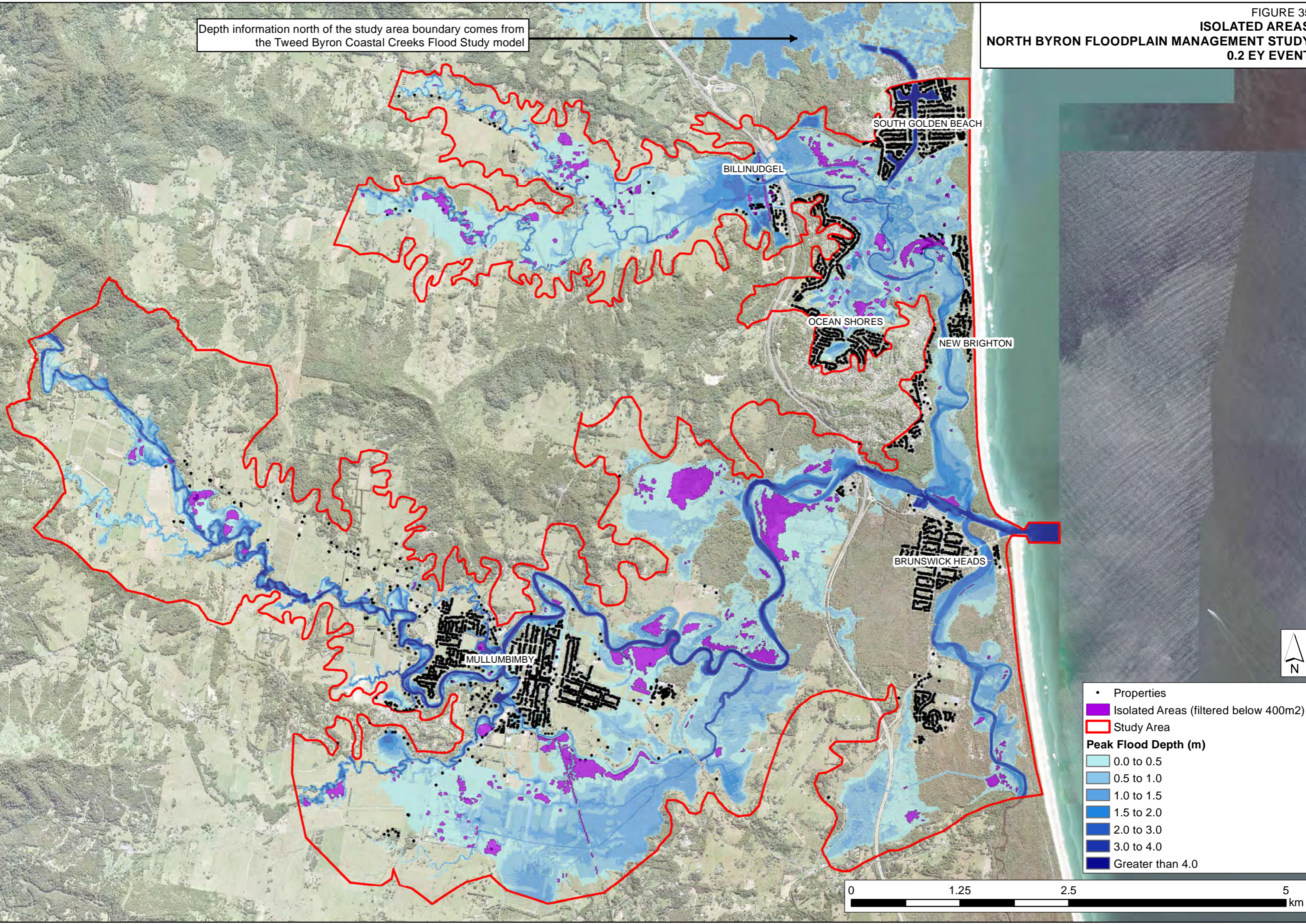
**Peak Water Depth (m) - 1% AEP event**

- 0 - 0.3
- 0.3 - 0.5
- 0.5 - 1.0
- 1.0 - 2.0
- 2.0 - 3.0
- > 3.0



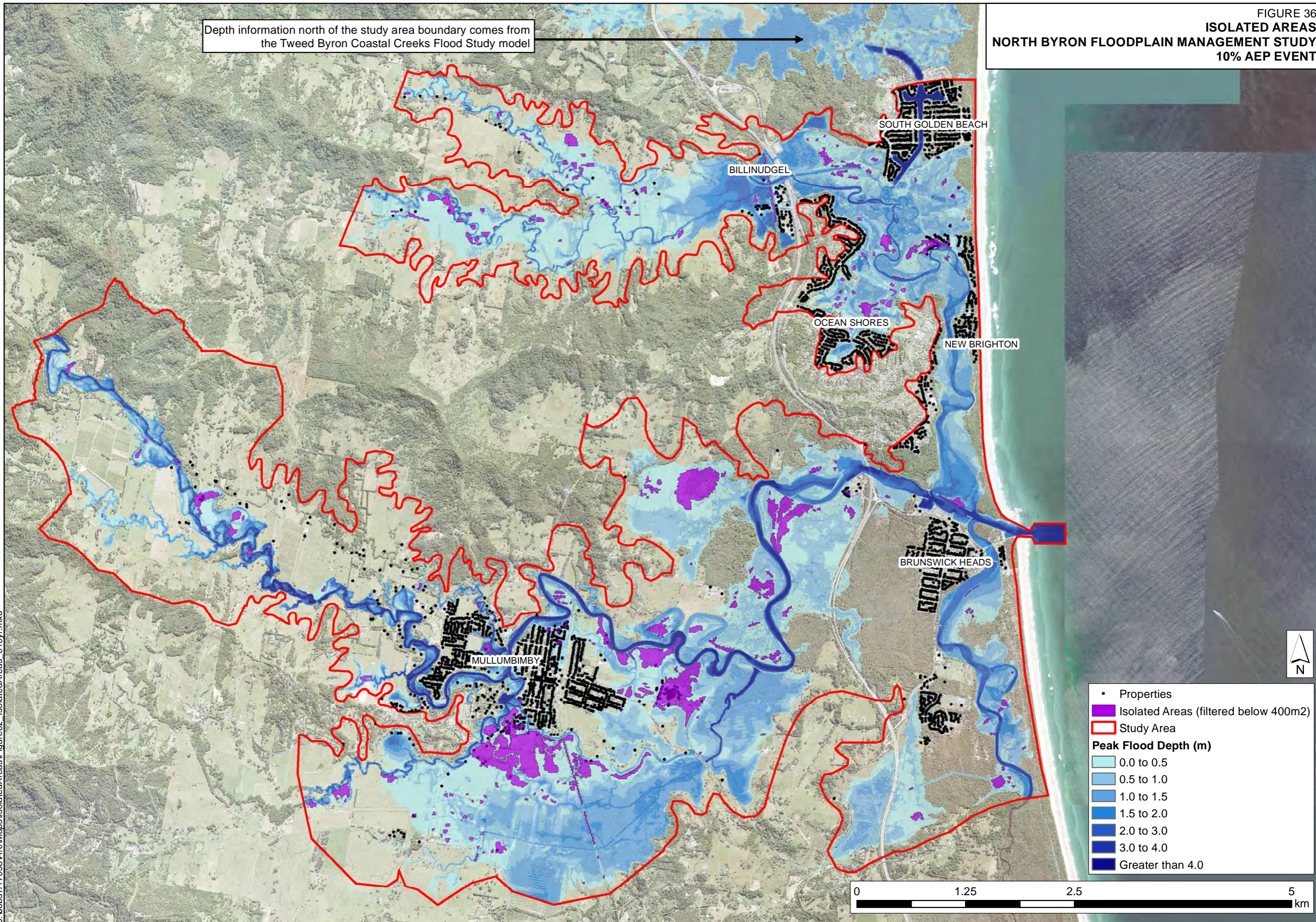
**ISOLATED AREAS**  
**NORTH BYRON FLOODPLAIN MANAGEMENT STUDY**  
**0.2 EY EVENT**

Depth information north of the study area boundary comes from the Tweed Byron Coastal Creeks Flood Study model



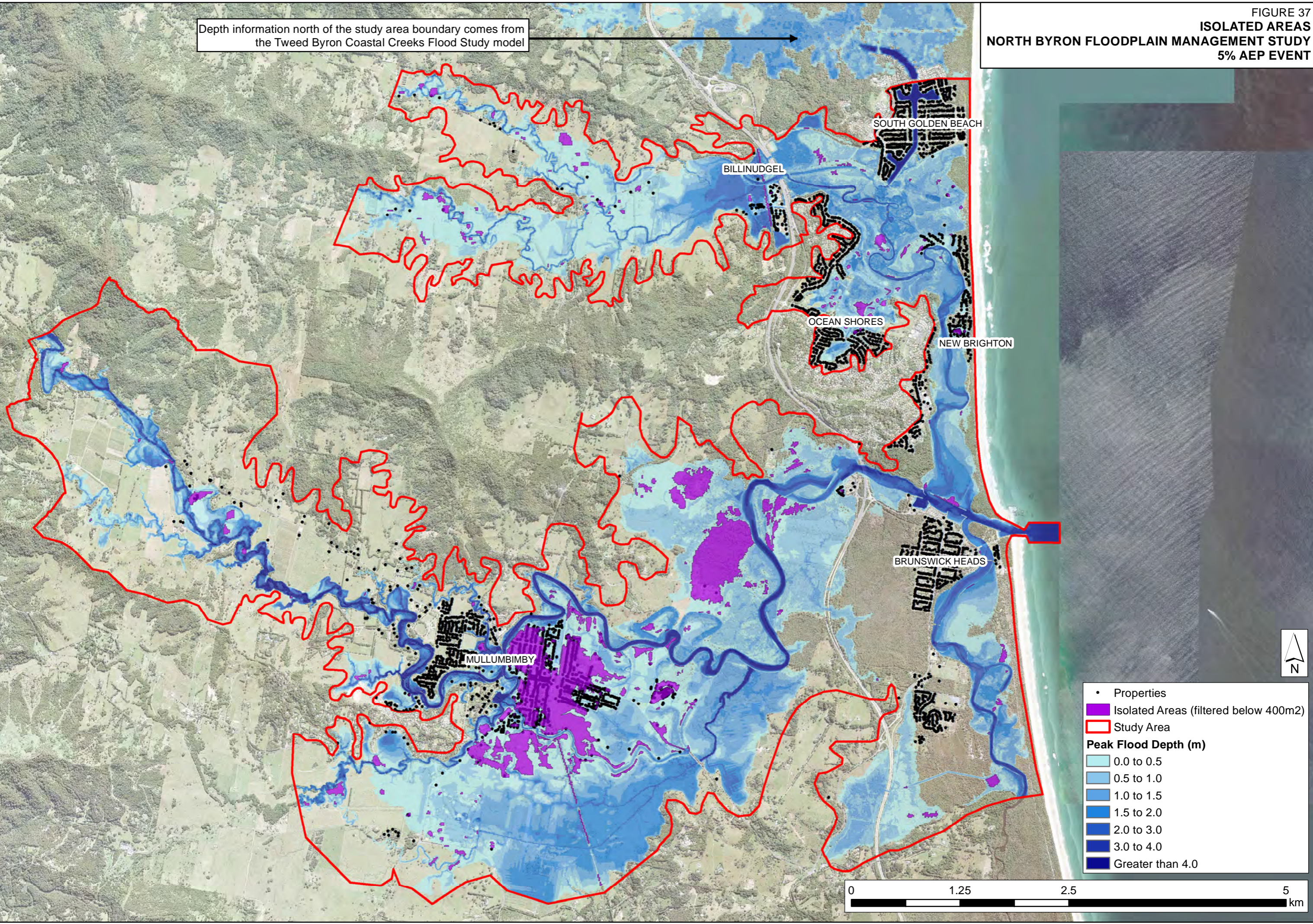
- Properties
  - Isolated Areas (filtered below 400m2)
  - Study Area
- Peak Flood Depth (m)**
- 0.0 to 0.5
  - 0.5 to 1.0
  - 1.0 to 1.5
  - 1.5 to 2.0
  - 2.0 to 3.0
  - 3.0 to 4.0
  - Greater than 4.0

Depth information north of the study area boundary comes from the Tweed Byron Coastal Creeks Flood Study model



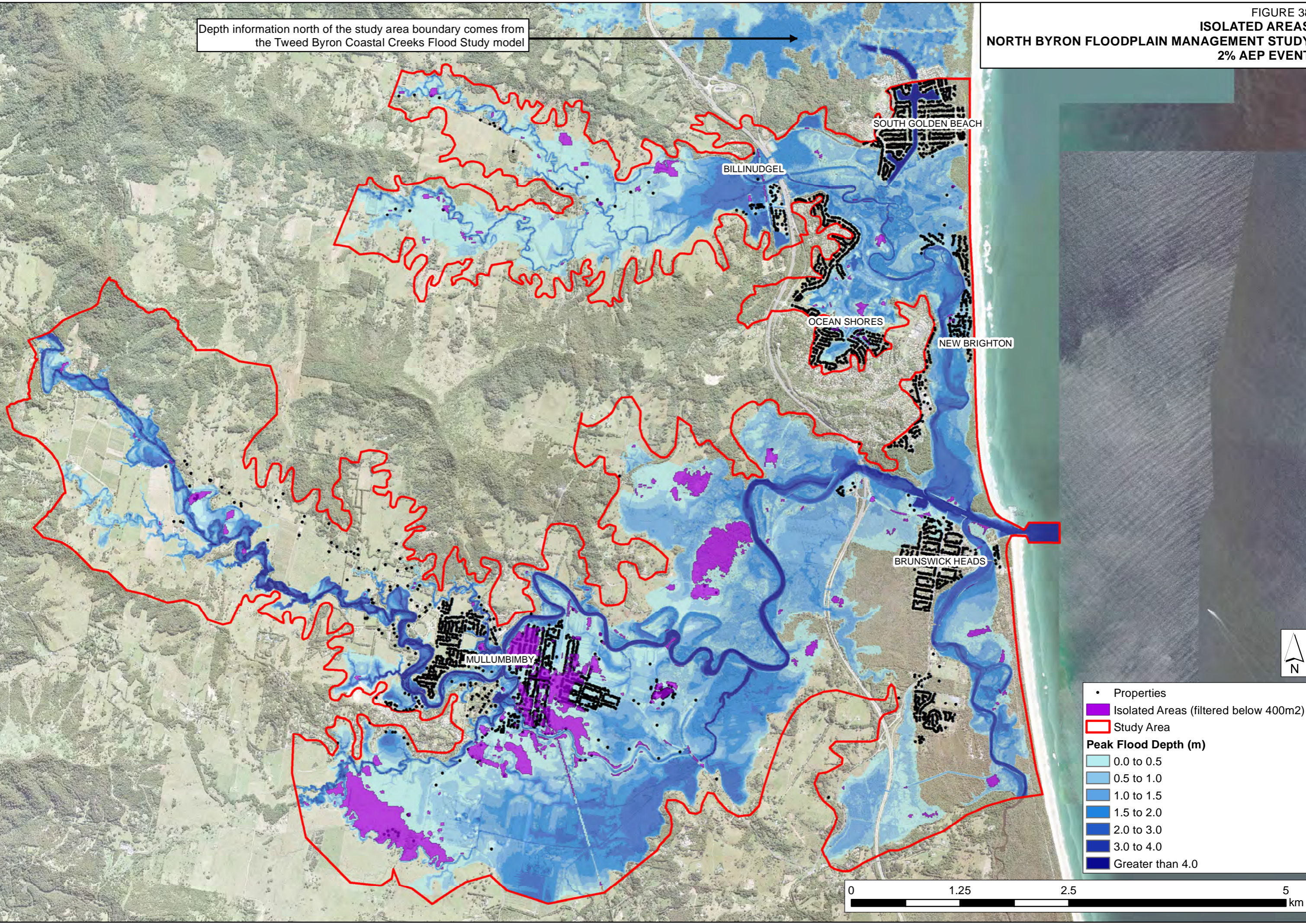
- Properties
  - Isolated Areas (filtered below 400m2)
  - Study Area
- Peak Flood Depth (m)**
- 0.0 to 0.5
  - 0.5 to 1.0
  - 1.0 to 1.5
  - 1.5 to 2.0
  - 2.0 to 3.0
  - 3.0 to 4.0
  - Greater than 4.0

Depth information north of the study area boundary comes from the Tweed Byron Coastal Creeks Flood Study model



- Properties
  - Isolated Areas (filtered below 400m2)
  - Study Area
- Peak Flood Depth (m)**
- 0.0 to 0.5
  - 0.5 to 1.0
  - 1.0 to 1.5
  - 1.5 to 2.0
  - 2.0 to 3.0
  - 3.0 to 4.0
  - Greater than 4.0

Depth information north of the study area boundary comes from the Tweed Byron Coastal Creeks Flood Study model



- Properties
  - Isolated Areas (filtered below 400m2)
  - Study Area
- Peak Flood Depth (m)**
- 0.0 to 0.5
  - 0.5 to 1.0
  - 1.0 to 1.5
  - 1.5 to 2.0
  - 2.0 to 3.0
  - 3.0 to 4.0
  - Greater than 4.0

