



Bangalow Village Plan

Part B Realising the Vision

This Part of the Bangalow Village Plan sets out an aspirational framework for delivery of the projects and initiatives identified in the Bangalow Village Plan.

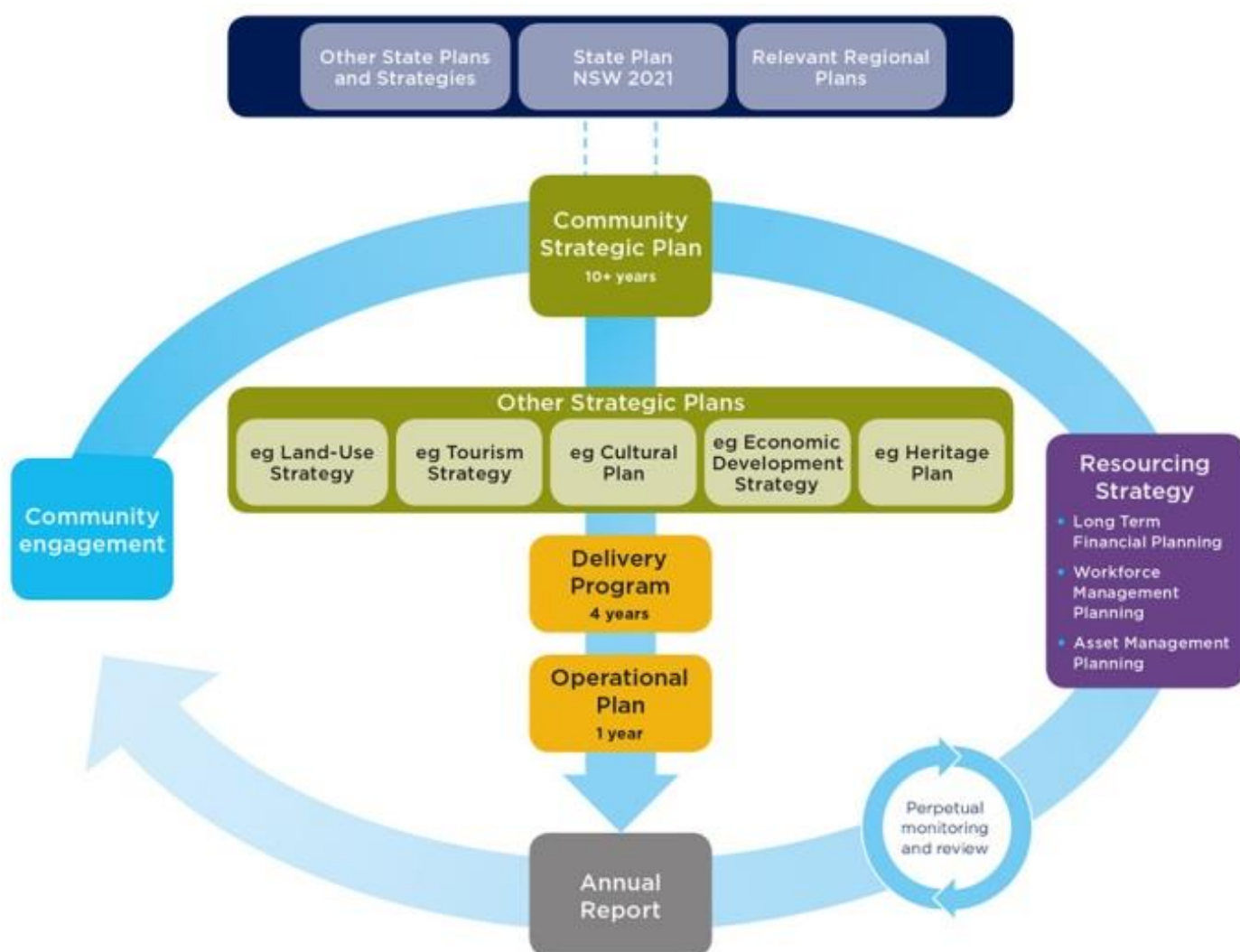
Delivering the Initiatives

The Initiatives in Part A of the Village Plan have been identified through a collaborative process with the Bangalow Community.

Implementation of these initiatives will be achieved through Council’s

Delivery Program

as one of the “other Strategic Plans” (see below)



This Implementation Plan outlines how the initiatives will be prioritised for consideration within the Delivery Program.

Grant funding may also be pursued for a variety of initiatives, outside of the Delivery Program.



Operational Plan 2019/20

The following initiatives are included in the current Operational Plan and will therefore be progressed in the 2019/20 financial year:

- **Creation of a structure plan for Station Street and the area known as ‘The Triangle’ and updates to Chapter E2 Bangalow of Byron Development Control Plan 2014, to guide integrated land-use planning and development outcomes in Bangalow (Initiatives 1.2.2, 2.2.2, 2.2.3, 2.3.1)**
- **Review Plan of Management for Bangalow Sports Fields (Initiative 1.3.1)**
- **Continue to undertake the Biodiversity Conservation Strategy Review (Initiatives 4.1.1 & 4.1.2)**
- **Implement Net Zero Emissions Strategy for Council operations 2025 (Initiative 4.3.2)**

The remaining Initiatives will be considered in future operational plans, based on the priorities discussed below.



Key Priority Projects

These 3 projects occupy the highest priority positions as identified by the Bangalow Village Guidance Group and the Bangalow community.

Linking the town

Create a walking and cycling network around Bangalow Village that includes linkage of open spaces, natural areas and parks (Initiative 3.1.5)

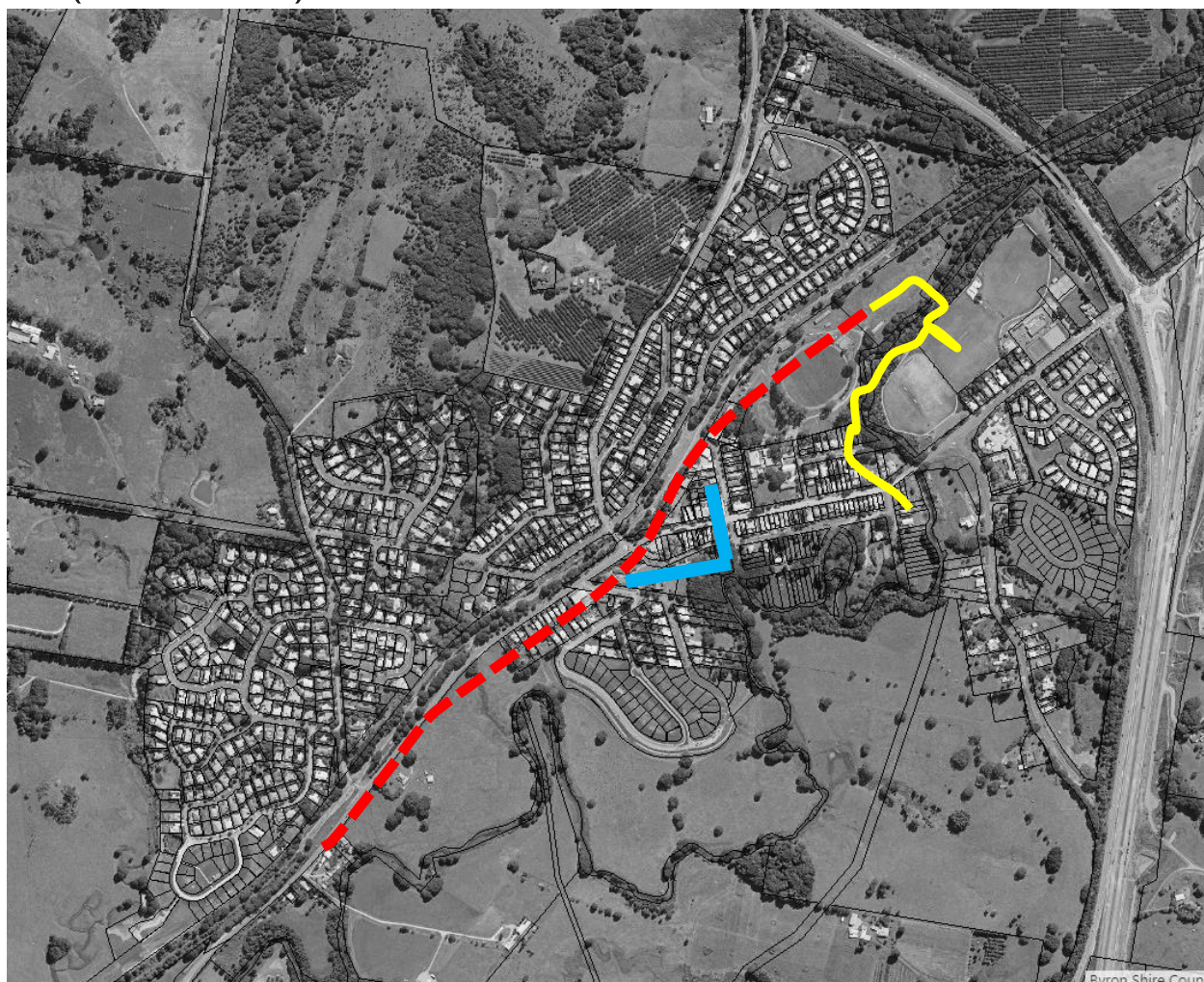
- Create a walk/cycle route along the rail corridor extending from Rifle Range Road to the sports fields to linking the entire town.

Provision for this connection is included in Council's Draft Shire-wide Bike Plan

- Provide new walk/cycle path connections between Showgrounds and sports fields including bridge(s) across Byron Creek.

Provision for this connection is included within Council's PAMP (Pedestrian Access & Mobility Network), adopted by Council on the 24/10/2019.

- Redesign and redevelop the village core to improve its general amenity, connectivity and prioritisation for pedestrians (Initiative 1.2.1).



Celebrating Heritage and Planning the Future

Review the existing planning controls to protect the heritage character of the village and village centre.

- Creation of a structure plan to inform future Development Control Plan amendments for Station Street and the area known as 'The Triangle'
- Encourage new mixed use developments in the village centre to provide a diversity of business accommodation options
- Prepare development controls relating to landscaped gardens and low front fences in the front setback of residential lots. Also consider reduced setbacks for houses on small lots and multi-unit developments
- Include the structure plan in the Bangalow Village Plan and Chapter E2 Bangalow of Byron Development Control Plan 2014, to guide integrated land-use planning and development outcomes in Bangalow
- Prepare development controls to encourage active building frontages, finer-grained commercial spaces and active uses of widened footpaths in the commercial centre

(Included in 2019/20 Operation Plan).



Bangalow – a Pedestrian Friendly Place

Create a pedestrian friendly environment in the village centre by prioritising people over cars.

- Reducing the speed limit on entrance roads and Byron Street (Initiative 3.2.3)
- Create a shared zone in Station Lane and Market Street to provide a safer environment around the Primary School (Initiative 3.1.3)
- Create a shared zone in Station Street directly in front of the AA&I Hall to function as a spill out area
- Provide end-of-trip facilities to encourage walking and cycling into the village centre (Initiative 3.1.9)
- Improve the street planting as a part of a wider landscape plan for the town centre to create shade (Initiative 1.2.1)



Implementing the Remaining Initiatives

Progressing the initiatives in the Village Plan is achievable, but requires coordinated effort and active participation across a variety of stakeholders.

While Byron Shire Council will lead the governance of the Plan’s implementation, delivering the Plan is a shared responsibility. Place Managers located at Council and an ongoing implementation role for representatives of the Bangalow Guidance Group, who helped create the Plan, will be key drivers.

This creates opportunity for stakeholders acting either independently or in partnership to actively contribute to delivering initiatives over time.

This Implementation Plan outlines each of the priority and supporting initiatives, along with delivery timeframes (current, short, medium or long term), who is the lead, and the likely funding source for each of the Initiatives contained in Part A.

In terms of priority:

- Current means budget is allocated in the 2019/20 Operational Plan;
- Short-Term means a budget bid will be considered for inclusion in the Operational Plan within the next three (3) years;
- Medium-Term means a budget bid would be considered within the following three (3) to five(5) years; and
- Long-term means a budget bid would be considered within the next ten (10) years.

IMPLEMENTATION PLAN

<i>THEME</i>	<i>ACTION</i>	<i>WHO</i>	<i>WHEN</i>	<i>FUNDING</i>
Public Realm				
1.1 Rural, green & welcoming	1 Create attractively landscaped vehicular-scale entry treatments on Granuaille Road, Lismore-Bangalow Road and Byron Bay Road.	Byron Shire Council with significant community stakeholder input,	Short-term	\$\$ - Council + potential for grant funding

THEME	ACTION	WHO	WHEN	FUNDING
		particularly from the Bundjalung of Byron Bay – Arakwal Bumberlin people		
	2 Create pedestrian-scale entry treatments to the village centre at Memorial Park (western entry) and just after the J.C. Snow bridge (eastern entry). Enhance landscaping in the public road reserve of Byron Street and the grounds of heritage sites (Church of England, ‘Riverview House’ and the old police station/court house).	Byron Shire Council with significant community stakeholder input	Long-term	\$\$ - Council & land owners
	3 Investigate the potential for a new public park and lookout at the top of the hill in Rankin Drive in the vicinity of the water tower.	Byron Shire Council	Long-term	\$ - Council + potential grant funding
	4 Prepare development controls relating to the protection and/ or revegetation of native vegetation on ridge tops surrounding the village.	Byron Shire Council	Long-term	\$ - Council
	5 Prepare a street tree planting plan for residential streets and the industrial estate.	Byron Shire Council	Long-term	\$ - Council
	6 Prepare development controls relating to landscaped gardens and low front fences in the front setback of residential lots. Also consider reduced setbacks for houses on small lots and multi-unit developments.	Byron Shire Council	Long-term	\$ - Council
	7 Council, property owners and traders work in partnership to maintain the streets, buildings, public spaces and gardens in the village centre to a high standard of cleanliness and visual amenity.	Community-led (Chamber of commerce & land owners) + Byron Shire Council	Medium-term	\$ - community funded

THEME	ACTION	WHO	WHEN	FUNDING	
1.2 Active Centre	1	Redesign and redevelop the village core in an integrated way to improve its general amenity, connectivity, useability and prioritisation for pedestrians. Projects will be designed in collaboration with Bundjalung communities. Considerations may include: footpath renewal and widening where possible, suitable street furniture, end-of-trip facilities for cyclists, signage (way-finding and informational), more lighting, street trees and landscaping. The following spaces in the core area are a priority for improvement: Byron Street (main street), Station Street, A&I Hall Surrounds, Memorial Park, Fire Station Park and the Railway Corridor.	Byron Shire Council with significant community stakeholder input, including the Bundjalung of Byron Bay – Arakwal Bumberlin people	Short-term	\$\$ - Council + potential grant funding
	2	Prepare development controls to encourage active building frontages, finer-grained commercial spaces and active uses of widened footpaths in the commercial centre.	Byron Shire Council	Short-term	\$ - Council
	3	Investigate feasibility and start discussions with private landowners in the village centre to facilitate pedestrian links to connect private and commercial spaces in the public realm.	Byron Shire Council + land owners	Medium-term	\$ - Council
	4	Develop loading zone and servicing area plan for the village centre, including the preparation of development controls encouraging consolidated areas shared between adjacent developments.	Byron Shire Council + Chamber of commerce + business owners	Medium-term	\$ - Council + business owners

THEME	ACTION	WHO	WHEN	FUNDING	
1.3 Complementary Open Spaces	1	Undertake a review of the plans of management (or similar) for the following community lands: sports fields; Bangalow parklands; rail corridor and showground.	Byron Shire Council	Current	\$ - Council
	2	Prepare open space precinct masterplans, in collaboration with Bundjalung communities, reflecting the changing trends and anticipated demand for recreational and leisure facilities.	Byron Shire Council with significant community stakeholder input, including the Bundjalung of Byron Bay - Arakwal Bumberlin people	Medium-term	\$\$ - Council
Built Form & Structure					
2.1 A visible history	1	Protect and enhance key heritage sites around the village. Considerations may include: improved landscaping, lighting to highlight heritage building facades and interpretive signage.	Byron Shire + land owners	Medium-term	\$\$ - Council, land owners + potential grant funding
	2	Review the 'Byron Shire Community Based Heritage Study' to inform the preparation of development controls to be more outcome and goals focused so it can guide new development to 'fit in' with what's already here. In particular, the documents should: <ul style="list-style-type: none"> define character precincts within the existing heritage conservation area and specific controls to guide development in each precinct preserve additional buildings, sites and landscape elements that contribute to place character include a 'significant tree register' and supporting development controls that identify mature trees to be retained on 	Byron Shire Council	Medium-term	\$ - Council + potential grant funding

THEME	ACTION	WHO	WHEN	FUNDING
	private and public lands.			
	3 Renew the old station building as part of the wider rail corridor activation. Investigate a range of potential.	Byron Shire Council	Medium-term	\$\$ - Council + potential grant funding
2.2 A varied village for all	1 Investigate and develop planning controls to: <ul style="list-style-type: none"> encourage higher residential densities in land within close walking distance to the village centre encourage a diversity of housing types and forms throughout the village with an emphasis on the provision of housing options for smaller households and households without children located in and within close walking distance to the village centre support a mixed use village centre which allows for a variety of compatible different uses. support a mixed use village centre that allows for a variety of compatible different uses. 	Byron Shire Council (as part of Residential Strategy)	Residential Strategy has commenced	\$ - Council
	2 Prepare a Village Structure Plan following Council's adoption of the following shire-wide planning strategies: <ul style="list-style-type: none"> Byron Residential Strategy Byron Employment Lands Strategy Environmental Zone review Byron Recreational Needs Analysis The structure plan should identify potential areas for future residential, commercial, industrial, open space, recreation and environmental protection purposes in	Byron Shire Council	Strategy work has commenced	\$ - Council

THEME	ACTION	WHO	WHEN	FUNDING
	Bangalow and indicative road and pathway connections.			
	3 Include the structure plan in the Bangalow Village Plan and Chapter E2 Bangalow of Byron Development Control Plan 2014, to guide integrated land-use planning and development outcomes in Bangalow.	Byron Shire Council	Medium-term	\$ - Council
2.3 Designed for Bangalow	1 Prepare development controls to include a Bangalow Vernacular Style Guide and associated development controls. Include design guidelines for low-rise medium-density development of various types (such as attached/detached townhouses and mews) and secondary dwellings, providing specific character guidelines for different locations in Bangalow.	Byron Shire Council (as part of Residential Strategy)	Residential Strategy has commenced	\$ - Council
Access and Movement				
3.1 Easy walking, safe cycling	1 Undertake intersection upgrades to establish pedestrian priority: <ul style="list-style-type: none"> at Byron Street and Station Street - see Fig. 1 Part A at Byron Street/Lismore Road/Granuaille Road roundabout. 	Byron Shire Council	Medium-term	\$\$ - Council
	2 Consider relocating the current pedestrian crossing to improve pedestrian safety. The community have expressed preference for the crossing to be located nearby the post office.	Byron Shire Council	Short-term	\$ - Council
	3 Install raised continuous footpath treatment across Station Lane and Market Street at Byron Street intersection. Consider formalising Station Lane and Market Street as shared zones - as the road reserve is not substantial for the installation of footpaths.	Byron Shire Council	Short-term	\$ - Council

THEME	ACTION	WHO	WHEN	FUNDING
	<p>4 Maintain and upgrade paths across the village to incorporate:</p> <ul style="list-style-type: none"> • consistent quality pavement • accessible ramps and tactile markings • wider footpaths and cycle paths. 	Byron Shire Council (associated with PAMP & Bike Plan)	Medium-term	\$\$ - Council
	<p>5 Design a walking and cycling network around Bangalow Village that includes linkage of open spaces, natural areas and parks, specifically providing new walk/cycle path connections between:</p> <ul style="list-style-type: none"> • showground and Corlis Crescent • showground and Hanlon Court • showground and sports fields, including bridge(s) across Byron Creek • along Raftons Road and Leslie Street west • along rail corridor from Rifle Range Road to the sports fields. 	Byron Shire Council (associated with PAMP & Bike Plan)	Medium-term	\$\$ - Council + potential grant funding
	<p>6 Provide a separated on street cycle path on Granuaille Road.</p>	Byron Shire Council (associated with PAMP & Bike Plan)	Medium-term	\$\$ - Council + potential grant funding
	<p>7 Install wayfinding signage to support pedestrians and cyclists to find their way around town.</p>	Byron Shire Council	Medium-term	\$ - Council
	<p>8 Investigate feasibility of public pedestrian connections through certain private property. This could be done through negotiation of voluntary planning agreements through the development approval process.</p>	Byron Shire Council & land owners	Medium-term	\$\$ - Council
	<p>9 Install end-of-trip facilities at key locations at active transport gateways and destinations</p>	Byron Shire Council (associated with	Medium-term	\$\$ - Council + potential

THEME	ACTION	WHO	WHEN	FUNDING	
	in the village centre.	PAMP & Bike Plan)		grant funding	
3.2 Vehicles don't dominate, people do	1	Plan and implement village centre streetscape improvements to deliver widened footpaths, narrower travel lanes (including edge friction and on-street parking configurations), intersection buildouts, street furniture, and landscaping in the following streets: <ul style="list-style-type: none"> • Byron Street from Granuaille Road to Station Street • Station Street (including gathering space in front of A&I Hall) • Byron Bay Road (from Bowlo into Village Centre) • Granuaille Road • Deacon Street from Lismore Road to Station Street. 	Byron Shire Council	Long-term	\$\$ - Council
	2	Ensure any future streetscape works in Byron Street or Station Street include accessible parking provision as close to the central part of the village as possible.	Byron Shire Council	Medium-term	\$ - Council
	3	Change speed limit to 30km/h on Byron Street, Station Street and part of Deacon Street.	Byron Shire Council	Short-term	\$ - Council
	4	Install signage to direct drivers to peripheral parking locations such as the carpark at Station Street South and on- street angle parking along Deacon Street.	Byron Shire Council	Short-term	\$ - Council
	5	Develop planning controls that: <ul style="list-style-type: none"> • encourage a diverse mix of high quality housing forms in a walkable catchment to the village centre 	Byron Shire Council (partly associated with Residential Strategy)	Short-term	\$ - Council

THEME	ACTION	WHO	WHEN	FUNDING
	<ul style="list-style-type: none"> • contain future development within the village centre's 20-minute walkable catchment • encourage activation of footpath spaces with uses such as footpath dining etc. • review the idea of minimum carparking requirements for development in the village centre. 			
	6 Monitor performance of Byron Street and Station Street time-limited parking with further reviews of parking regulatory mechanisms to reduce car dominance in the village centre.	Byron Shire Council	Shire-wide parking review commenced	\$ - Council
	7 Develop peripheral parking in walking distance to the village centre.	Byron Shire Council	Medium-term	\$\$ - Council
3.3 Shared sustainable transport	1 Construct school bus stop and shelter facilities at the Lismore Road/Rifle Range Road intersection.	Byron Shire Council & RMS	Short-term	\$\$ - Council
	2 Relocate existing public bus stops in the village centre to a consolidated bus stop on Byron Street close to the public school. An all-weather heritage-style shelter should be constructed for this stop and could provide an opportunity to incorporate artwork recognising Bundjalung history.	Byron Shire Council & Arakwal Corp	Short-term	\$\$ - Council
	3 Investigate feasibility of on-demand public transport services in partnership with the state government and private transport providers.	Byron Shire Council, Transport for NSW, bus companies	Long-term	\$\$ - Council, State Government
	4 Develop shire-wide car/ride share policy which includes options for a scheme in Bangalow.	Byron Shire Council + private car share provider	Short-term (trial underway in Byron Bay)	\$ - Council

THEME	ACTION	WHO	WHEN	FUNDING	
	5	Pursue initiatives and grants to install electric vehicle charging station in Bangalow village centre.	Byron Shire Council + community	Short-term	Potential business sponsorship
	6	Investigate feasibility of reinstating a rail service linking Bangalow to Byron Bay and further north, including multi-use of the rail corridor to include a cycle path.	Byron Council + State Government	Feasibility study completed June 2019	\$\$\$ - State Gov; Council; grants; sponsorship
Natural Environment and Sustainability					
4.1 Green corridors	1	Mapping of high environmental value (HEV) vegetation.	Byron Shire Council	Completed	No funding needed
	2	Protection of HEV vegetation through environmental zoning and preparation of vegetation management plans for individual properties.	Byron Shire Council	E-zone review commenced	No additional funding needed
	3	Continue to support the work of Bangalow Land & Rivercare in restoring bushland in high-priority areas. Improve Council maintenance (bush regeneration) to better support their work	Byron Shire Council	Ongoing	No funding needed
4.2 Sustainable built environment	1	Prepare guidelines for sustainable landscaping and garden design in Byron Shire, including lists of endemic plant species suitable for home gardens as a guide for developers and residents.	Byron Shire Council	Long-term	\$ - Council
	2	Prepare 'Byron Shire Water Sensitive Urban Design Guidelines' to guide sustainable stormwater management in future subdivision and infill developments.	Byron Shire Council	Underway	No additional funding needed
	3	Include water sensitive urban design measures in all public building and streetscape upgrades in the village centre and new peripheral carparking areas.	Byron Shire Council	Short-term	No additional funding needed

THEME	ACTION	WHO	WHEN	FUNDING	
	4	Enable, promote and protect food production in the village and surrounding region, including a community garden and edible planting in the village centre.	Byron Shire Council + community stakeholders	Short-term	\$ - potential sponsorship and/or grant funding
4.3 Toward zero emissions	1	Replace existing street lighting with energy efficient LED lights when upgrading the village core in accordance with initiative 1, strategy 1.2 'Active Centre'.	CountryEnergy + Byron Shire Council	Medium-term	\$ - potential sponsorship and/or grant funding
	2	Develop an emissions reduction strategy that maps a path for future action to reduce emissions from Council operations and support the Byron Shire Community zero net emissions target.	Byron Shire Council	Underway	No additional funding needed
	3	Implement the Northern Rivers Electric Vehicle Strategy.	Byron Shire Council	Underway	No additional funding needed
	5	Support local sustainability initiatives	Byron Shire Council + community	Ongoing	No additional funding needed
Culture and Sociability					
5.1 Cultural expression in the public realm	1	Partner with Bundjalung communities in the development of all place-making projects.	Arakwal Corp + Byron Shire Council + Community	Ongoing	No additional funding needed
	2	Design in public art as part of precinct master planning and detailed design of key sites in the town centre. Allocate a percentage of project budgets for development of artworks. Undertake design development of artworks as an integrated part of project planning and implementation stages	Byron Shire Council	Medium-term	No additional funding needed

THEME	ACTION	WHO	WHEN	FUNDING
	3 Prepare guidelines for artwork on private property in prominent locations. The following are opportunities: <ul style="list-style-type: none"> bottle shop wall archways – potential community art project involving primary school students Fire Station Park – mural on newsagency wall could be temporary and changing. 	Byron Shire Council + community	Short term	No additional funding needed
	4 Develop an annual temporary art installation event for Bangalow similar to Swell at Currumbin or Sculpture by the Sea at Bondi.	Chamber of Commerce, community	Short-term	Sponsorship + potential grant funding
	5 Develop heritage trails/walks and supporting resources with supporting maps, interpretive signage and downloadable apps. Bundjalung communities are to be involved as partners in telling the stories of Bangalow.	Chamber of Commerce, community, Council, Arakwal Corp	Medium-term	Sponsorship + potential grant funding
	6 Support the community in planning for community spaces and activities.	Chamber of Commerce, community	Short-term	Sponsorship + potential grant funding
	7 Assist local community groups in initiating programs/training to engage local youth.	Chamber of Commerce, community	Short-term	Sponsorship + potential grant funding
Shopping and Business				
6.1 Servicing the local community	1 Support the Bangalow Farmers Market and monthly Artisan Market as important points of sale/ distribution that help reduce food miles, maintain food security and build a self-sufficient and resilient community.	Chamber of Commerce, community, Byron Shire Council	Ongoing	No additional funding needed
	2 Develop and implement a ‘buy local’	Chamber of	Short-term	Sponsorship

THEME	ACTION	WHO	WHEN	FUNDING
	campaign and other initiatives to support a circular economy (e.g. introduce a discount card for locals; establish a community retail space for goods made in Bangalow).	commerce		+ potential grant funding
	3 Encourage Bangalow's boutiques to also stock affordable essentials for locals.	Chamber of commerce	Short-term	No funding required
	4 Implement planning strategies that will enable and encourage more people to live and work in the village centre to generate additional demand for goods and services.	Byron Shire Council with significant community stakeholder input	Long-term	\$ - Council
6.2 Heritage character supports the economy	1 Encourage new mixed use developments in the village centre to provide a diversity of business accommodation options.	Byron Shire Council with significant community stakeholder input	Long-term	\$ - Council
	2 Develop the Bangalow brand, business networking, and collaborative marketing opportunities.	Chamber of commerce	Short-term	Sponsorship + potential grant funding
	3 Encourage e-workers and a smart, connected village environment through initiatives such as installing free wi-fi and device charging stations in cafes and public spaces and development of flexible co-working and meeting spaces.	Chamber of commerce	Short-term	Sponsorship + potential grant funding
6.3 Culture, creative arts and design	1 Engage a centre manager to coordinate and develop the program of shows and events that are held in Bangalow to: <ul style="list-style-type: none"> • provide a year-round program • activate the night-time economy • ensure all shows and events are in keeping with and help to develop the 'Bangalow brand' 	Chamber of commerce	Medium-term	Sponsorship + potential grant funding
	2 Develop a 'What's on in Bangalow?' website	Chamber of	Short-term	Sponsorship

<i>THEME</i>	<i>ACTION</i>	<i>WHO</i>	<i>WHEN</i>	<i>FUNDING</i>
	so people can find out what's on, plan ahead and book tickets.	commerce		+ potential grant funding

