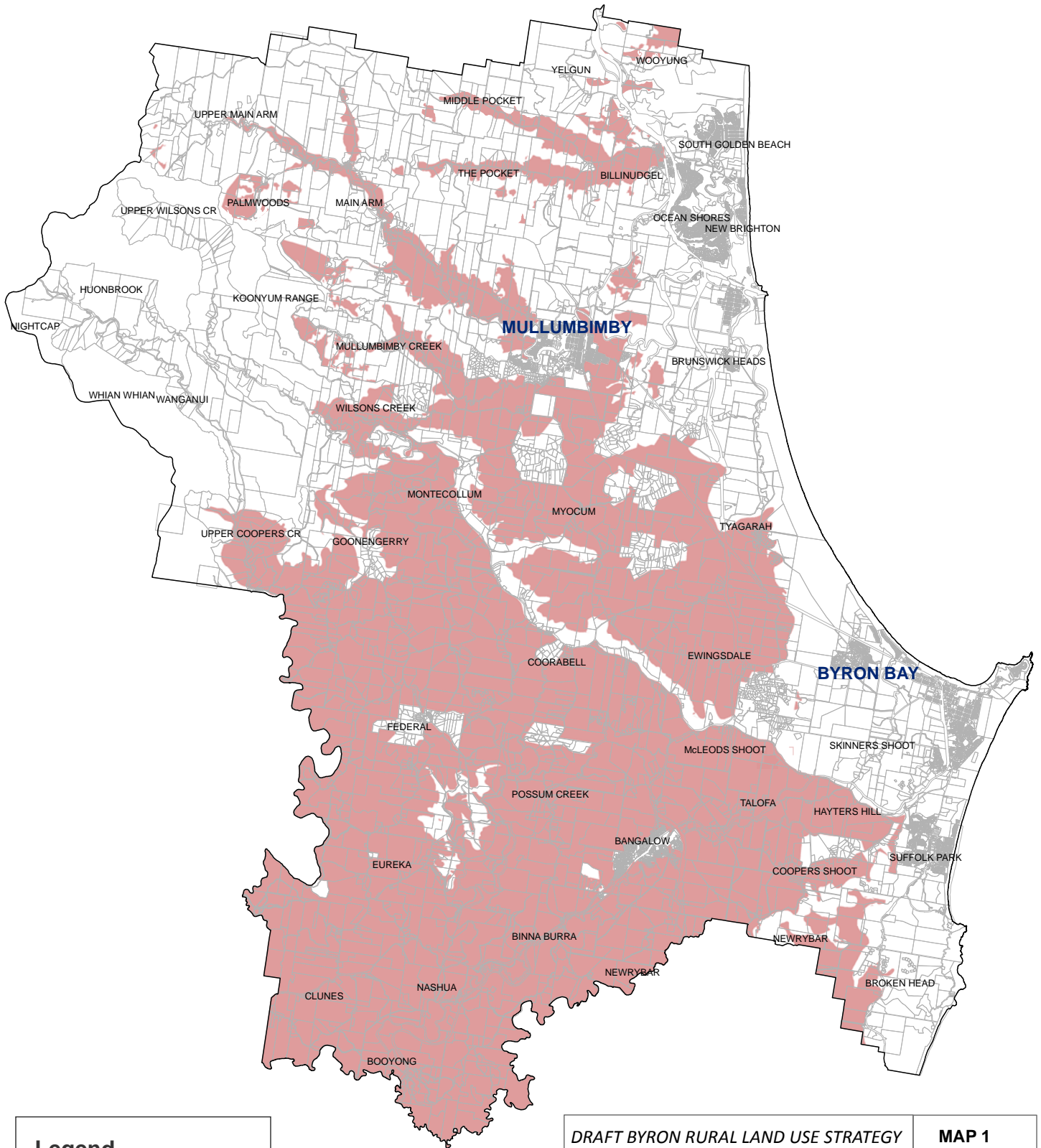


CONSTRAINED LAND: 'Primary Production Land'



Legend

- Shire Boundary
- Land Parcels
- Primary Production Land

DRAFT BYRON RURAL LAND USE STRATEGY	MAP 1
State & Regionally Significant Farmland (excluding non-contiguous)	
OR	
High Quality Agricultural Land zoned RU1 Primary Production in LEP 2014	
OR	
'Deferred' Land zoned 1(b1) or 1(b2) Agricultural Protection in LEP 1988	



Disclaimer : While all reasonable care has been taken to ensure the information contained on this map is up to date and accurate, no warranty is given that the information contained on this map is free from error or omission. Any reliance placed on such information shall be at the sole risk of the user. Please verify the accuracy of the information prior to using it. Note : The information shown on this map is a copyright of the Byron Shire Council and the NSW Department of Lands.

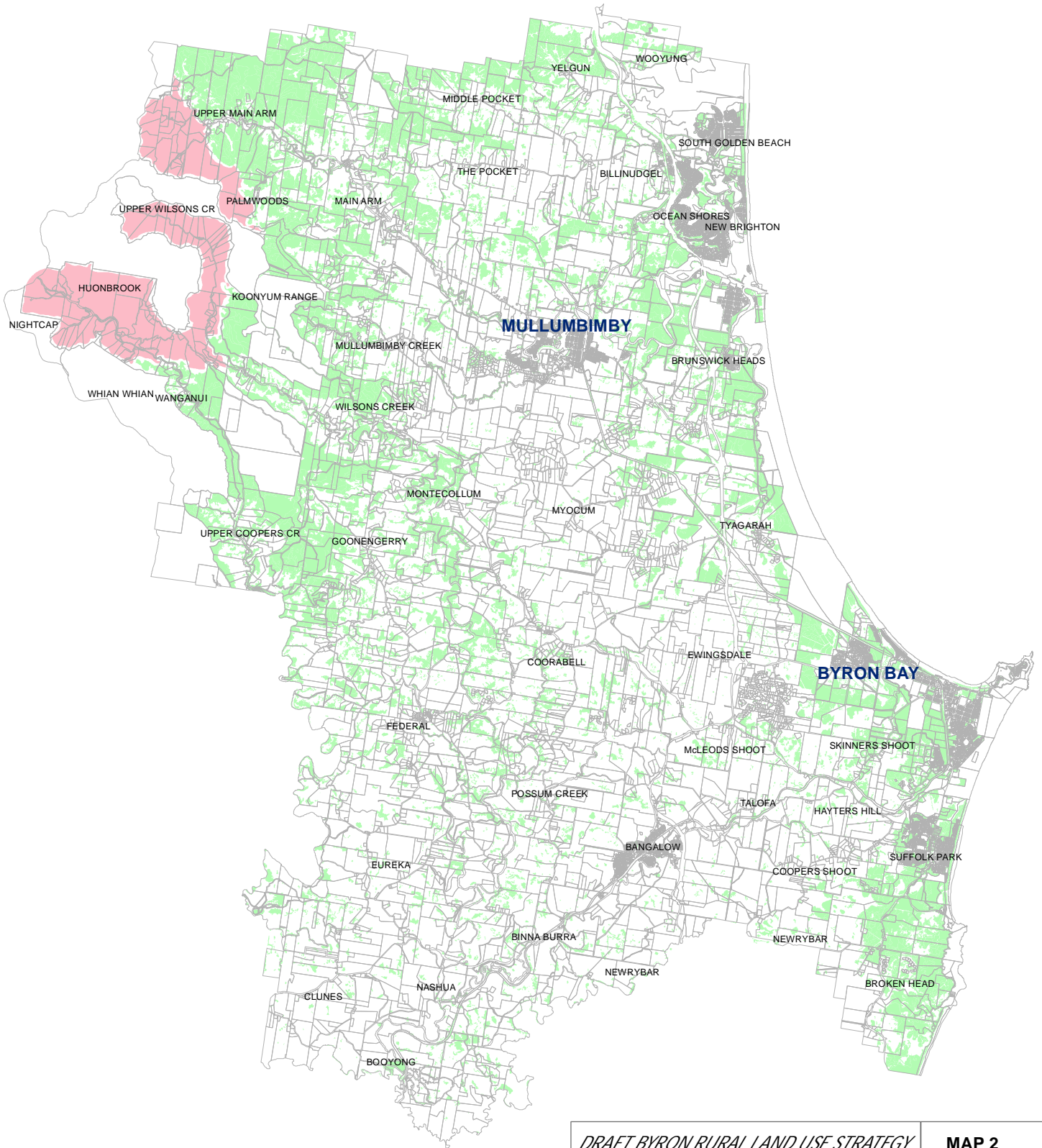
0 2.5 5 Kilometers

1:160,000 @ A4 size



Date: 11/12/2015

CONSTRAINED LAND: 'High Environmental Value Vegetation'



<i>DRAFT BYRON RURAL LAND USE STRATEGY</i>	MAP 2
Land containing high environmental value vegetation incorporating:	
<ul style="list-style-type: none"> • Areas protected for conservation • Native vegetation of high conservation value • Threatened species and populations • Wetlands, rivers, estuaries and coastal features of high environmental value 	

Legend

- Land Parcels
- High Environmental Value Vegetation**
 - Classified in accordance with OEH methodology
 - Unclassified (awaiting completion of updated vegetation mapping)



Disclaimer : While all reasonable care has been taken to ensure the information contained on this map is up to date and accurate, no warranty is given that the information contained on this map is free from error or omission. Any reliance placed on such information shall be at the sole risk of the user. Please verify the accuracy of the information prior to using it. Note : The information shown on this map is a copyright of the Byron Shire Council and the NSW Department of Lands.

0 2.5 5 Kilometers

1:160,000 @ A4 size

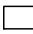




Date: 5/04/2017

CONSTRAINED LAND: 'Water Supply Catchment Buffers'



Legend

-  Shire Boundary
-  Land Parcels
-  100m river buffer within a Drinking Water Catchment

DRAFT BYRON RURAL LAND USE STRATEGY	MAP 3
<p><i>Land within 100m of a major creek / waterway located in a Drinking Water Catchment</i></p>	



Disclaimer : While all reasonable care has been taken to ensure the information contained on this map is up to date and accurate, no warranty is given that the information contained on this map is free from error or omission. Any reliance placed on such information shall be at the sole risk of the user. Please verify the accuracy of the information prior to using it. Note : The information shown on this map is a copyright of the Byron Shire Council and the NSW Department of Lands.

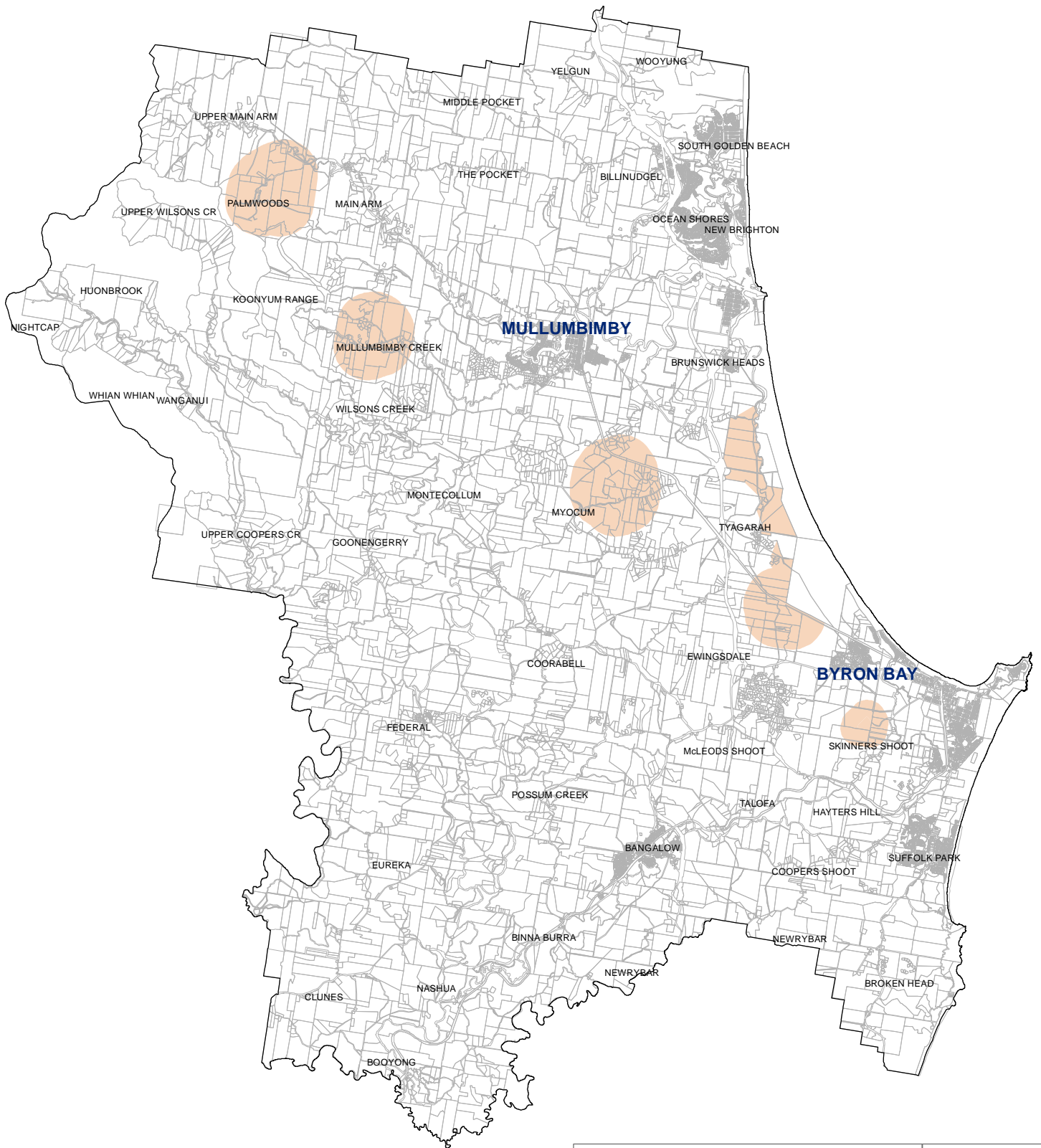
0 2.5 5 Kilometers

1:160,000 @ A4 size

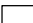




Date: 17/11/2015

CONSTRAINED LAND: 'Mineral Resources'



Legend

-  Shire Boundary
-  Land Parcels
-  S117 Mineral Resource Lands

<i>DRAFT BYRON RURAL LAND USE STRATEGY</i>	MAP 4
<i>Mineral Resource Lands affected by Section 117(2)</i>	
<i>Direction 1.3 – Mining, Petroleum Production and Extractive Industries</i>	



Disclaimer : While all reasonable care has been taken to ensure the information contained on this map is up to date and accurate, no warranty is given that the information contained on this map is free from error or omission. Any reliance placed on such information shall be at the sole risk of the user. Please verify the accuracy of the information prior to using it. Note : The information shown on this map is a copyright of the Byron Shire Council and the NSW Department of Lands.

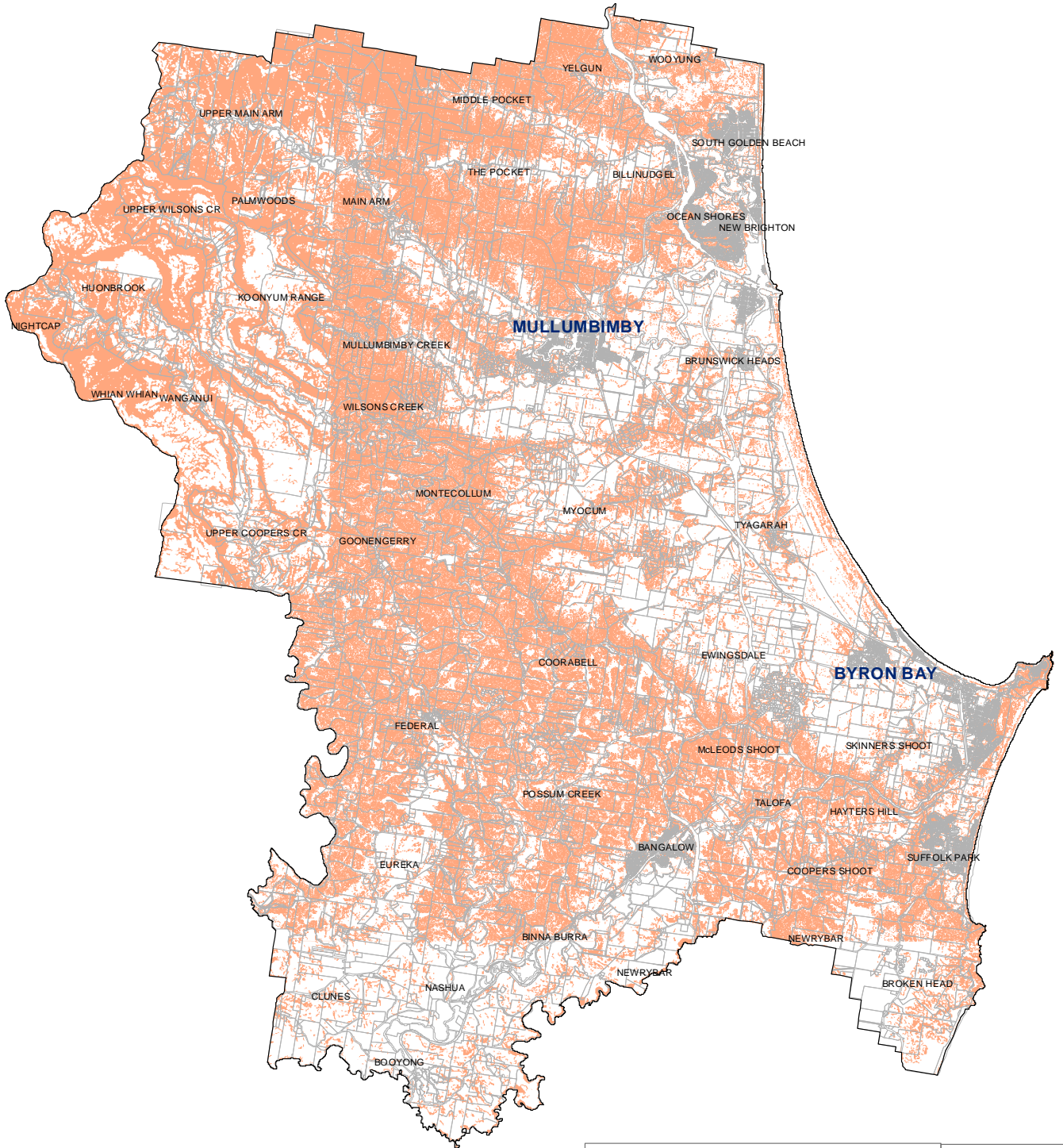
0 2.5 5 Kilometers

1:160,000 @ A4 size



Date: 5/04/2017

CONSTRAINED LAND: 'Slope greater than 25% (14 degrees)'



Legend

- Shire Boundary
- Land Parcels
- Land having > 25% (14 degrees) slope

DRAFT BYRON RURAL LAND USE STRATEGY **MAP 5**

Slope (greater than 25%) Constraint



Disclaimer : While all reasonable care has been taken to ensure the information contained on this map is up to date and accurate, no warranty is given that the information contained on this map is free from error or omission. Any reliance placed on such information shall be at the sole risk of the user. Please verify the accuracy of the information prior to using it.
 Note : The information shown on this map is a copyright of the Byron Shire Council and the NSW Department of Lands.

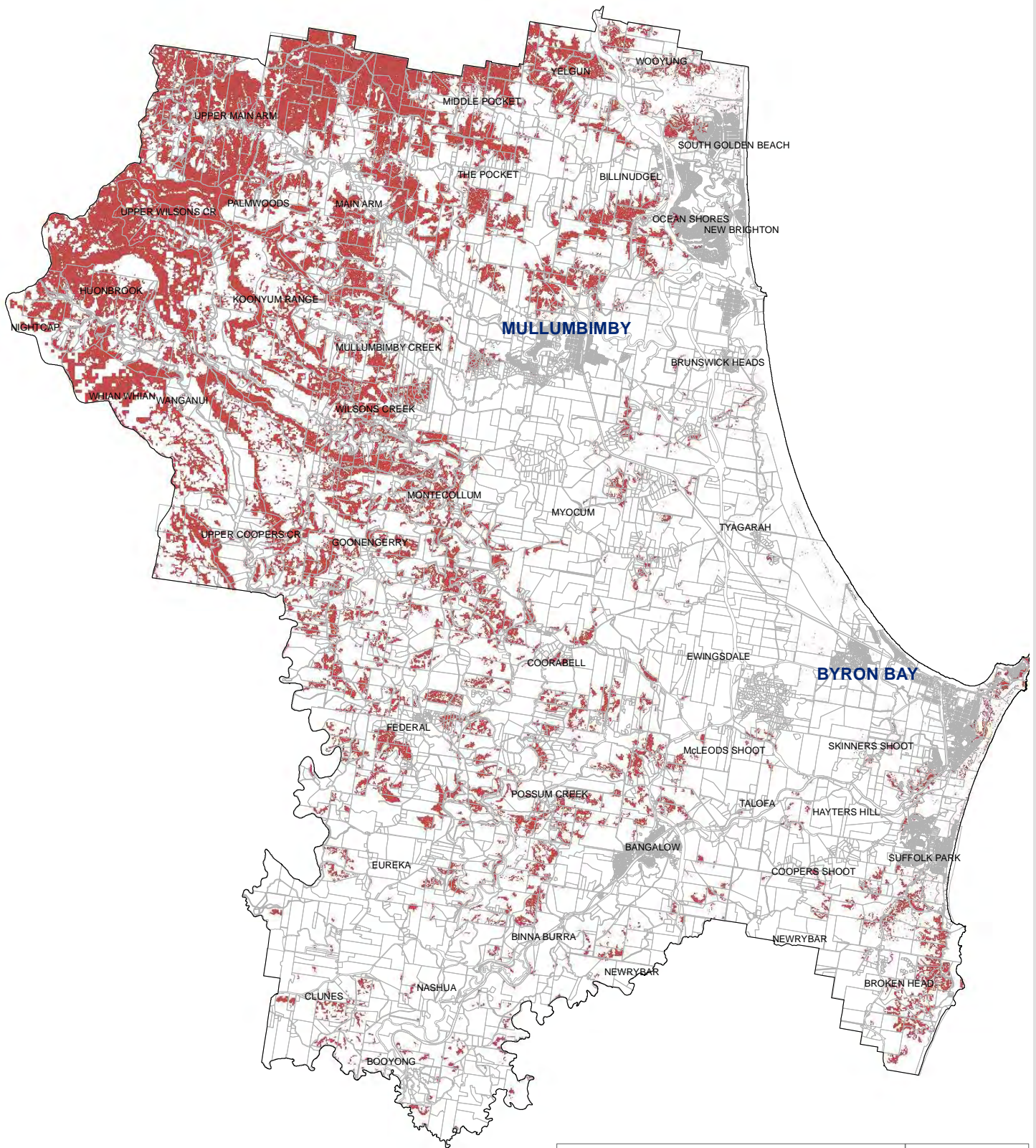
0 2.5 5 Kilometers

1:160,000 @ A4 size



Date: 5/04/2017

CONSTRAINED LAND: 'Extreme Bushfire Risk'



Legend

-  Shire Boundary
-  Land Parcels
-  Extreme bushfire risk

DRAFT BYRON RURAL LAND USE STRATEGY **MAP 6**

*Land containing Bushfire Category 1 vegetation
and
Slope >20% (11.3 degrees)*



Disclaimer : While all reasonable care has been taken to ensure the information contained on this map is up to date and accurate, no warranty is given that the information contained on this map is free from error or omission. Any reliance placed on such information shall be at the sole risk of the user. Please verify the accuracy of the information prior to using it. Note : The information shown on this map is a copyright of the Byron Shire Council and the NSW Department of Lands.

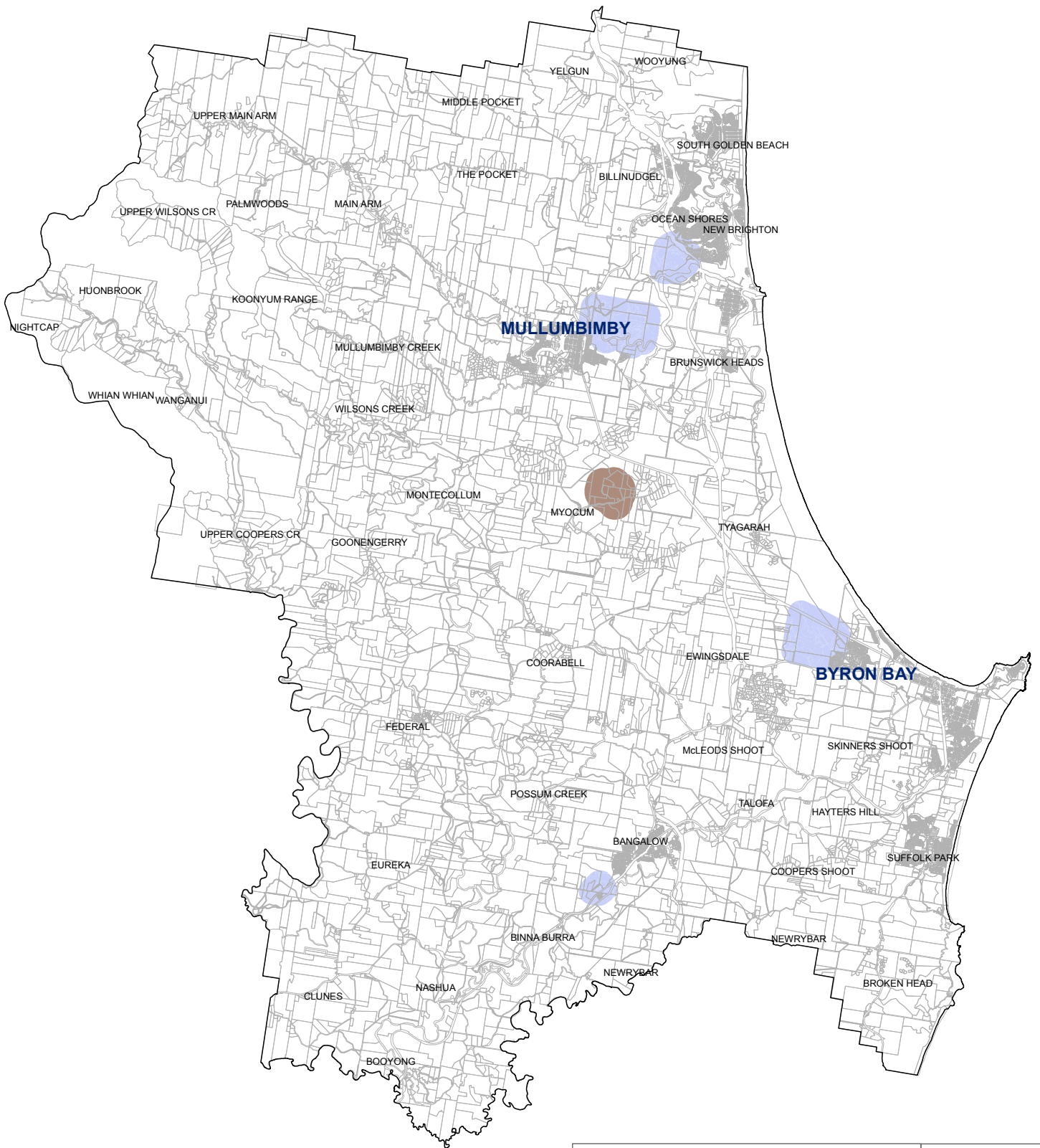
0 2.5 5 Kilometers

1:160,000 @ A4 size







Date: 6/04/2017

CONSTRAINED LAND: 'Buffers to waste disposal facilities and sewage treatment plants'



Legend

-  Shire Boundary
-  Land Parcels
-  Sewage treatment plant buffer (400m)
-  Waste disposal facility buffer (500m)

DRAFT BYRON RURAL LAND USE STRATEGY	MAP 7
<p><i>Land within buffer to sewage treatment plant (400m)</i></p> <p>OR</p> <p><i>waste disposal facility (500m)</i></p>	



Disclaimer : While all reasonable care has been taken to ensure the information contained on this map is up to date and accurate, no warranty is given that the information contained on this map is free from error or omission. Any reliance placed on such information shall be at the sole risk of the user. Please verify the accuracy of the information prior to using it. Note : The information shown on this map is a copyright of the Byron Shire Council and the NSW Department of Lands.

0 2.5 5 Kilometers

1:160,000 @ A4 size



Date: 17/11/2015