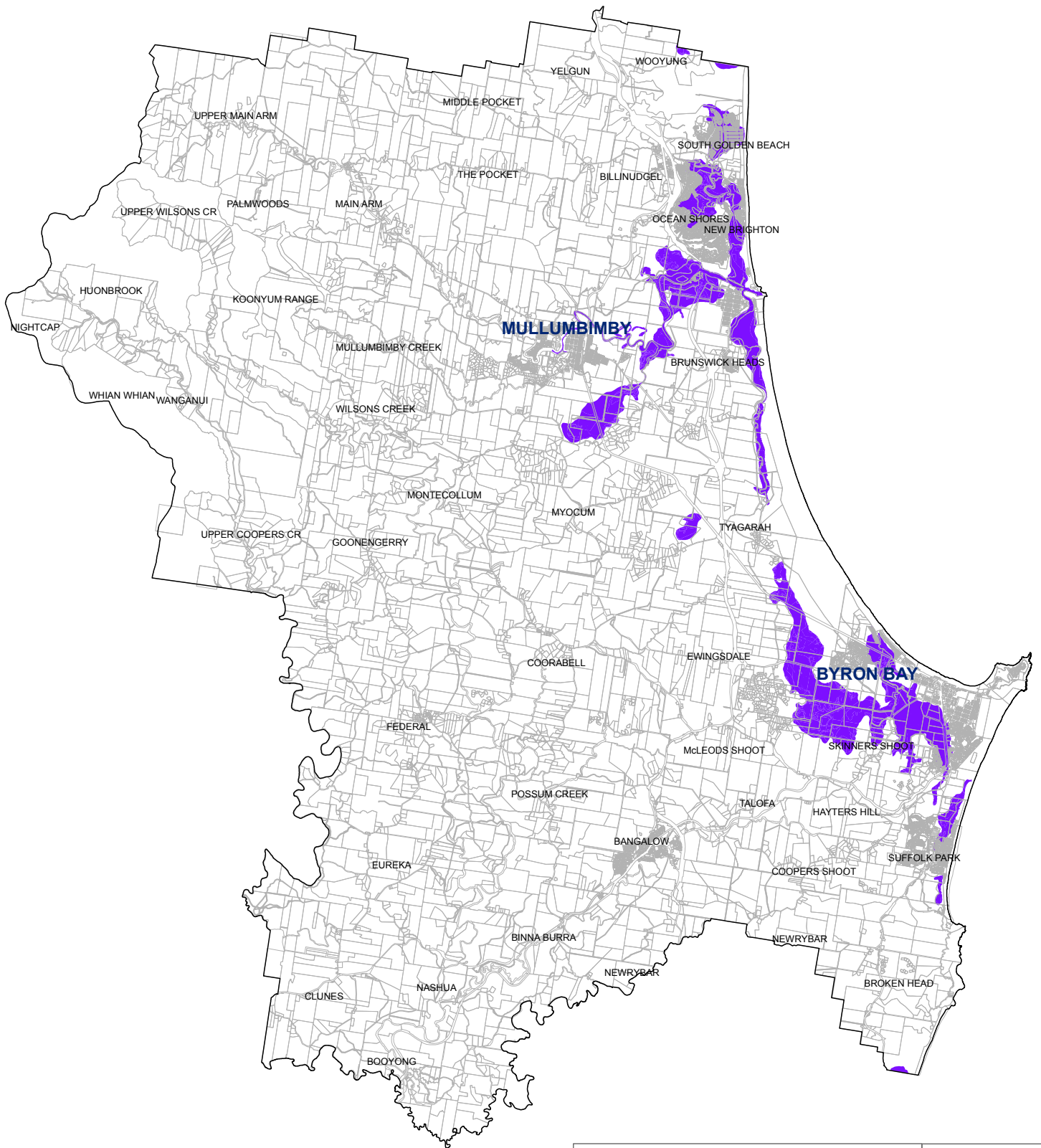


CONSTRAINED LAND: 'Acid Sulfate Soil High Risk Classes'



Legend

-  Shire Boundary
-  Land Parcels
-  High Risk Acid Sulfate Soils

<i>DRAFT BYRON RURAL LAND USE STRATEGY</i>	MAP 8
<i>Land within Acid Sulfate Soil Risk Class 1 or 2</i>	



Disclaimer : While all reasonable care has been taken to ensure the information contained on this map is up to date and accurate, no warranty is given that the information contained on this map is free from error or omission. Any reliance placed on such information shall be at the sole risk of the user. Please verify the accuracy of the information prior to using it. Note : The information shown on this map is a copyright of the Byron Shire Council and the NSW Department of Lands.

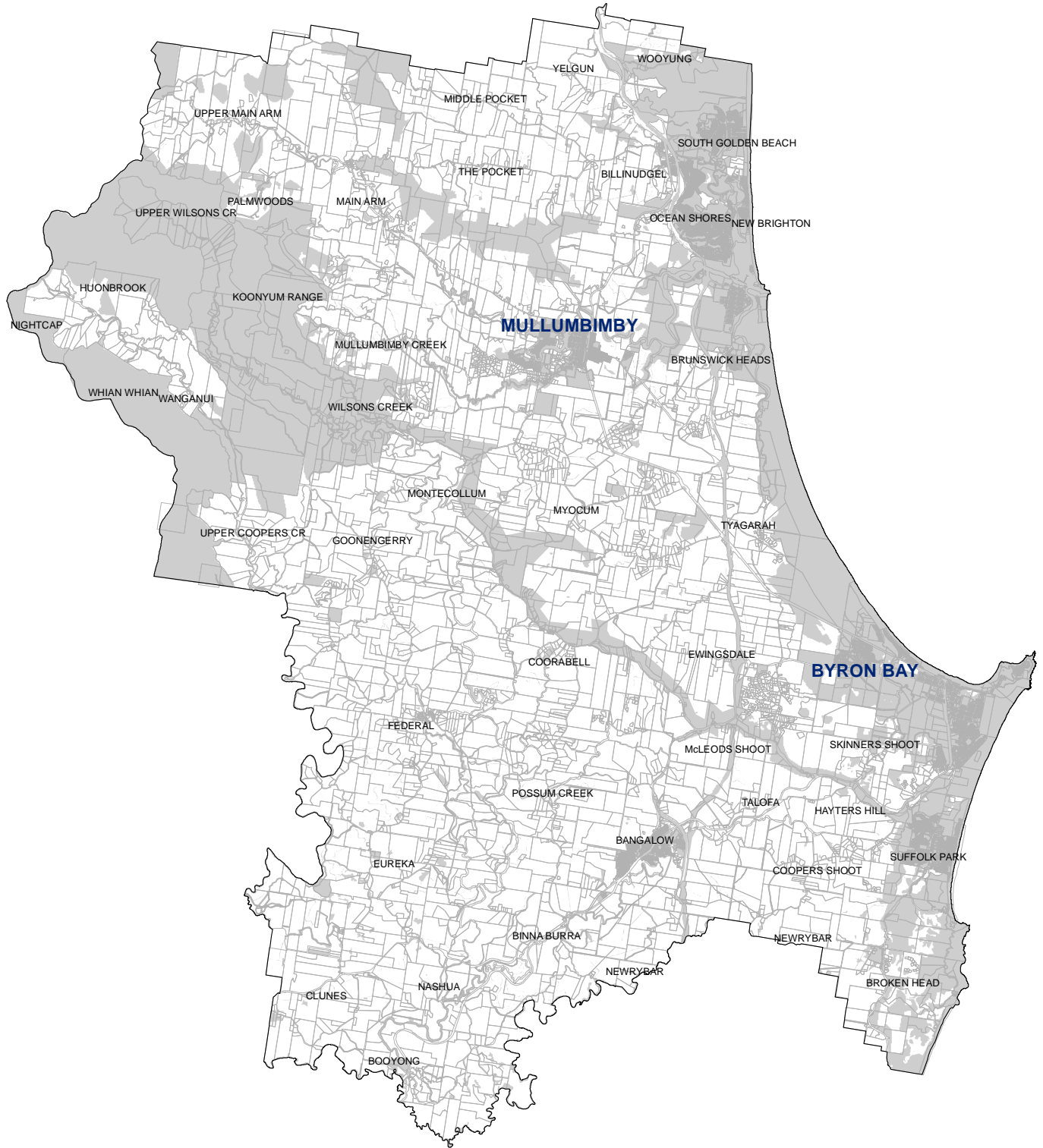
0 2.5 5 Kilometers

1:160,000 @ A4 size



Date: 17/11/2015

CONSTRAINED LAND: 'Excluded Zones'



Legend

- Shire Boundary
- Land Parcels
- 'Excluded Zone' constraint

DRAFT BYRON RURAL LAND USE STRATEGY **MAP 9**

Land situated outside the following zones in:

Byron LEP 2014: RU1 Primary Production; RU2 Rural Landscape; R5 Large Lot Residential; SP1 Special Activities and RU5 Village

AND

*Byron LEP 1988 (only where "deferred" from LEP 2014):
1(a) General Rural; 1(d) Investigation and 7(d) Scenic/Escarpment*



Disclaimer : While all reasonable care has been taken to ensure the information contained on this map is up to date and accurate, no warranty is given that the information contained on this map is free from error or omission. Any reliance placed on such information shall be at the sole risk of the user. Please verify the accuracy of the information prior to using it. Note : The information shown on this map is a copyright of the Byron Shire Council and the NSW Department of Lands.

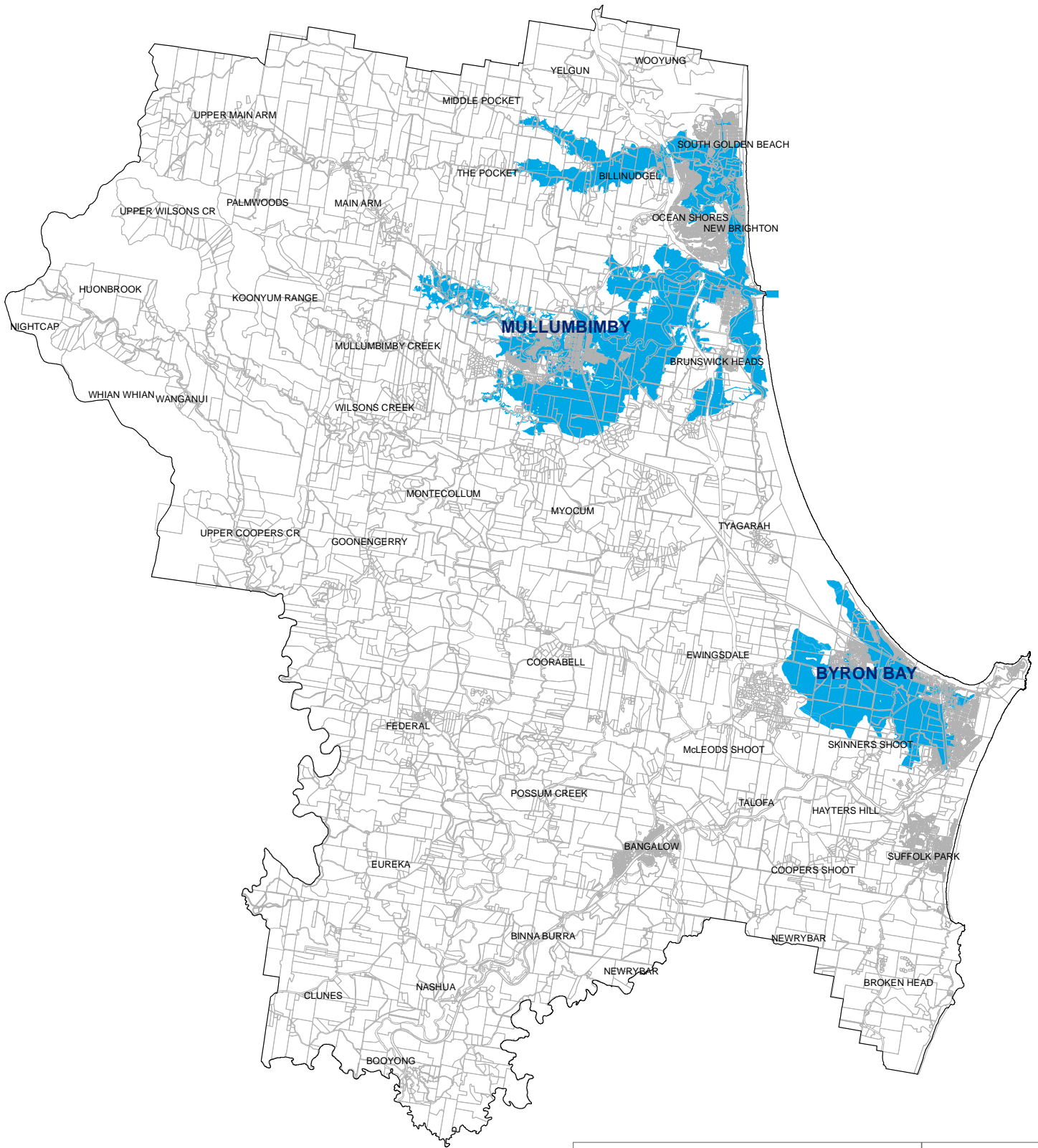
0 2.5 5 Kilometers

1:168,957 @ A4 size






Date: 31/03/2016

CONSTRAINED LAND: '1:100yr Flood or Climate Change risk'



Legend

-  Shire Boundary
-  Land Parcels
-  Flood Prone Land (constrained)

DRAFT BYRON RURAL LAND USE STRATEGY MAP 10

'Flood Prone' = 1:100 year ARI + Climate Change areas comprising:

- Land identified in the North Byron 100-year inundation mapping (2016);
- Belongil 100-year inundation mapping (2015); and
- West Byron flood planning area (2015)



Disclaimer : While all reasonable care has been taken to ensure the information contained on this map is up to date and accurate, no warranty is given that the information contained on this map is free from error or omission. Any reliance placed on such information shall be at the sole risk of the user. Please verify the accuracy of the information prior to using it. Note : The information shown on this map is a copyright of the Byron Shire Council and the NSW Department of Lands.

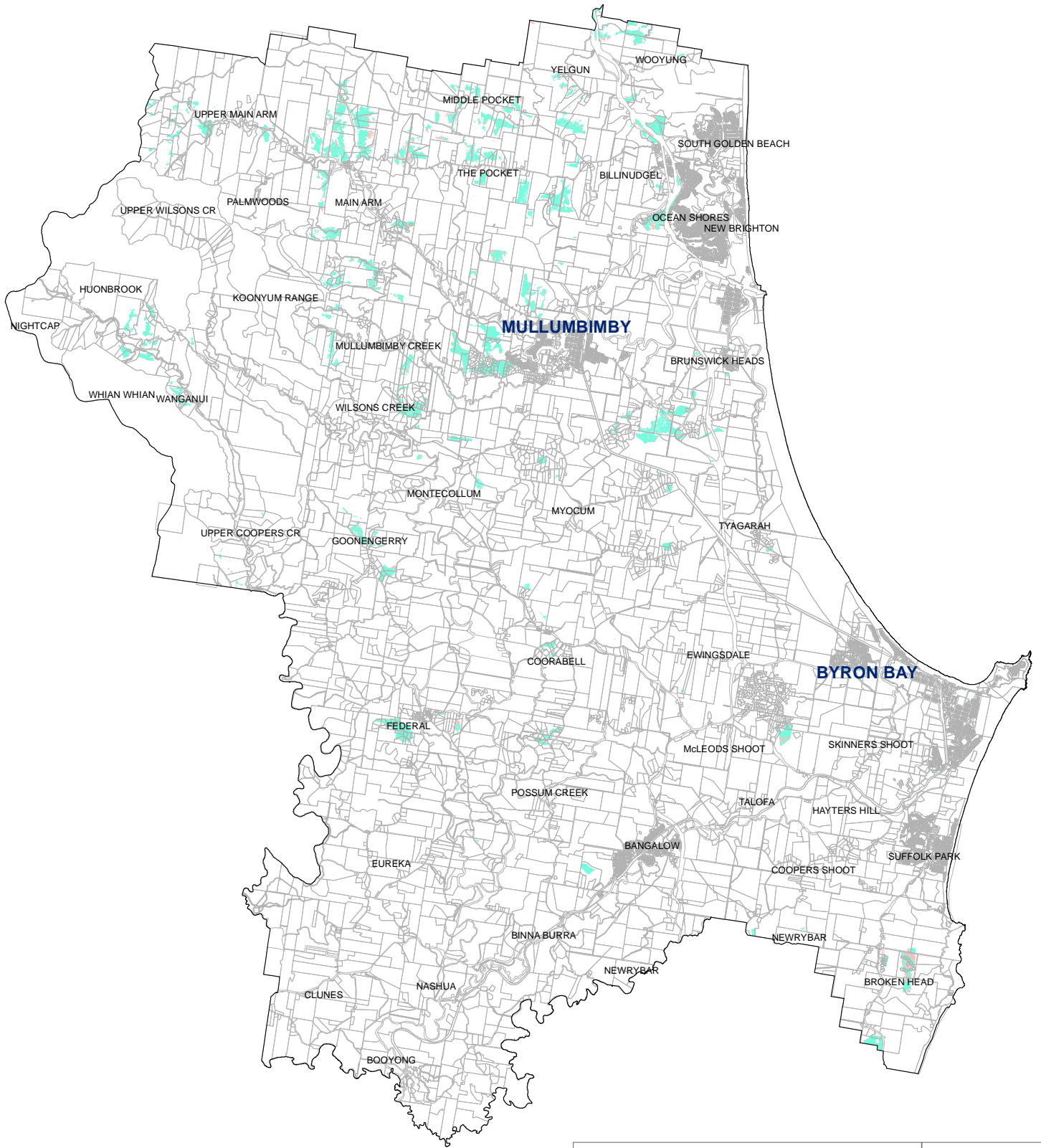
0 2.5 5 Kilometers

1:160,000 @ A4 size

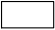
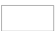



Date: 5/04/2017

UNCONSTRAINED LAND



Legend

-  Shire Boundary
-  Land Parcels
-  Wholly Unconstrained Land

DRAFT BYRON RURAL LAND USE STRATEGY

MAP 11

Land not affected by 'Constrained' (Table 1) or "Assessable" (Table 2) development constraints



Disclaimer : While all reasonable care has been taken to ensure the information contained on this map is up to date and accurate, no warranty is given that the information contained on this map is free from error or omission. Any reliance placed on such information shall be at the sole risk of the user. Please verify the accuracy of the information prior to using it. Note : The information shown on this map is a copyright of the Byron Shire Council and the NSW Department of Lands.

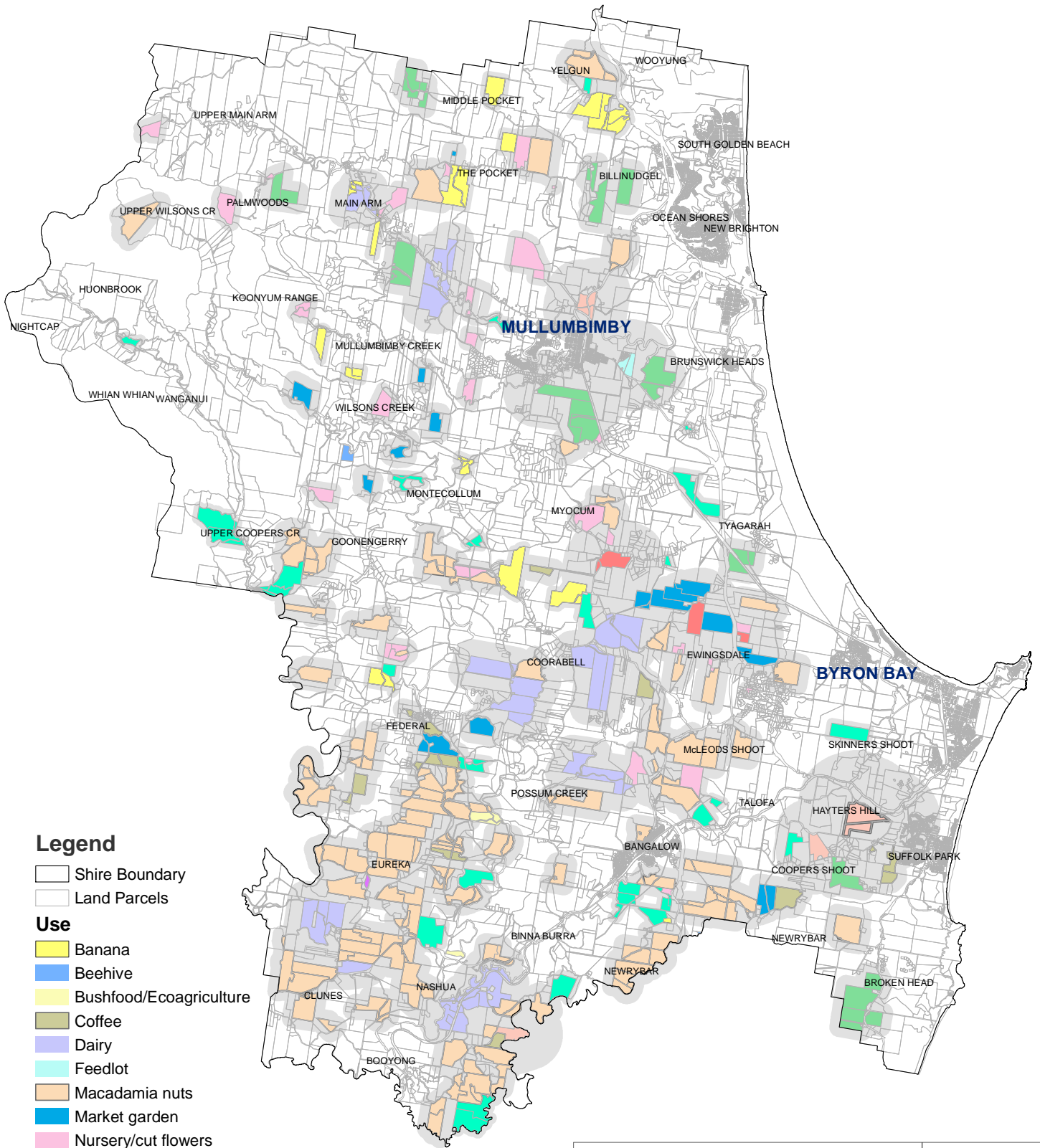
0 2.5 5 Kilometers

1:160,000 @ A4 size



Date: 5/04/2017

ASSESSABLE LAND: 'Sensitive Farmland-rated Uses and Recommended Buffers'



Legend

- Shire Boundary
- Land Parcels

Use

- Banana
- Beehive
- Bushfood/Ecoagriculture
- Coffee
- Dairy
- Feedlot
- Macadamia nuts
- Market garden
- Nursery/cut flowers
- Nursery/macadamia
- Orchard
- Piggery
- Poultry
- Poultry ('free range')
- Sugar cane
- Recommended buffer

DRAFT BYRON RURAL LAND USE STRATEGY

MAP 12

Excludes the following farmland-rated uses:

- 'Equestrian'
- 'Forestry/grazing'
- 'Forestry'
- 'Grazing'
- 'House/Hobby'
- 'Tourist/grazing'
- 'Turf/hay'



Disclaimer : While all reasonable care has been taken to ensure the information contained on this map is up to date and accurate, no warranty is given that the information contained on this map is free from error or omission. Any reliance placed on such information shall be at the sole risk of the user. Please verify the accuracy of the information prior to using it. Note : The information shown on this map is a copyright of the Byron Shire Council and the NSW Department of Lands.

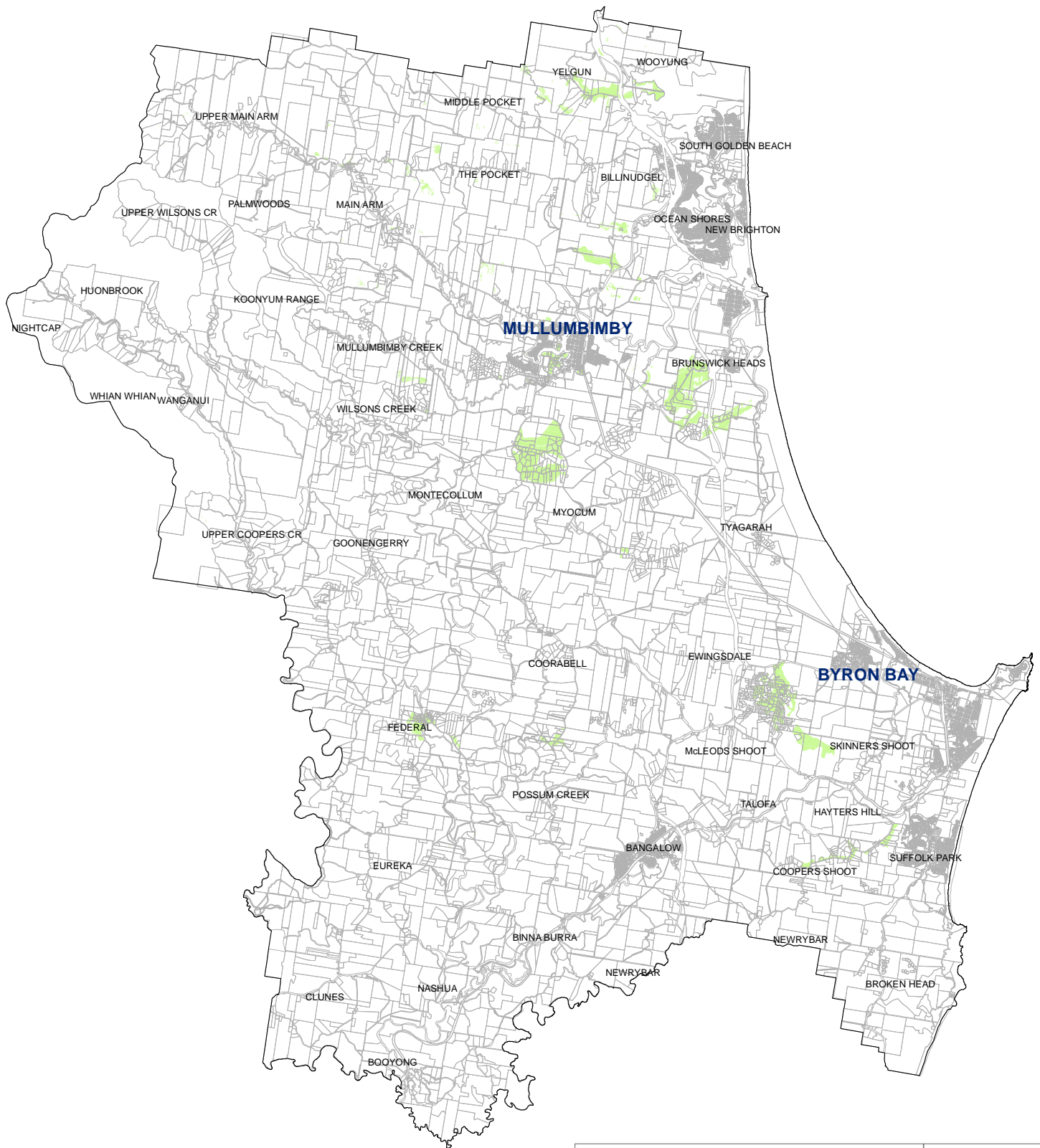
0 2.5 5 Kilometers

1:160,000 @ A4 size



Date: 5/04/2017

ASSESSABLE LAND: 'Non Contiguous State/Regionally Significant Farmland and/or Prime Agricultural Lands'



DRAFT BYRON RURAL LAND USE STRATEGY **MAP 13**
 Non-contiguous State/ Regionally Significant farmland
 AND/OR
 Prime Agricultural Land (classes 1, 2 and 3 as identified by NSW Agriculture) located outside the Primary Production Land identified in MAP 1

Legend

-  Shire Boundary
-  Land Parcels
-  Non-Contiguous State/Regionally Significant Farmland and/or Prime Ag Land



Disclaimer : While all reasonable care has been taken to ensure the information contained on this map is up to date and accurate, no warranty is given that the information contained on this map is free from error or omission. Any reliance placed on such information shall be at the sole risk of the user. Please verify the accuracy of the information prior to using it. Note : The information shown on this map is a copyright of the Byron Shire Council and the NSW Department of Lands.

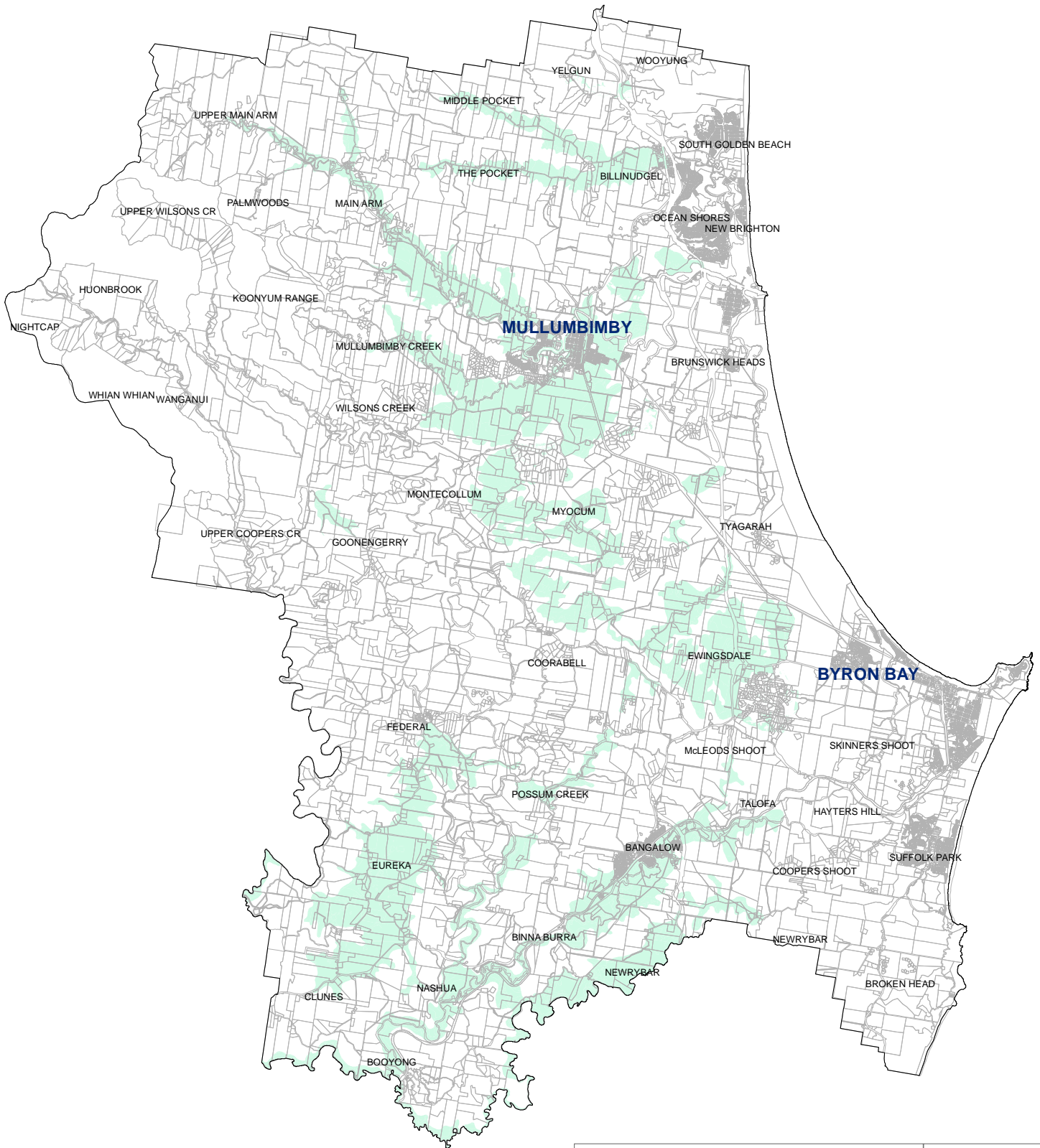
0 2.5 5 Kilometers

1:160,000 @ A4 size


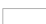
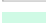


Date: 5/04/2017

ASSESSABLE LAND: 'Biophysical Strategic Agricultural Land' (BSAL)



Legend

-  Shire Boundary
-  Land Parcels
-  BSAL

DRAFT BYRON RURAL LAND USE STRATEGY

MAP 14

Biophysical Strategic Agricultural Land (BSAL)

= important for managing competing land uses proposed on high quality agricultural land



Disclaimer : While all reasonable care has been taken to ensure the information contained on this map is up to date and accurate, no warranty is given that the information contained on this map is free from error or omission. Any reliance placed on such information shall be at the sole risk of the user. Please verify the accuracy of the information prior to using it. Note : The information shown on this map is a copyright of the Byron Shire Council and the NSW Department of Lands.

0 2.5 5 Kilometers

1:160,000 @ A4 size



Date: 5/04/2017