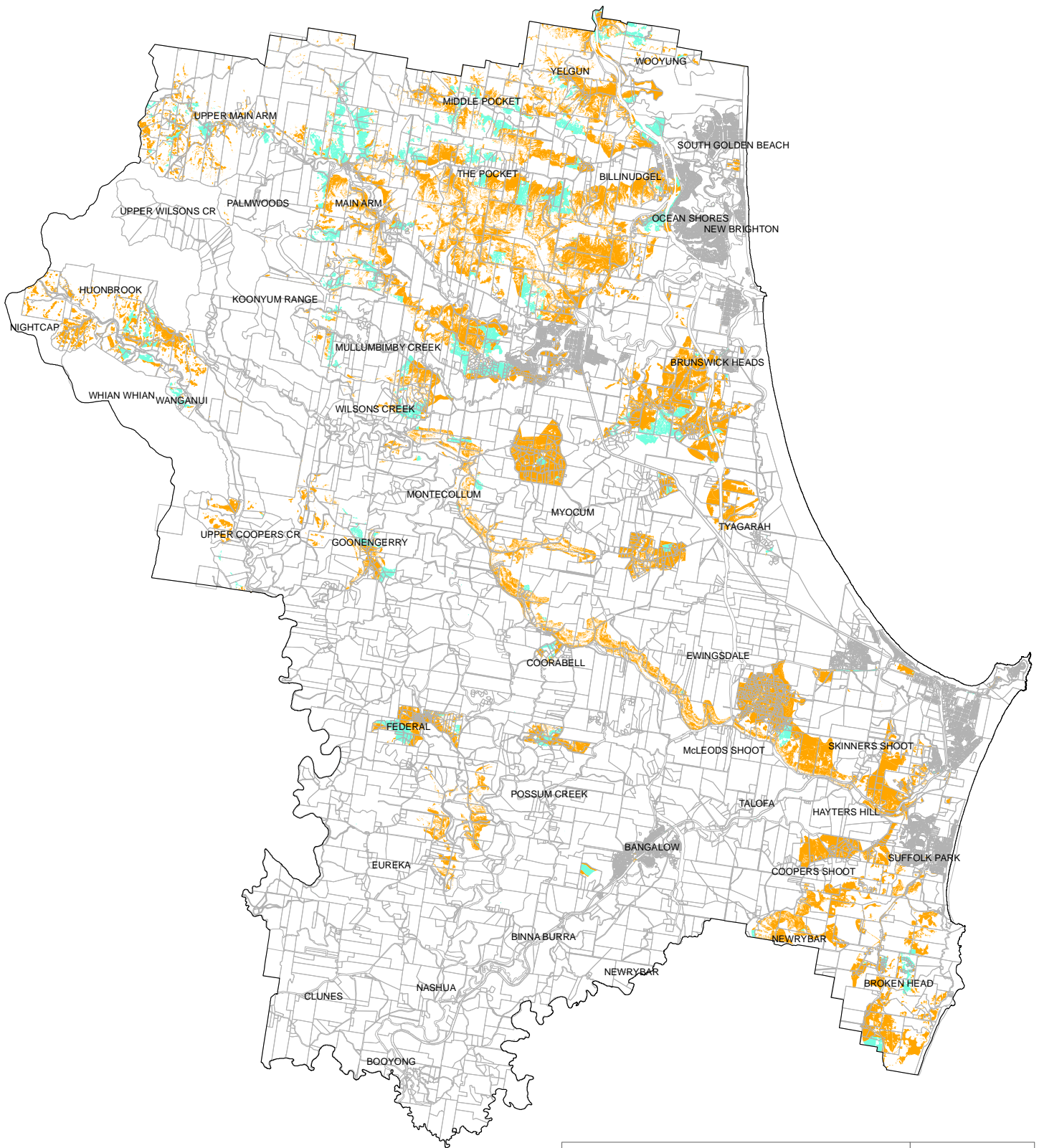


'UNCONSTRAINED' AND 'ASSESSABLE' RURAL DEVELOPMENT LAND







DRAFT BYRON RURAL LAND USE STRATEGY **MAP 20**

UNCONSTRAINED LAND = not affected by constraints identified in Table 1

AND

ASSESSABLE LAND = contains one or more constraints identified in Table 2

Legend

-  Shire Boundary
-  Land Parcels
-  Unconstrained Land
-  Assessable Rural Development Land



Disclaimer : While all reasonable care has been taken to ensure the information contained on this map is up to date and accurate, no warranty is given that the information contained on this map is free from error or omission. Any reliance placed on such information shall be at the sole risk of the user. Please verify the accuracy of the information prior to using it. Note : The information shown on this map is a copyright of the Byron Shire Council and the NSW Department of Lands.

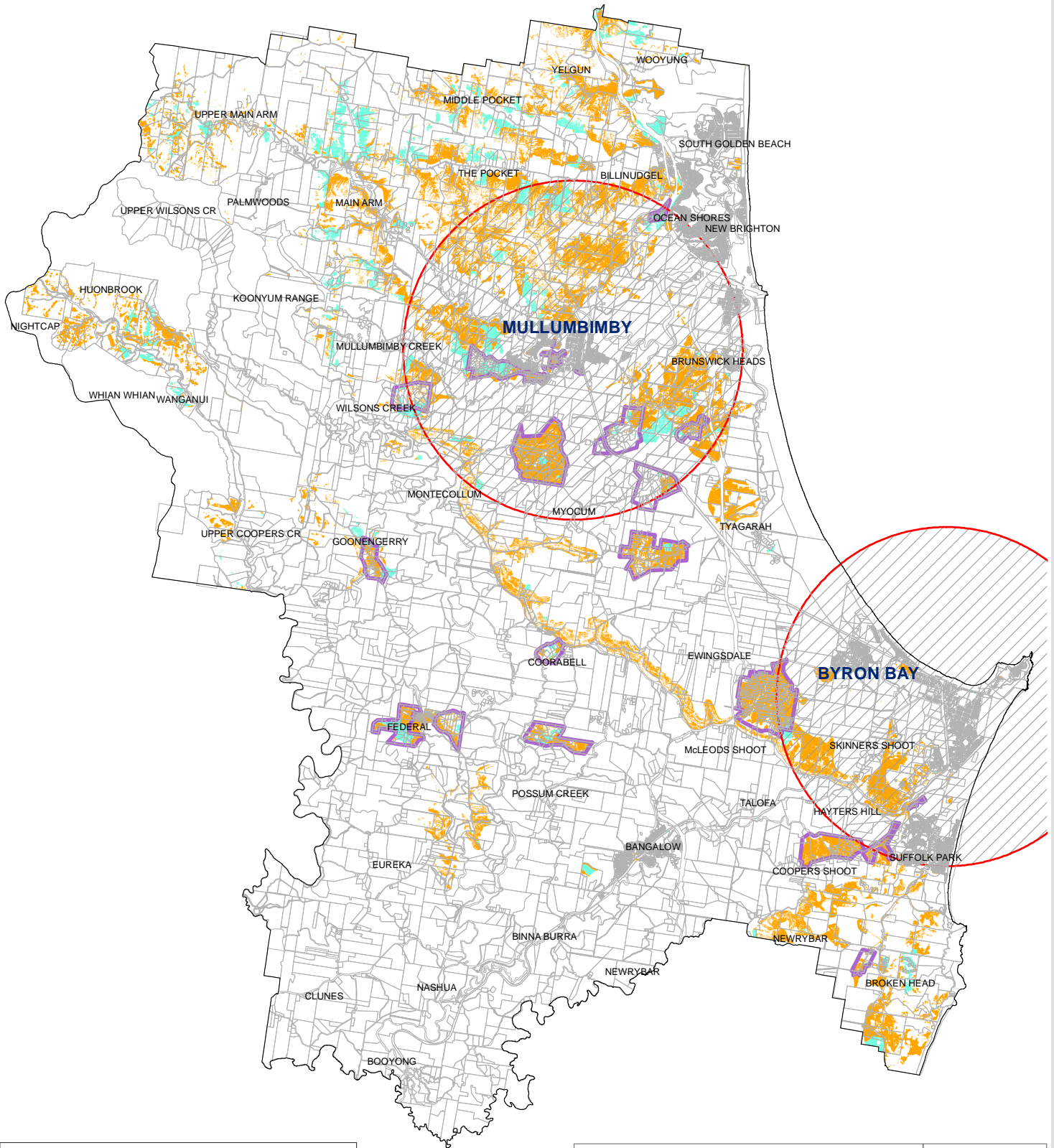
0 2.5 5 Kilometers

1:160,000 @ A4 size



Date: 5/04/2017

'UNCONSTRAINED' AND 'ASSESSABLE' RURAL DEVELOPMENT LAND WITHIN 5KM SERVICE CATCHMENTS



Legend

- Shire Boundary
- Land Parcels
- 5km service catchments
- Existing Rural Residential Zones
- Unconstrained Land
- Assessable Rural Development Land

DRAFT BYRON RURAL LAND USE STRATEGY

MAP 20A

UNCONSTRAINED LAND = not affected by constraints identified in Table 1, AND

ASSESSABLE LAND = contains one or more constraints identified in Table 2, AND

WITHIN 5km Service Catchments



Disclaimer : While all reasonable care has been taken to ensure the information contained on this map is up to date and accurate, no warranty is given that the information contained on this map is free from error or omission. Any reliance placed on such information shall be at the sole risk of the user. Please verify the accuracy of the information prior to using it. Note : The information shown on this map is a copyright of the Byron Shire Council and the NSW Department of Lands.

0 2.5 5 Kilometers

1:160,000 @ A4 size



Date: 5/04/2017