

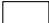


ASSESSABLE LAND: 'Scenic Amenity and Rural Landscape'



DRAFT BYRON RURAL LAND USE STRATEGY **MAP 15**

*Land zoned 7(d) Scenic/ Escarpment in Byron LEP 1998
(where "deferred" from LEP 2014)*

Legend

-  Shire Boundary
-  Land Parcels
-  Land zoned 7(d) Scenic/ Escarpment in Byron LEP 1998



Disclaimer : While all reasonable care has been taken to ensure the information contained on this map is up to date and accurate, no warranty is given that the information contained on this map is free from error or omission. Any reliance placed on such information shall be at the sole risk of the user. Please verify the accuracy of the information prior to using it. Note : The information shown on this map is a copyright of the Byron Shire Council and the NSW Department of Lands.

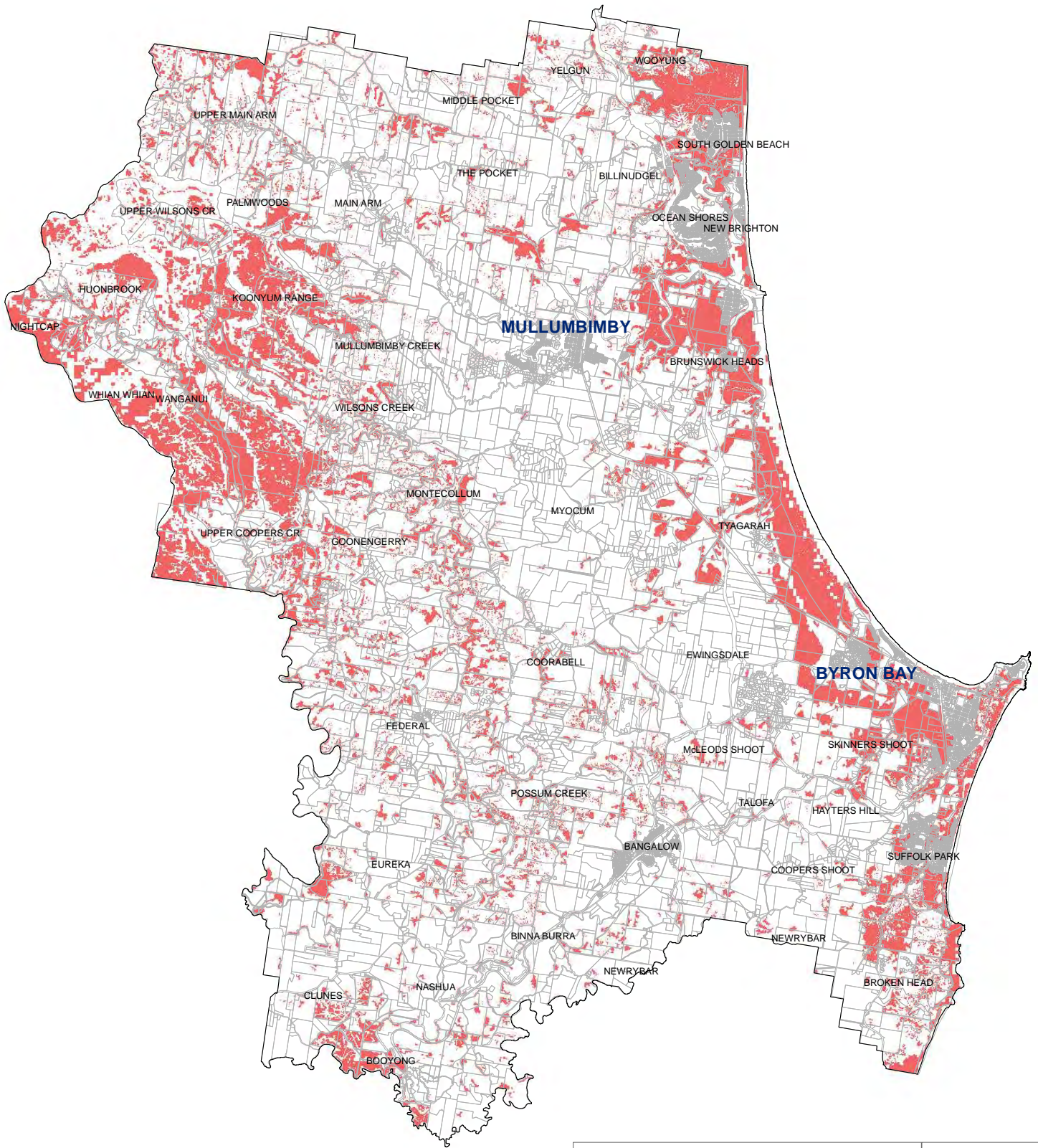
0 2.5 5 Kilometers

1:160,000 @ A4 size






Date: 5/04/2017

ASSESSABLE LAND: 'Category 1 & 2 Bushfire Vegetation (non-extreme)'



Legend

-  Shire Boundary
-  Land Parcels
-  Category 1 & 2 Bushfire Vegetation (non-extreme)

DRAFT BYRON RURAL LAND USE STRATEGY

MAP 16

Land affected by Category 1 & 2 Bushfire Vegetation (located outside of "Extreme" bushfire risk areas identified in Map 6)



Disclaimer : While all reasonable care has been taken to ensure the information contained on this map is up to date and accurate, no warranty is given that the information contained on this map is free from error or omission. Any reliance placed on such information shall be at the sole risk of the user. Please verify the accuracy of the information prior to using it. Note : The information shown on this map is a copyright of the Byron Shire Council and the NSW Department of Lands.

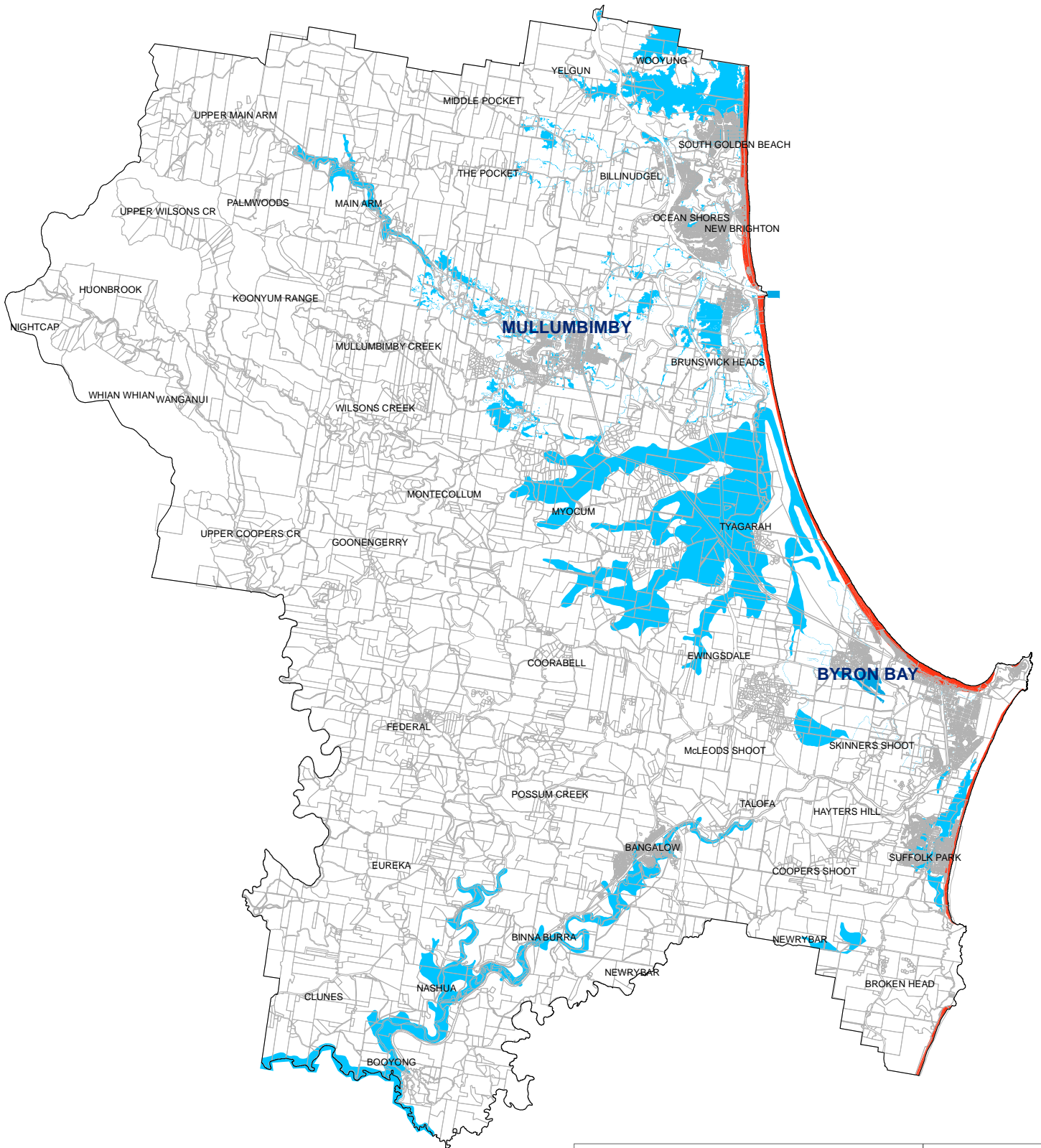
0 2.5 5 Kilometers

1:160,000 @ A4 size

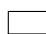





Date: 5/04/2017

ASSESSABLE LAND: 'Flood risk and Coastal Erosion'



Legend

-  Shire Boundary
-  Land Parcels
-  Coastal Erosion Precincts 1-2
-  Flood Prone Land

DRAFT BYRON RURAL LAND USE STRATEGY **MAP 17**

'Flood Prone' = 1:100 year ARI + Climate Change

'Coastal Erosion' = Planning Precincts 1 & 2
(as identified in Part J of DCP 2010)



Disclaimer : While all reasonable care has been taken to ensure the information contained on this map is up to date and accurate, no warranty is given that the information contained on this map is free from error or omission. Any reliance placed on such information shall be at the sole risk of the user. Please verify the accuracy of the information prior to using it. Note : The information shown on this map is a copyright of the Byron Shire Council and the NSW Department of Lands.

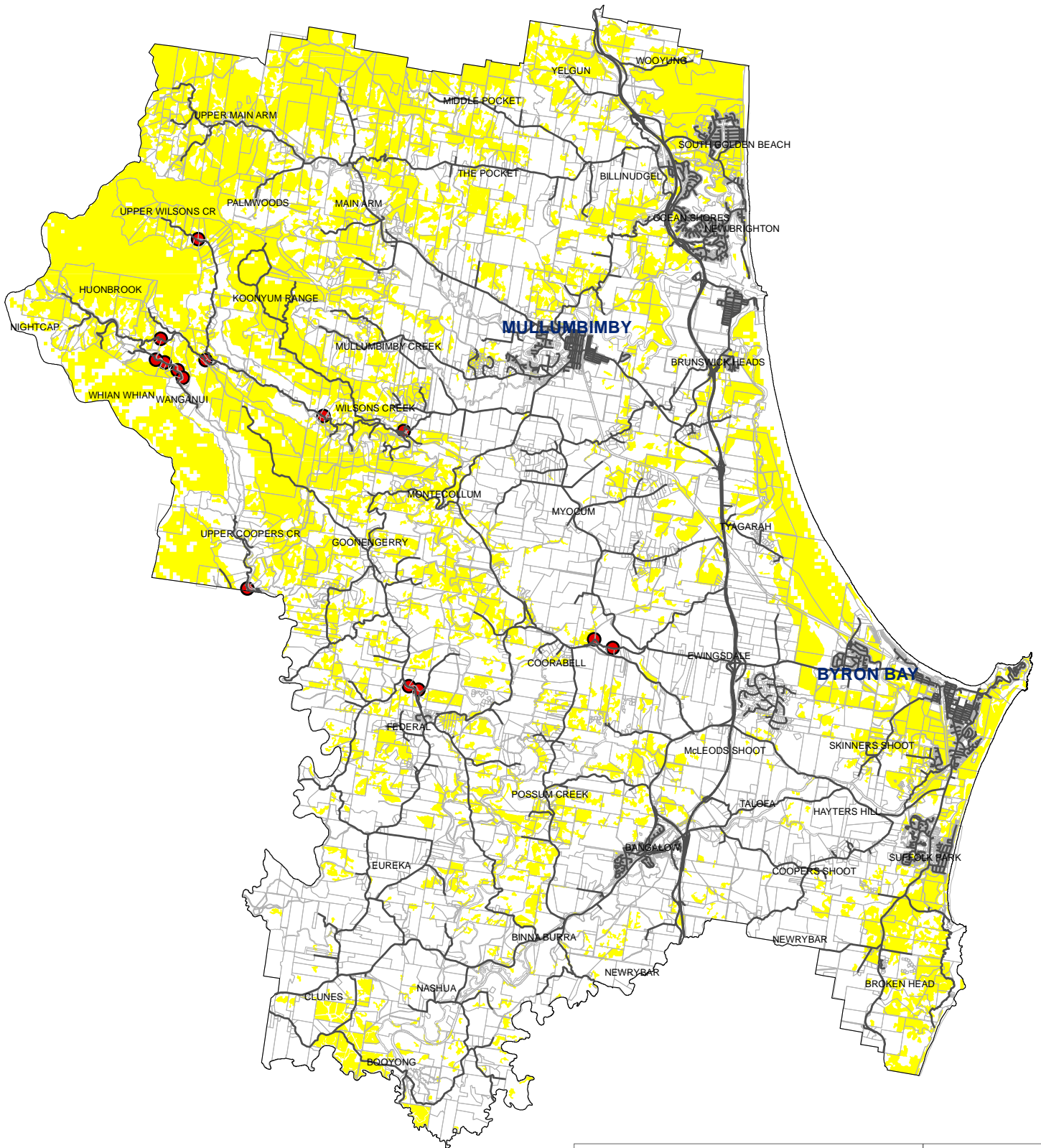
0 2.5 5 Kilometers

1:160,000 @ A4 size

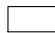






Date: 5/04/2017

ASSESSABLE LAND: 'Vehicle access safety and risk'



Legend

-  Shire Boundary
-  Roads
-  Land Parcels
-  Known landslip sites
-  Category 1 Bushfire Vegetation

DRAFT BYRON RURAL LAND USE STRATEGY

MAP 18

Vulnerability of essential access roads to:

- Category 1 Bushfire Vegetation, or
- Landslip - sections of road having a history of landslip



Disclaimer : While all reasonable care has been taken to ensure the information contained on this map is up to date and accurate, no warranty is given that the information contained on this map is free from error or omission. Any reliance placed on such information shall be at the sole risk of the user. Please verify the accuracy of the information prior to using it. Note : The information shown on this map is a copyright of the Byron Shire Council and the NSW Department of Lands.

0 2.5 5 Kilometers

1:160,000 @ A4 size



Date: 5/04/2017