

Report No. 13.23 Preferred Alignment Mullum to Bruns Cycleway

Directorate: Infrastructure Services

5 **Report Author:** Kate Draskovic, Planning Support Officer
Judd Cornwall, Traffic & Transport Engineer

File No: I2022/1736

Summary:

10 The purpose for this report is to put forward a recommendation for the proposed Mullumbimby to Brunswick Heads Cycleway alignment based on community feedback.

This report has summarised the feedback received from the public in response to their preferred outcome. The exact alignment of the routes will be determined as part of future investigation and design activities.

15 **RECOMMENDATION:**

That Council support option 1 (from the community “Tell us what you think” survey) Mullum to Bruns Cycleway and endorse Council staff in progressing with the design on this alignment.

20

Attachments:

25 1 Raw Data - Mullum to Bruns Cycleway, E2022/117394

Report

30 Council is proposing to build a cycle path that connects Mullumbimby to Brunswick Heads and surrounding areas including Ocean Shores.

Following investigations into a number of different options, two potential outcomes have been proposed as shown in figure 1.

5 Option 1 (formally route A, figure 2) – north route begins near the rail station in Mullumbimby and heads north along the rail corridor until Synotts Lane and then heads east through adjoining properties, the Brunswick Valley STP and connects to Brunswick Valley Way just north of Rajah Road Ocean Shores.

10 Option 2 (formally route D, figure 2)– south route follows Argyle Street out of Mullumbimby and cuts through old paper roads to a section of the Saddle Road and then connects to Brunswick Heads from the southern entry point (the Motorway overpass) to Tweed Street Brunswick Heads.



Figure 1: Proposed cycleway options Mullum to Bruns (media release)

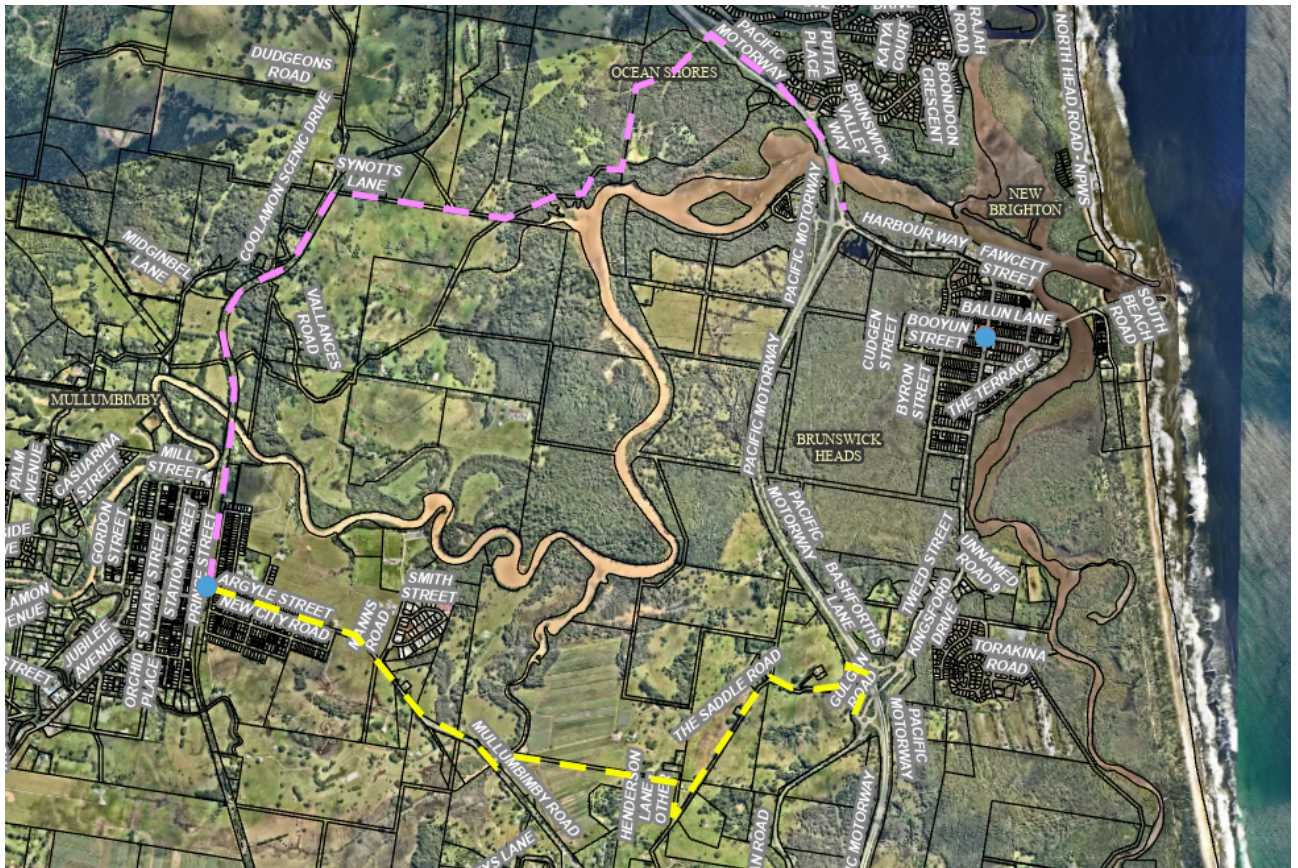


Figure 2 – Route A (Pink) and Route D (Yellow) options to connect Mullumbimby to Brunswick Heads

Community Feedback

5 Council asked for community feedback via a survey located on the Byron Shire Council website. The ‘Mullum to Bruns Cycleway project – tell us what you think’ survey was available from 7 September 2022 to 7 October 2022.

803 responses were received during the survey period, a summary and analysis of the responses is provided below:

10 Survey Question 1 - To what degree do you support the concept of a cycle route that connects Mullumbimby to Brunswick Heads and Ocean Shores?

The options available to respondents were strongly support, somewhat support, neutral, somewhat oppose and strongly oppose. Respondents were only able to select one option.

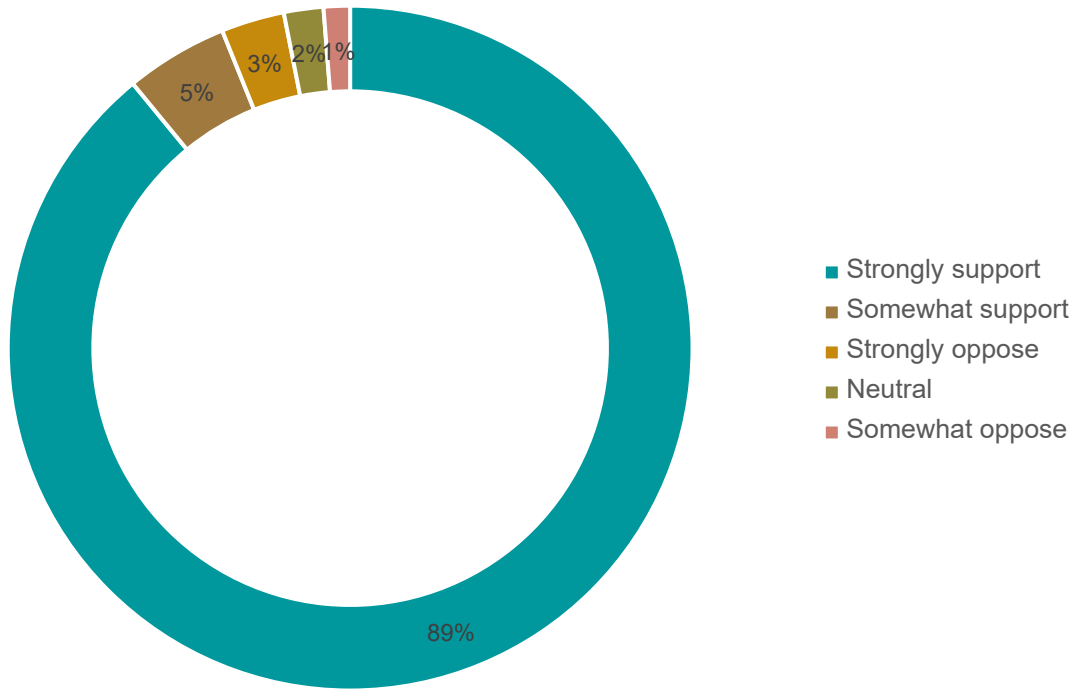
The overwhelming majority of respondents (89%) strongly support the concept.

15 The results are as below;

- Strongly support (89%)
- Somewhat support (5%)

- Strongly oppose (3%)
- Neutral (2%)
- Somewhat oppose (1%)

To what degree do you support the concept of a cycle route that connects Mullumbimby to Brunswick Heads and Ocean Shores?



5 **Survey Question 3 - How would you be likely to use the cycleway routes proposed?**

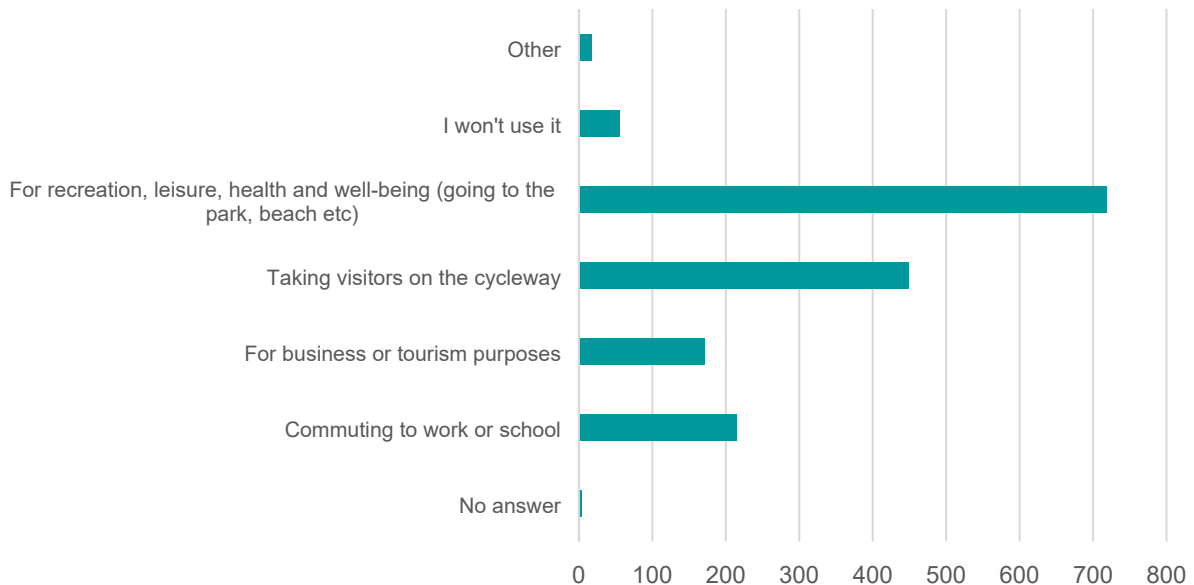
Respondents were given six options to choose from, which are listed below and could select any number of options.

10 The most selected use of the cycle way was for recreation, leisure, health and well-being (going to the park, beach etc) which was selected 719 times and accounted for 44% of responses.

The results are as below;

- For recreation, leisure, health and well-being (going to the park, beach etc) (44%)
- Taking visitors on the cycleway (28%)
- Commuting to work or school (13%)
- 15 • For business or tourism purposes (10%)
- I won't use it (3%)
- Other (1%)

How would you be likely to use the cycleway routes proposed?



Survey Question 5 - Please select the three things you value the most.

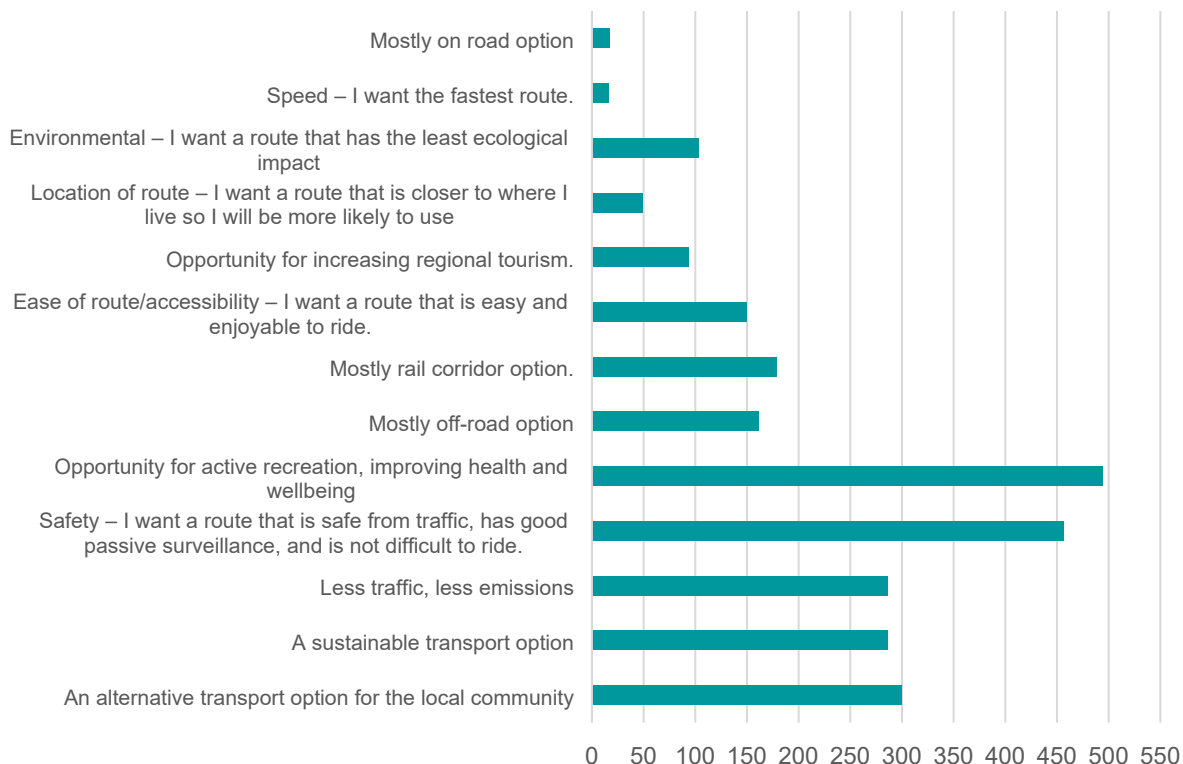
Respondents were asked to select the three things they value the most out of the options listed below.

- 5 The values selected the most amount of times were ‘opportunity for active recreation, improving health and wellbeing’ (19%), followed closely by ‘Safety – I want a route that is safe from traffic, has good passive surveillance, and is not difficult to ride’ (18%).

The results are as below;

- 10 • Opportunity for active recreation, improving health and wellbeing (19%)
- Safety – I want a route that is safe from traffic, has good passive surveillance, and is not difficult to ride (18%)
- An alternative transport option for the local community (12%)
- A sustainable transport option (11%)
- Less traffic, less emissions (11%)
- 15 • Mostly rail corridor option (7%)
- Mostly off-road option (6%)
- Ease of route/accessibility – I want a route that is easy and enjoyable to ride (6%)
- Opportunity for increasing regional tourism (4%)
- Environmental – I want a route that has the least ecological impact (4%)
- 20 • Location of route – I want a route that is closer to where I live so I will be more likely to use (2%)
- Speed – I want the fastest route (1%)
- Mostly on-road option (1%)

Please select the three things you value the most



Survey Question 6 (Whole data set) – Which option do you prefer?

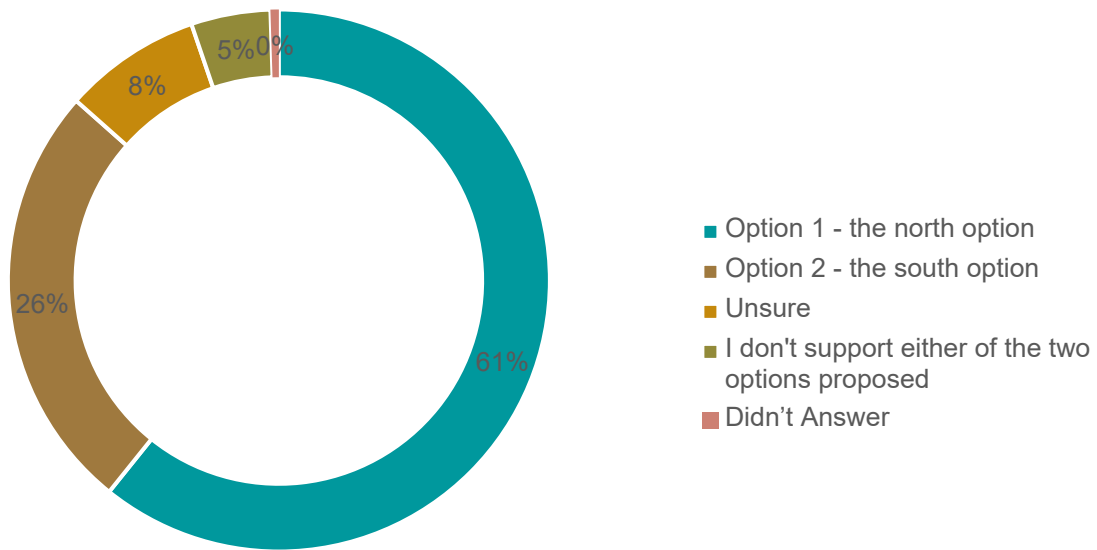
The respondents were asked which cycle route they would prefer, Option 1 – the north option or Option 2 – the south option:

5 Option 1 – the north option was the preferred option with 61% of the votes.

The results are as below;

- Option 1 – the north option (61%)
- Option 2 – the south option (26%)
- Unsure (8%)
- 10 • I don't support either of the two options proposed (5%)
- No answer (0%)

Which option do you prefer?

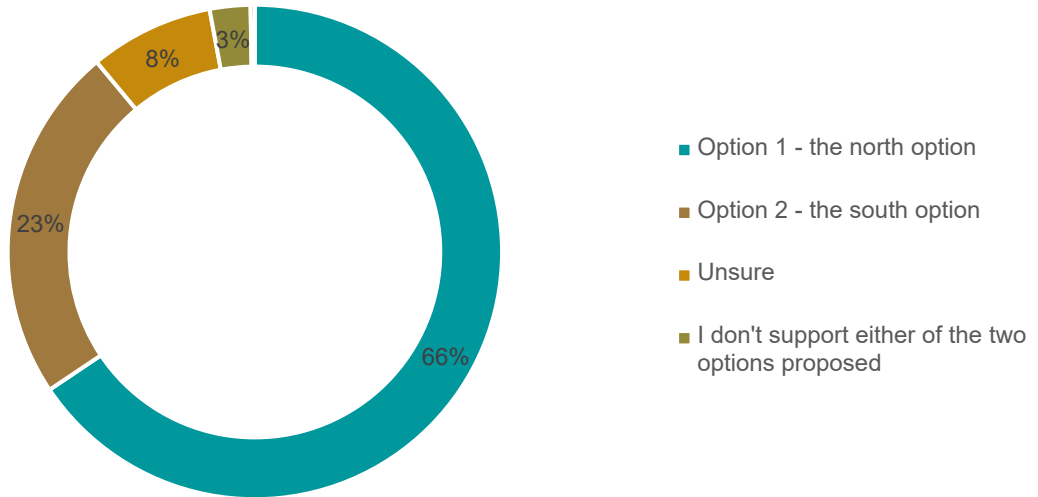


Survey Question 6 (Only considers people who strongly support a Mullum to Bruns Cycleway)– Which option do you prefer?

5 Looking at just the answers from the 89% of respondents that strongly support the cycleway, the results are as below;

- Option 1 – the north option (66%)
- Option 2 – the south option (23%)
- Unsure (8%)
- I don't support either of the two options proposed (3%)

Which option do you prefer? (Respondents who Strongly Support the Cycleway)



Survey Question 9 – Tick the age group that applies to you.

Respondents were asked to select their age group bracket.

The results are as below;

- 5 • 56-65 (28%)
- 46-55 (27%)
- 36-45 (15%)
- 66-75 (15%)
- 26-35 (7%)
- 10 • 75+ (3%)
- 18-25 (3%)
- 0-17 (2%)

15 Survey Question 10 – Tick all that apply to you.

Respondents were asked to select all that apply out of the following options.

The results are as below;

- I am a resident of the Byron Shire (35%)
- I am a ratepayer of the Byron Shire (33%)
- 20 • I work in the Byron Shire (22%)
- I am a visitor to the Byron Shire (7%)
- Other (3%)

Survey Question 11 – Which suburb do you live in?

Respondents were asked to enter the suburb they live in

The most common responses are as below;

- Mullumbimby (25%)
- 5 • Ocean Shores (22%)
- Brunswick Heads (7%)
- Byron Bay (5%)
- South Golden Beach (4%)
- Main Arm (2%)
- 10 • Myocum (2%)
- Bangalow (2%)
- Lismore (2%)
- Suffolk Park (2%)

Survey questions not contained within this report:

- 15 For the purpose of this report only questions that relate to the cycleway alignment are referred to. Other responses to general questions have been noted and are contained within attachment 1 of this report (E2022/117394).

Strategic Considerations

20 **Community Strategic Plan and Operational Plan**

CSP Objective	CSP Strategy	DP Action	Code	OP Activity
5: Connected Infrastructure We have connected infrastructure, transport, and facilities that are safe, accessible, and reliable	5.1: Provide a safe, reliable, and accessible transport network	5.1.3: Active transport - pedestrians and cycleways - Deliver the actions identified in the Pedestrian Access and Mobility Plan and in the Bike Plan	5.1.3.3	Mullumbimby to Brunswick Heads On Road Cycleway

Recent resolutions

Resolution number **22-140**

1. *Commences community consultation on Route Options A and D as part of the Mullum to Bruns cycleway project.*
- 5 2. *Reports the findings of the community consultation back to Council with a view to inform a single preferred route for the cycleway which is to be progressed in terms of investigation, planning and design activities. (Lyon/Ndiaye)*

Financial Considerations

10 Design for the Mullum – Bruns Cycleway can be funded through the budget allocation in (GL 44281.013) there is currently approximately, \$300k available to progress the design.

Consultation and engagement

15 Council released a survey to the public seeking feedback in relation to the Mullum to Bruns cycleway. The Media release went public on 13 September 2022 and closed on 7 October 2022.