

# Suffolk Park Community Hall



**Suffolk Park Community Hall**  
Corner of Clifford and Alcorn St, Suffolk Park 2481

**Phone:** 0429 466 260

**Email:** [suffolkparkhall@gmail.com](mailto:suffolkparkhall@gmail.com)  
[www.suffolkparkhall.com](http://www.suffolkparkhall.com)





Nestled in the dunes behind Tallow Beach, with polished timber floors, exposed beams and a coastal vibe, the Suffolk Park Community Hall exudes a warmth that makes it ideal for hosting gatherings, meeting, workshops and classes.

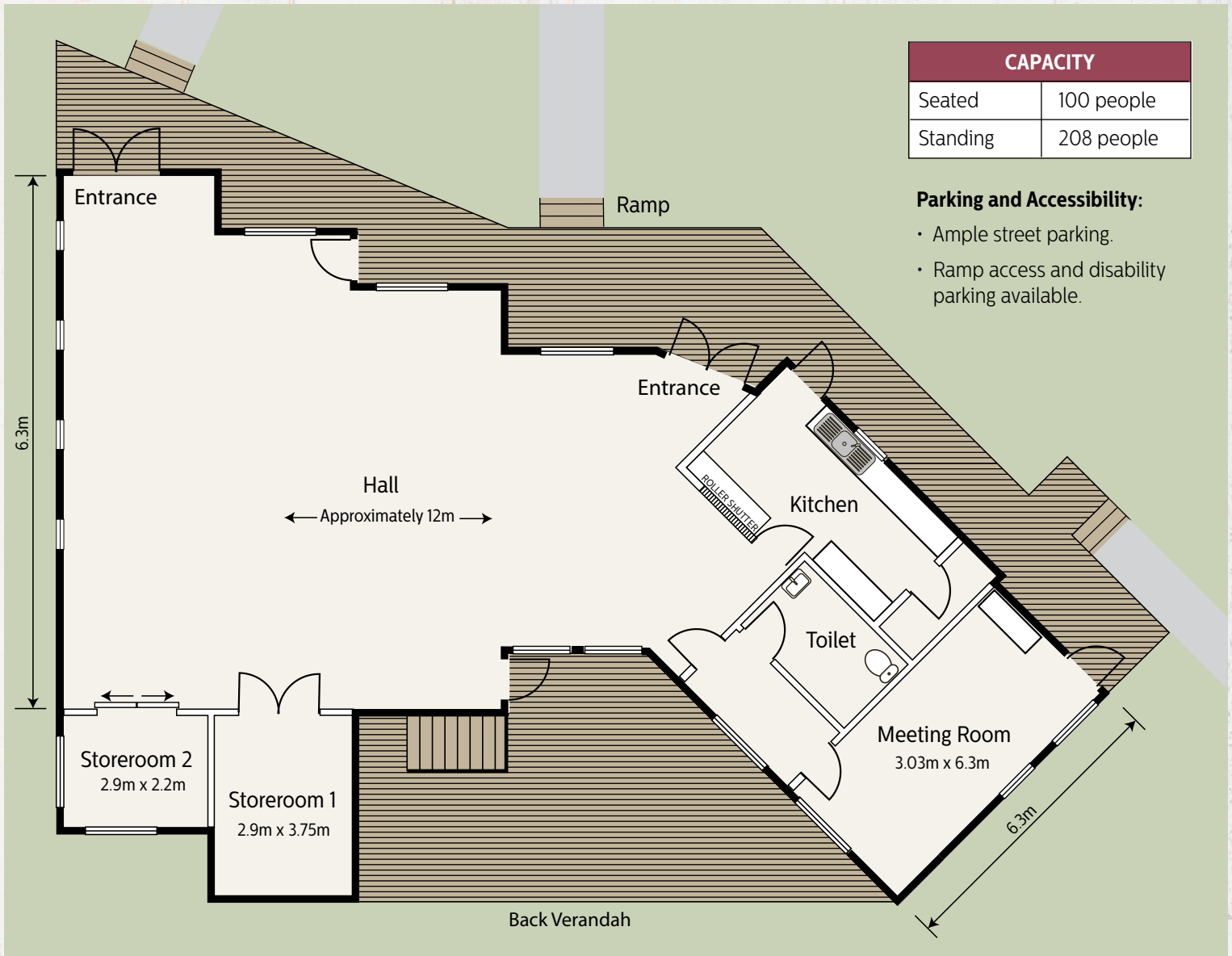
Offering two highly usable spaces including a meeting room and the larger hall area. The big covered decks are also a great extension to entertaining areas and the large kitchen is functional and perfect for catering to your event.

Ideal for classes, workshops, concerts, plays, meetings, parties, celebrations, wedding ceremonies and receptions, this wonderful community asset is perfect for hosting your next event.



# Suffolk Park Community Hall

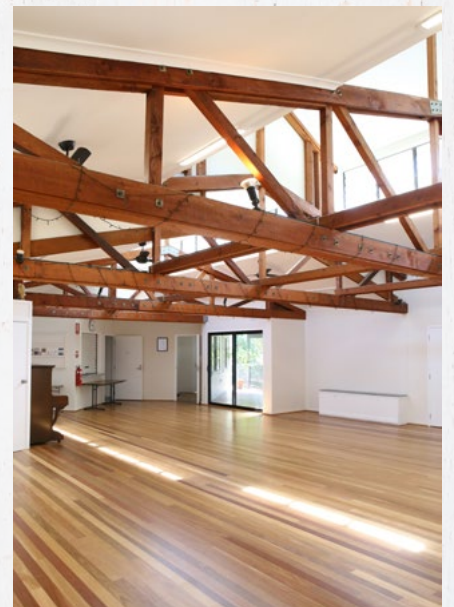
## Floor Plan



Kitchen



Multipurpose Space



Hall