

South Golden Beach Hall



South Golden Beach Hall

Corner of Pacific Esplanade and Helen Street
South Golden Beach NSW 2483

Phone: 0403 471 856

Email: sgbhall@inet.net.au

www.southgoldenbeachcommunitycentre.com



In the dunes behind South Golden Beach, with polished timber floors, exposed beams and a coastal vibe, the South Golden Beach Hall exudes warmth that is reminiscent of a beautiful home. The hall is a well loved and supported community asset and ideal for hosting gatherings, meetings, workshops and classes.

The spacious indoor area is complemented by the extensive deck space. A practical and well designed kitchen can be accessed from outside as well as inside, giving flexibility to your event.

Picnic benches are dotted throughout the coastal gardens, extending and welcoming the useability of the venue. The centre has direct beach access and parking is plentiful.

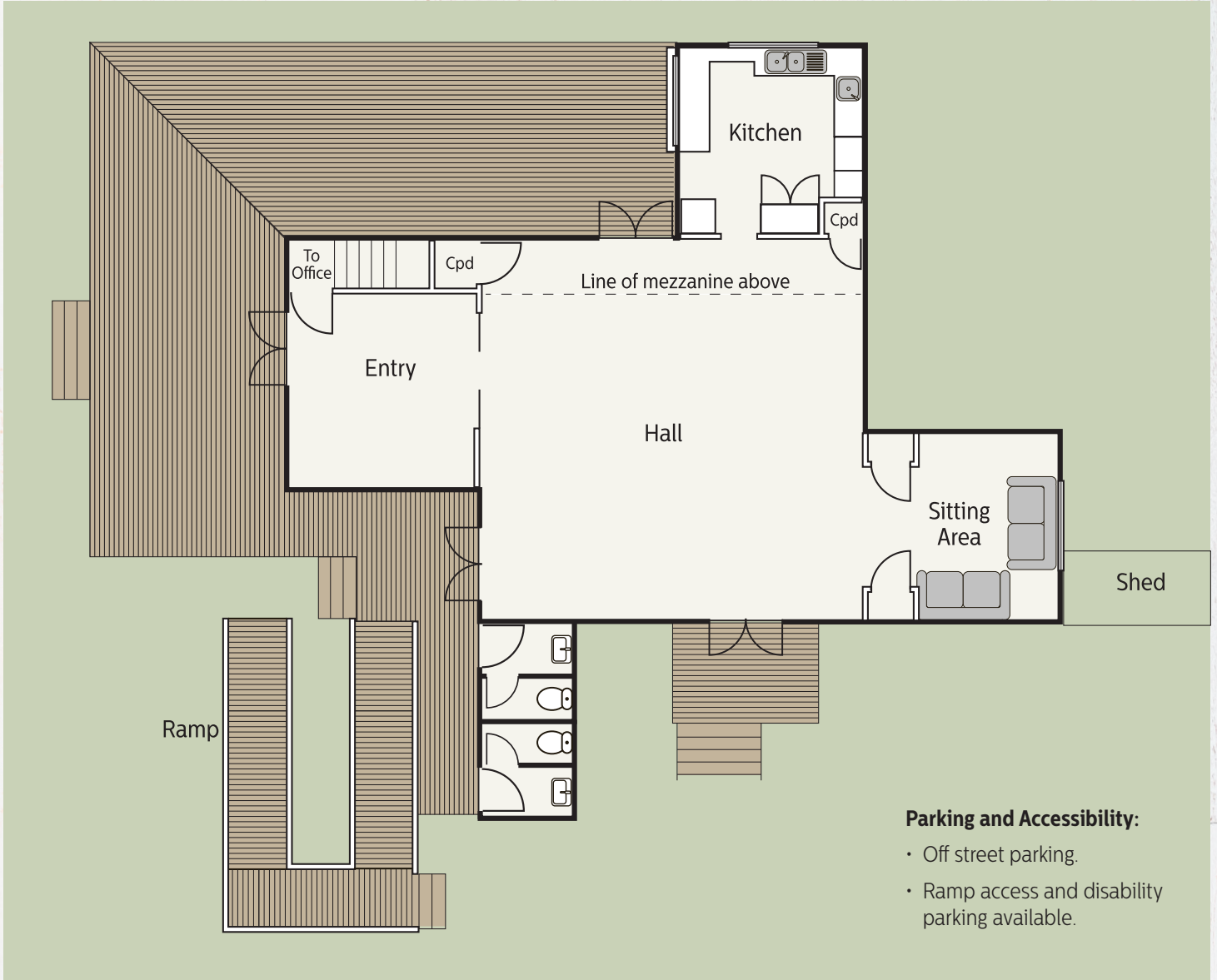


South Golden Beach Hall Floor Plan

CAPACITY	
Seated	56 people
Standing	80 people

1200cm

1060cm



Parking and Accessibility:

- Off street parking.
- Ramp access and disability parking available.



Kitchen



Sitting Area

Fees and Booking Information

Bookings and enquiries:

South Golden Beach Hall

Corner of Pacific Esplanade and Helen Street
South Golden Beach NSW 2483

Phone: 0403 471 856

Email: sgbhall@iinet.net.au

www.southgoldenbeachcommunitycentre.com

INVENTORY		INVENTORY	
Tables	8	Fridges	1
Chairs	50	Microwave	1
Crockery and cutlery	Minimal	Cooktop	1
		Sinks	2

1. Check the online calendar to see the time slots that are available: www.southgoldenbeachcommunitycentre.com
2. Read the 'Hire Agreement and Conditions' page.
3. Complete the online form, OR;
4. Print, detach and complete the declaration on the second page of the 'Hire Agreement'. Then post it to the address provided OR email it to our booking officer: sgbhall@iinet.net.au
5. You will then be sent an invoice for the hire fee due with details of how to pay.
6. If you wish to hire the hall on a regular basis you must also forward a copy of your *public liability insurance policy*.
7. Please note that your preferred time slot cannot be confirmed until receipt of the appropriate paperwork.

FEES	COMMUNITY RATE	STANDARD RATE
Regular Groups / Classes	\$15 per hour	\$18 per hour
Day time special events	\$15 per hour	\$30 per hour
Night time special events (from 5pm)	\$15 per hour	\$30 per hour
Kitchen - Separate Hire	\$15 per hour	\$20 per hour
Office (includes broadband)	\$15 per hour	\$15 per hour

ADDITIONAL EXPENSES	FEE
Bond - Low risk one off event	\$100
Bond - Kitchen - Special event (per event)	\$50
Bond - Special event	\$300
Key deposit	\$50
Replacement of lost key	\$50
Cleaning The hall must be left in a suitably clean standard (including removal of garbage)	\$70
Storage (Price on application)	\$7-\$20 per month

CANCELLATION POLICY

The hirer must notify the booking officer in writing of proposed changes to hours or use of the hall a minimum of two weeks prior to changes taking effect. The booking officer will notify the hirer if the changes can be accommodated.

- If the hirer cancels with less than 2 weeks notice, but more than 7 full days notice, 50% of the total fee is forfeited
- If the hirer cancels with less than 7 days notice, the total fee is forfeited

(At the committee's discretion)

COUNCIL RATE DESCRIPTIONS

Community Rate means:

Community Rate must meet the following guidelines:

Not-for-profit incorporated community organisation and a certificate of incorporation to be provided; OR

A community group that is not incorporated and does not generate any income for the group or any individual; OR

Registered as an income tax exempt charity (ITEC) with the ATO and evidence to be provided; OR

If fundraising on behalf of a charity - with all funds raised to be provided to the charity - a letter of support from the registered charity to be provided.

Commercial Rate means: Any activity that generates income from the use of Council owned or managed land that is assessed as not meeting the definition of Community Rate.

Standard Rate means: Any activity that does not generate income from the use of Council owned or managed land that is assessed as not meeting the definition of Community Rate.

Private Hire means: A genuine private function that is not open to members of the public.

