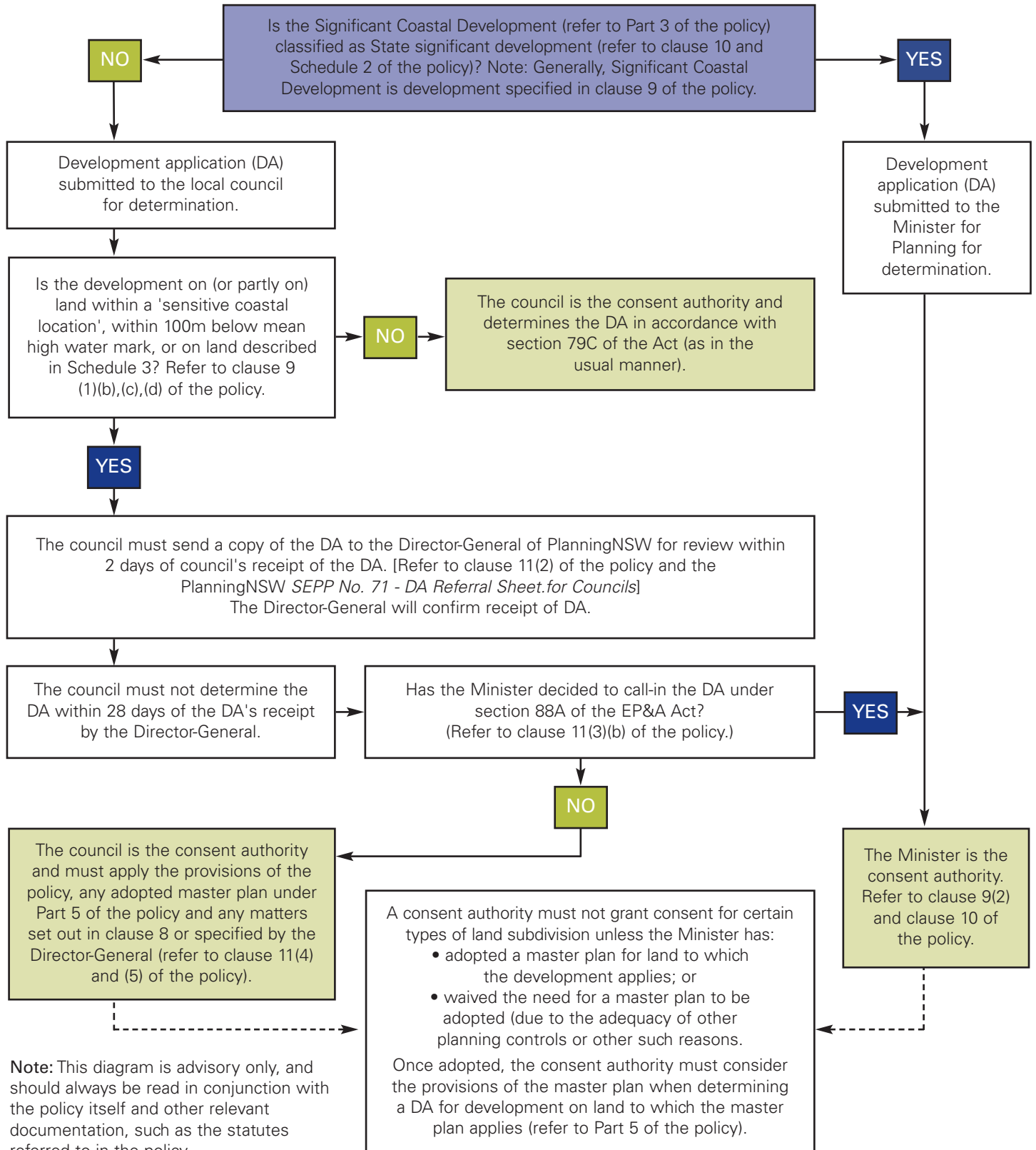


State Environmental Planning Policy No. 71 – Coastal Protection

Process diagram for Significant Coastal Development (part 3)



Note: This diagram is advisory only, and should always be read in conjunction with the policy itself and other relevant documentation, such as the statutes referred to in the policy.

© Crown copyright 2002 Nov02/024B

Disclaimer While every reasonable effort has been made to ensure that this document is correct at the time of printing, the State of New South Wales, its agents and employees, disclaim any liability to any person in respect of anything, or the consequences of anything, done or omitted to be done in reliance upon any part of this document.