

Tweed Street Master Plan

Design Process and Community Consultation

The process of developing this Master Plan has included a substantial community consultation. The process is documented in the Project Storyboard. The key elements of this process included:

- Analysis of all previous work done on Tweed Street prior to Social Habitat in May 2009;
- Historical Community Mapping of Tweed Street and Brunswick Heads;
- Current Community Mapping, which produced around 45 maps from community members; and
- Workshops and presentations to a number of community groups including the Brunswick Heads Community Forum, Tweed Street Taskforce, Brunswick Heads Progress Association and Brunswick Heads Chamber of Commerce.

Key Design Ideas

As a result of the consultation and research related to Tweed Street the following are the key design outcomes:

- Tweed Street will be returned to a slower, quieter and more narrow street;
- The road will be lined with street trees that are distinct to Brunswick Heads relating to both its natural environment and cultural heritage;
- The road will be divided into precincts relating to the East-West nature of the town so that:
 - The North and South town entrance precincts will relate directly to the existing natural environments;
 - The blocks from Short Street to Booyun Street and Mullumbimbi to Fawcett Street are transition precincts relating more to the streets around them; and
 - The blocks from Booyun to Mullumbimbi Street will be more like a plaza and will relate more to the commercial centre of town;
- At the southern entrance to the town a dedicated shared path separate to the road and existing footpath will be created for personal wheeled transport including bicycles and "granny scooters"; and
- The shared path will create a spine for art installations that interpret various parts of the environment, people and history of Brunswick Heads.
- The existing stormwater system and 'nature strip' will not be altered. Except in new the pocket park in front of "Breeze" housing development.

Art/ Historical Installations

Art installations will relate to the environment, history and culture of Brunswick Heads. The installations along the street should be multi-layered and integrated with a broader strategy for public and community art in Brunswick Heads.

The key thematic idea of the Master Plan is to use the bicycle/"granny scooter" path to link the individual installations that are each conceived separately but which have a number of common elements. The common elements of each installation would include:

- Plant Ecology
- Animals
- Bird life
- Marine Life
- Indigenous Story/ History
- Cedar Cutting History
- Maritime History and Shipwrecks
- Fishing Commercial and Recreational
- The Pacific Highway
- Youth
- Surfing
- Tents and Tinnies
- Community History
- Wild Chickens

- Incorporation of a functional seat that is suitable to seat up to 3 people at a time.
- A specific aspect of the environment or cultural development of Brunswick Heads. The following are suggestions (some of which are outlined in greater detail on the plan):
- A personal story relating to a figure of Brunswick Heads history related to the theme of the installation. These personal stories need not be of a famous person, it could be an infamous person or just a normal person who typifies a particular aspect of Brunswick History.

Lighting and Street Furniture

The general community feeling was that they did not want the style or treatment of the street to be generic or like other beachside towns. Since it is the selection of proprietary street furniture that often creates this 'sameness' we are suggesting the following strategy:

- Adapt and recycle existing features;
- Use street furniture of a style found elsewhere in Brunswick Heads; or
- Design purpose-built but cost effective installations.

Bicycle Racks

Use an inverted U shaped painted galvanised steel pipe fixed to ground.

Bins

Use existing bins located outside of Shopping centre and KC's. Location to be changed slightly in relation to new street furniture /installations at these locations.

Seats

Seats will all be individually designed and located as part of installations.

Lighting

- Recycle existing highway lighting towers including: decommissioning of high street lights; setting lower street lighting at appropriate level to matching height other Brunswick Heads street lighting. The existing light towers could also be used for hanging banners with small LED spotlights to illuminate banners.
- New bicycle track lights should match lights used on bicycle track on Southern approach to town.
- Other task lighting will be incorporated into the individual installations.
- Fingal Street roundabout Norfolk Pine should have installation of dual or multiple mode LED lights that illuminates in different ways at different times of year. Specifically it will have Christmas lights at Christmas. It will act as a key beacon sign for the centre of town.

Planting

There are several key principles guiding the choice of tree and plant species.

1. That they are consistent with Part H Landscaping of Byron Shire Council's Development Control Plan 2002.
2. Understanding that Tweed Street alignment would be in the area of the interface between two distinctive ecosystems, coastal heath/woodland and melaleuca swamp;
3. Use of species that are known to grow well locally in and around Brunswick Heads such as the Coastal Black Cypress Pine, Broadleaved Paperbark and Lilly Pillies, and avoiding the Forest Redgum, Swamp Mahogany and other eucalyptus species;
4. Use of trees under the powerlines that are small leaved varieties that will recover quickly from severe pruning;
5. Adding distinctive colour or shape to particular precincts of the street using trees such as the Cigar Cassia, Flame Tree or Pencil Cedar; and
6. Use of some deciduous trees such as the Red Cedar strategically planted to bring more light in during the winter months.

Large Trees

- *Euroschinus falcata* - Ribbonwood
- *Melaleuca quinquenervia* - Broadleaved Paperbark
- *Polyscias murrayi* - Pencil Cedar
- *Toona ciliata* - Red cedar
- *Podocarpus elatus* - Brown Pine
- *Callitris columnellaris* - Coastal Pine

Medium Sized Flowering (suitable for median strip)

- *Cassia marksiana* var *brewsteri* - Cigar Cassia
- *Brachycton acerifolius* - Flame tree

Medium sized trees fine leaved (Under powerlines)

- *Syzgium oleosum* - Blue Lilly Pilly
- *Syzgium leuhamii* - Riberry
- *Lepiderema pulchella* - Fine Leaved Tuckeroo

Medium sized trees

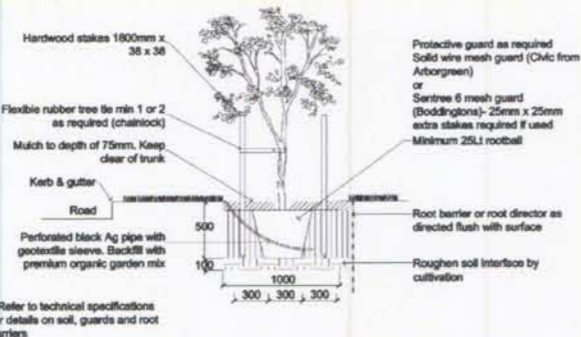
- *Flindersia bennettiana* - Bennett's Ash
- *Sterculia quadrifida* - Peanut Tree

Large Feature Tree

- *Araucaria heterophylla* - Norfolk Island Pine

Ground Covers and Low Scrubs

- *Lomandra hystrix*
- *Lomandra longifolia*
- *Hibbertia scandens*
- *Grevillia juniperina*
- *Hoya australis*
- *Ipomea pes-caprae*
- *Smilax glyciphylla*
- *Restio tetraphyllis*



Detail for typical street tree planting drawn from Street Tree Masterplan (Waverley Council 2008)

Tree Planting

- Refer to Part H of BSC DCP
- Provide a minimum of 3mØ clear space around large trees.
- Provide irrigation for plants initially; (as shown)
- Provide robust protection around trees when planting such as a frame or cage 2.5 - 3.0 metres square to prevent vandalism, ring barking and which gives room and a sense of the size the tree will grow to. No hard surfaces should intrude on this space.
- It is essential that trees supplied for street tree planting are a standard and quality that will allow them to establish rapidly and continue to grow as long term assets of the streetscape. The preference is to grow tube stock. Advanced specimens of native trees do not thrive after planting, struggle to adapt to their new environment and often do not progress to robust full growth. The only exception is the provision of the NorfolkPines which should be advanced trees.
- Stormwater must not be stopped from flowing to the areas around the trees. Use flat kerbing on the uphill side of plantings and raised kerbs below the trees to act as swales. Sandy soil drains quickly, so mulch must be maintained around the tree at all times.

Tree Maintenance and Management

It is important that in the early phase of growth - first three years - that the trees are maintained and replaced immediately if they die. The Brunswick Heads community has expressed an interest to be involved in this process in partnership with Council. The following are a number of strategies that may be explored:

- Adopt a Tree - A number of other councils have 'Adopt a Tree' programs where residents take on either individual responsibility for a tree or community responsibility for a streetscape. The Brunswick Heads Primary School may have a significant potential role.
- Engage with Job Network Providers - Use good connections with Job Network providers to create employment programs to plant and maintain street trees.
- Create a 'depot' for stockpiling mulch and compost to be used for renewing the areas around the trees.

Signage

The new realignment of the street is designed to allow major street signage to be positioned in the middle of the street in the middle of view, rather than to the side where at present it is confusing and distracting. There should be a new signage policy that has a hierarchy of signs.

- Major signs should be like signage used in Lismore with all key directional and tourism related information integrated into single signs. These will include signs positioned at: the Southern Entrance to town; the chicane at The Terrace; the beginning of median strip at Booyun Street; the Fingal Street roundabout; Mullumbimbi Street and at the Northern Entrance to town on the small median strip just before Fawcett Street.

- Other street signs should be retained as normal discreet signs and extraneous signs should be removed.
- Commercial signs that protrude into public space need to conform to a new uniform signage policy.

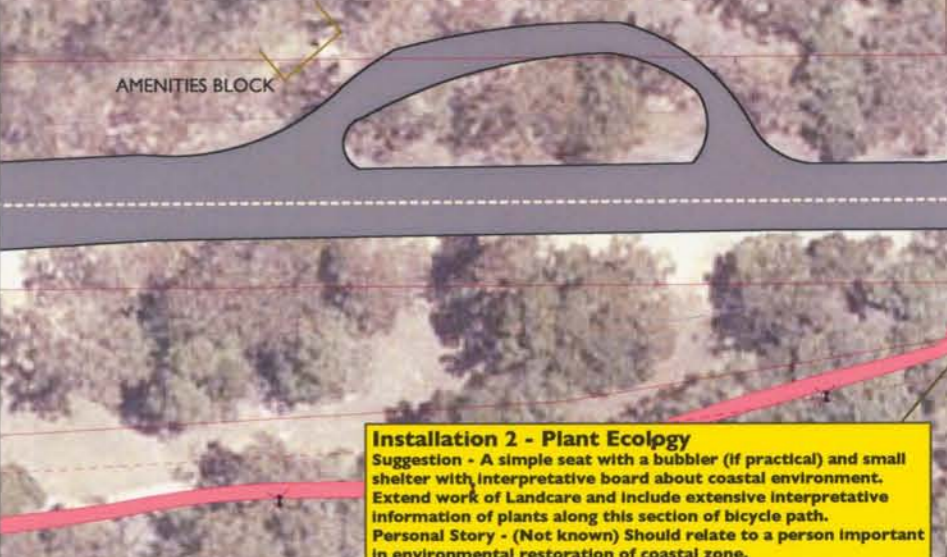


Typical Brunswick Heads bin and bike rack



Typical Brunswick Heads deck

Installation 1 - Wild Chickens and Brunswick Citizens
 Suggestion - Sculptural depictions of the wild chickens of Brunswick Heads and acknowledgement of the Brunswick Heads citizens buried at this location.
 Personal Story - Infamous Brunswick Heads resident of a previous era who thought he was a chicken.



Installation 2 - Plant Ecology
 Suggestion - A simple seat with a bubbler (if practical) and small shelter with interpretative board about coastal environment. Extend work of Landcare and include extensive interpretative information of plants along this section of bicycle path.
 Personal Story - (Not known) Should relate to a person important in environmental restoration of coastal zone.



Byron Shire Council Funded Project

Supported by the Tweed Street Taskforce
 Brunswick Heads Progress Association
 Brunswick Heads Chamber of Commerce &
 Brunswick Heads Community Forum
 Ideas contributed by the Brunswick Heads Community

Brunswick Heads. Simple Pleasures.



October 2009 Project is documented in
 Tweed Street Masterplan Storyboard Scale 1:500 & Details 1:200 at A1
 1:1000 & Details 1:400 at A3

Social Habitat

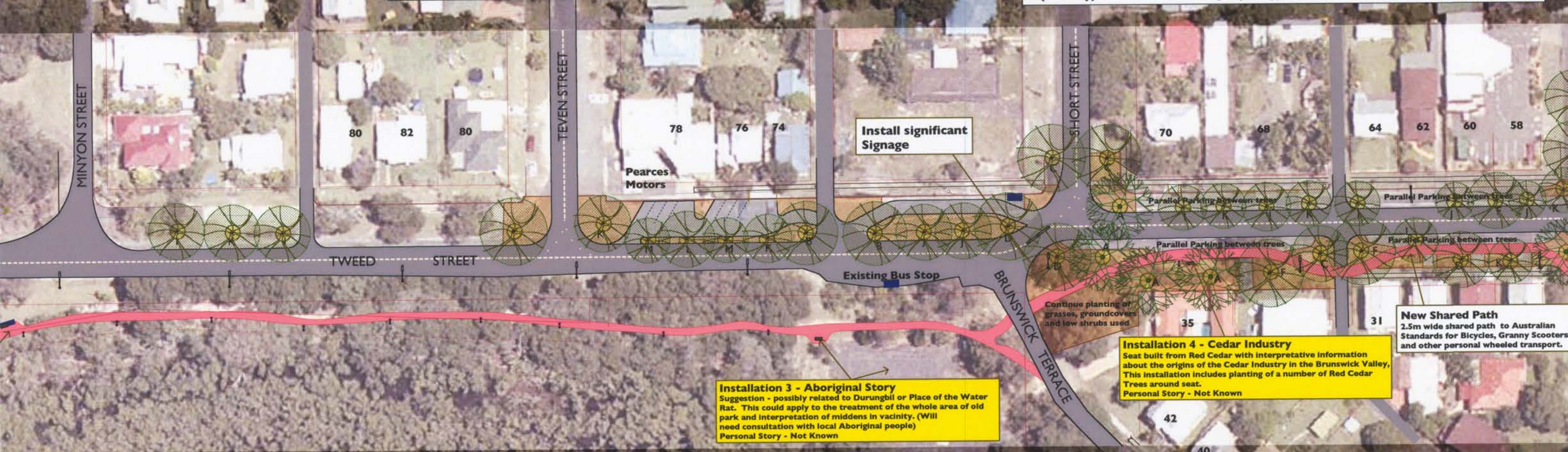
470 Main Arm Road Mullumbimby
 Ph 02 66845177 M 0410623348
 socialhabitat@bigpond.com.au





Small Leaf Medium Sized Trees

I. Syzygium luehmannii (Riberry) **J. Syzygium Oleosum (Lilly Pilly)** **K. Lepiderema pulchella (Fine Leaved Tuckeroo)**



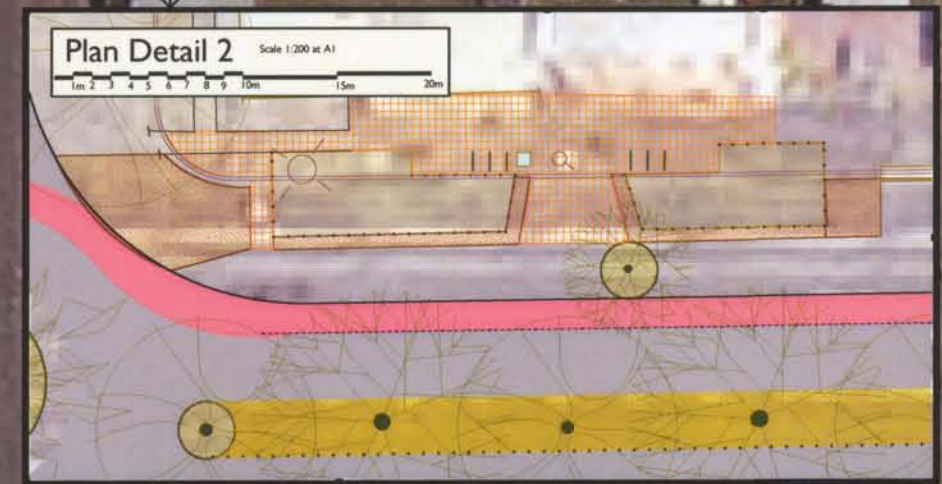
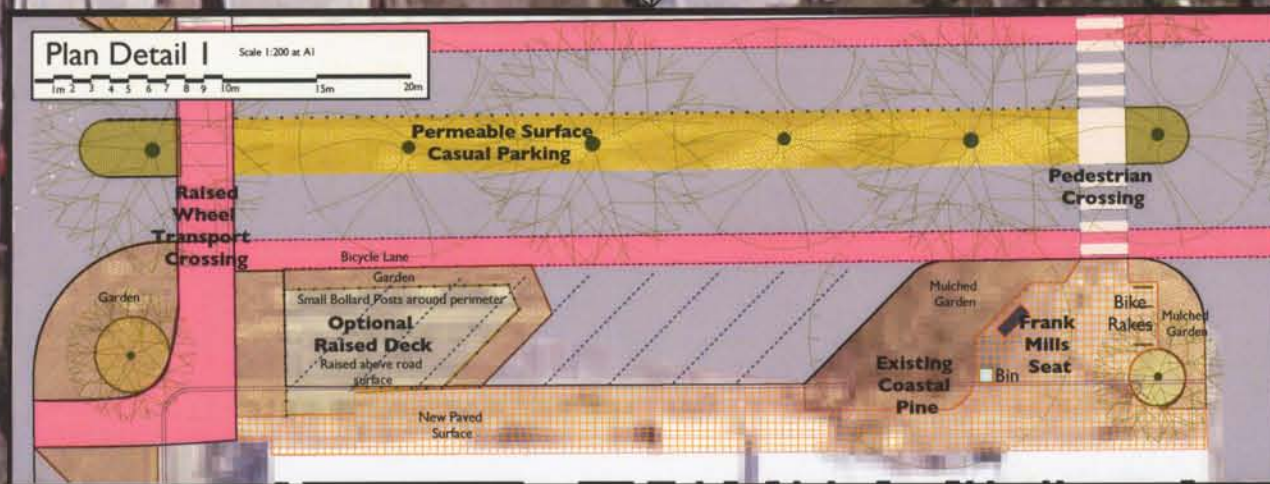
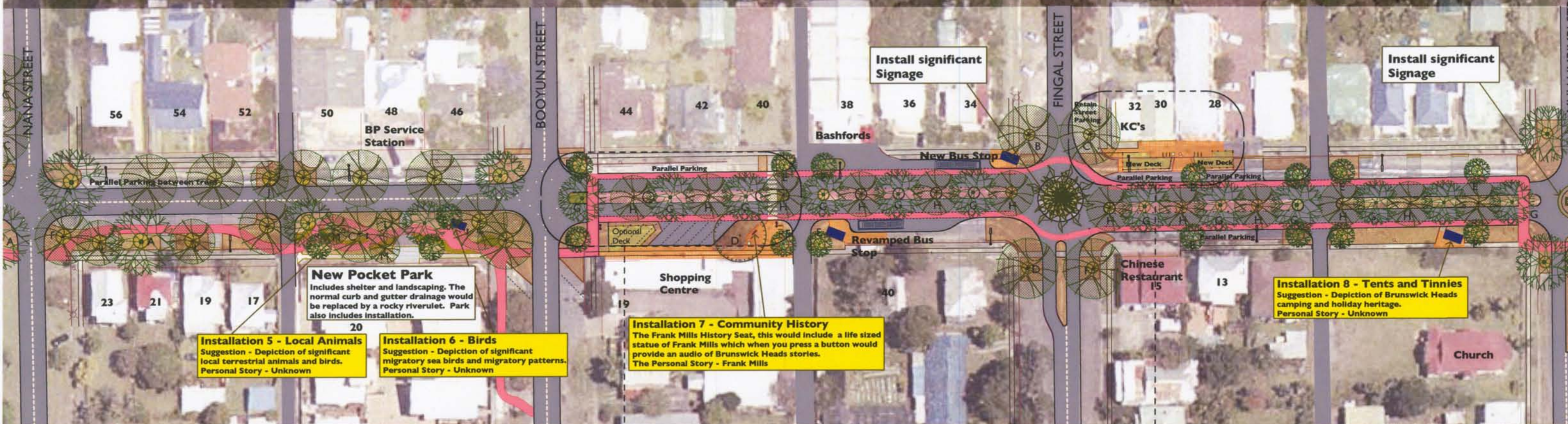
Medium Sized Trees

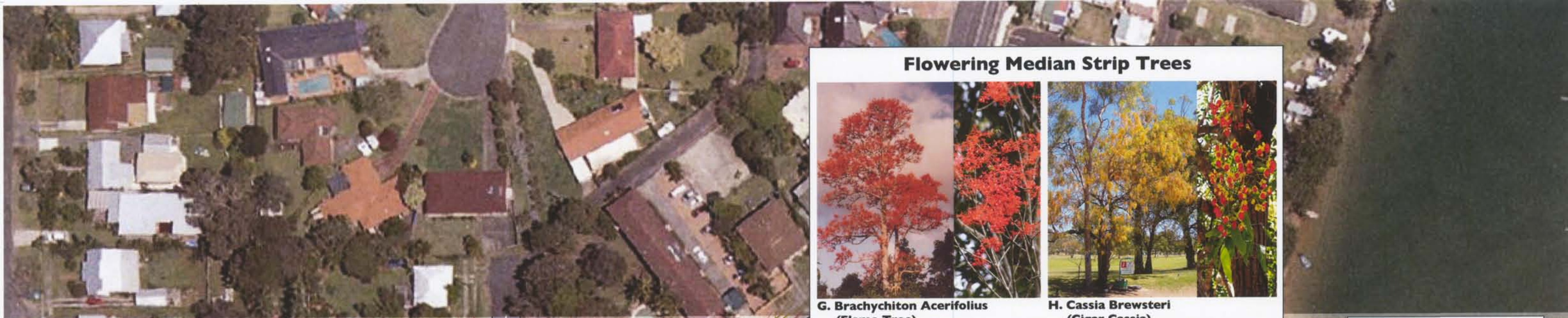
L. Flindersia bennettiana (Bennett's Ash) **M. Sterculia quadrifida (Peanut Tree)**

Key

Bicycle Path	Paved Area	Permeable Bitumen	Non-Deciduous Tree	New Street Light (to match existing)
Bitumen Road	Deck With bollarded edge	Tree protection	Deciduous Tree	Modified Highway Light
Bitumen Parking	Mulched Area (See planting list)	New Shelter	Norfolk Island Pine Tree	Hardwood Bollards

0 50 metres





Flowering Median Strip Trees



G. Brachychiton Acerifolius (Flame Tree)

H. Cassia Brewsteri (Cigar Cassia)

Installation 11 - Youth
Suggestion - Installation include a wall of the faces of the children and youth of Brunswick Heads
Personal Story - Unknown

Install significant Signage

Installation 12 - Maritime History
Suggestion - Seat and installation looking out over river relating history of river mouth as a port particularly the shipwrecks.
Personal Story - Robert Simpson

Installation 9 - Pacific Highway
Suggestion - Monument to the Unknown Truckie, the front end of a prime mover emerging from an overgrown garden and a bronzed truckie to remind people of Tweed Street's history as a highway.

Caltex Service Station

Installation 10 - Fishing
Suggestion - Reuse old fishing boat and incorporate seat and playspace.
Personal Story - Mohammad

Shops & Offices



Large Structural Street Trees



A. Toona ciliata (Red Cedar)

B. Podocarpus elatus (Brown Pine)

C. Melaleuca quinquenervia (Broadleaved Paperbark)



D. Callitris columnellaris (Coastal Pine)

E. Polyscias murrayi (Pencil Cedar)

F. Euroschinus falcata (Ribbonwood)

Feature Tree



N. Araucaria heterophylla (Norfolk Island Pine)

Plan Detail 3 Scale 1:200 at A1
1m 2 3 4 5 6 7 8 9 10m 15m 20m

