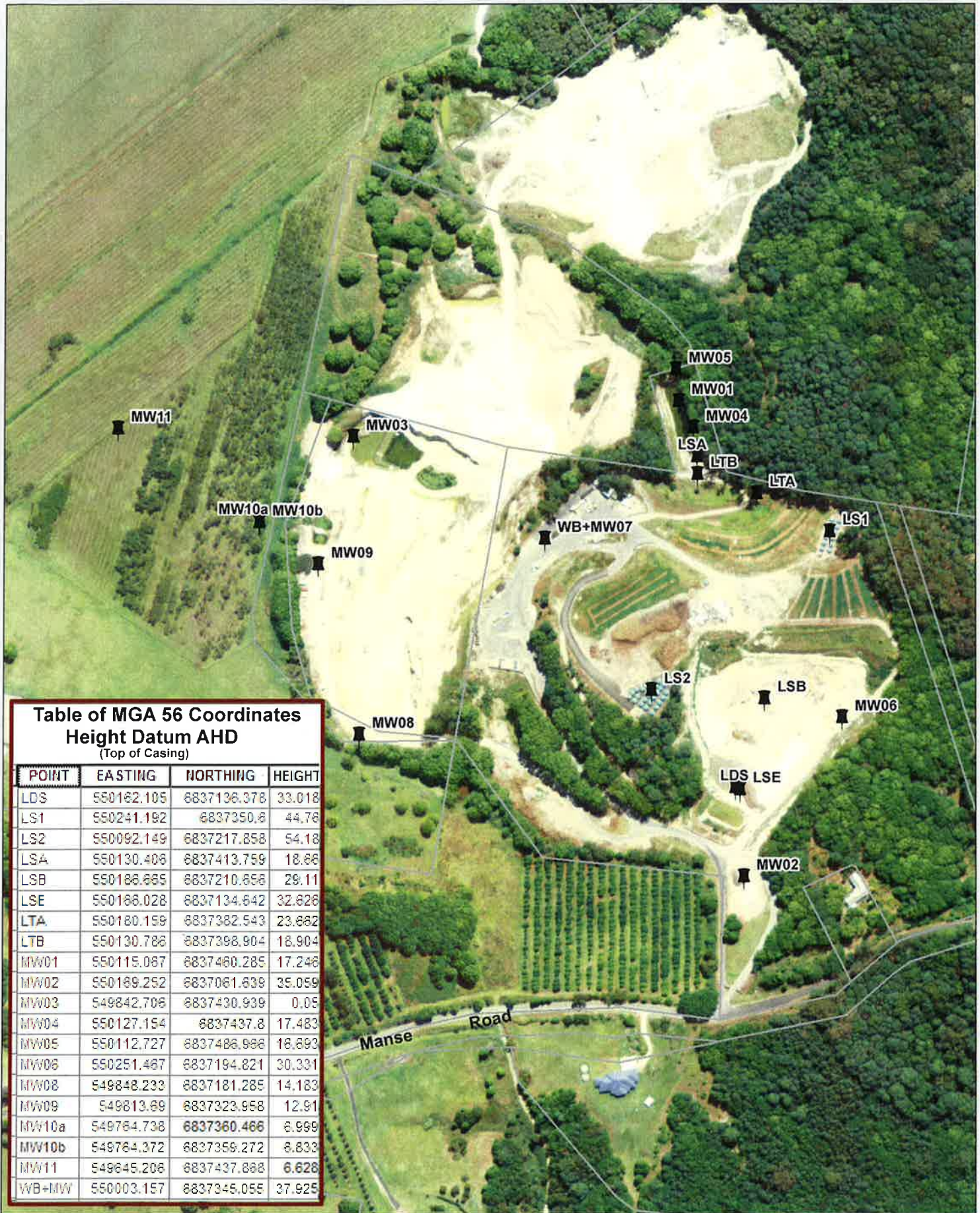
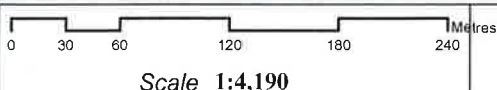


Myocum Waste Disposal Facility Monitoring Points



**Table of MGA 56 Coordinates
Height Datum AHD
(Top of Casing)**

POINT	EASTING	NORTHING	HEIGHT
LDS	550162.105	6837136.378	33.018
LS1	550241.192	6837350.8	44.78
LS2	550092.149	6837217.858	54.18
LSA	550130.408	6837413.759	18.66
LSB	550186.885	6837210.858	28.11
LSE	550186.028	6837134.842	32.828
LTA	550180.159	6837382.543	23.882
LTB	550130.788	6837398.904	18.904
MW01	550115.087	6837460.285	17.248
MW02	550189.252	6837061.639	35.059
MW03	549842.708	6837430.939	0.05
MW04	550127.154	6837437.8	17.483
MW05	550112.727	6837488.988	16.893
MW06	550251.487	6837194.821	30.331
MW08	549848.233	6837181.285	14.183
MW09	549813.89	6837323.958	12.91
MW10a	549764.738	6837360.466	8.999
MW10b	549764.372	6837358.272	8.833
MW11	549645.208	6837437.888	6.628
WB+MW	550003.157	6837345.055	37.925

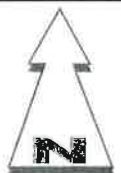


Legend

- Monitoring Points 2012
- Air Photo 2009



Disclaimer: MGA all measurements have been taken to ensure that all operations conducted under the licence are done in accordance with the terms of the licence. The information provided on this map is for information only and should not be used for any other purpose. The accuracy of the information provided is not guaranteed. The information shown on this map is a copyright of the State of Queensland and the State Department of Lands.



16/01/13