

Frogs

OF BYRON SHIRE



WHAT CAN YOU DO TO HELP NATIVE FROGS?

1. Maintain frog habitat by retaining areas of native vegetation, leaving logs, dead trees and bush rocks in place.
2. Create and enhance frog habitat in cleared or disturbed areas by removing weeds, restricting stock from waterways and allowing native species to flourish.
3. Frogs are sensitive to chemicals; limit the use of chemicals in the house and garden.
4. Domestic pets, including dogs and cats, can prey on frogs. Keep pets confined between dusk and dawn when frogs are active.
5. To avoid spreading the chytrid fungus which kills frogs, do not move frogs or tadpoles between areas and do not touch frogs unless absolutely necessary.
6. Cane toads are a major threat to frogs! Get involved in cane toad control programs.

Byron Shire is an area incredibly rich in wildlife. A large number of frog species occur in the shire, with 28 different species of native frogs identified so far. Of these 28 species, four are listed as "vulnerable" under the *NSW Threatened Species Conservation Act 1995*. Amphibians worldwide face many threats including habitat destruction and competition with introduced species.

The one introduced amphibian in the shire - Cane toad (*Bufo marinus*) - is highly poisonous and threatens many other wildlife species, including our native frogs. Byron Shire Council's 'Getting a Grip on Cane Toads' project is helping to reduce the threat of cane toads to local wildlife. There have been

many community toad musters, which reduce the numbers of cane toads and equip the community to carry out their own cane toad control programs. Council is also actively involved in restoring frog habitats on public and private land through the Bush Regeneration Team, Land for Wildlife and support for Landcare and Dunecare projects.

This poster shows the diversity of frog species in Byron Shire. Many of the frogs are rarely seen but are often heard through their distinct calls. The calls for each of these species can be found by following the links at <http://www.byron.nsw.gov.au/biodiversity>

TUSKED FROG *Adelotus brevis*



SIZE: Up to 50mm
HABITAT: Under leaf litter, logs or stones, beside water bodies in wet forests or inundated grasslands

POUCHED FROG *Assa darlingtoni*



SIZE: Up to 30mm
HABITAT: Amongst leaf litter in mountain forests
STATUS: 'Vulnerable'

COMMON EASTERN FROGLET *Crinia signifera*



SIZE: 30mm
HABITAT: A wide range of habitats including domestic areas. Often beneath rocks and vegetation near water bodies

WALLUM FROGLET *Crinia tinnula*



SIZE: 30mm
HABITAT: Limited to acid Paperbark swamps and Wallum vegetation
STATUS: 'Vulnerable'

FLETCHER'S FROG *Lechriodus fletcheri*



SIZE: Up to 50mm
HABITAT: Leaf litter or tree hollows in wet forests close to breeding pools and streams.

ORNATE BURROWING FROG *Limnodynastes ornatus*



SIZE: Up to 45mm
HABITAT: A wide range of habitats

BROWN-STRIPED FROG *Limnodynastes peronii*



SIZE: Up to 75mm
HABITAT: Wide range of habitats including disturbed and domestic areas.

SPOTTED GRASS FROG *Limnodynastes tasmanianus*



SIZE: Up to 50mm
HABITAT: Adaptable, usually under cover and near water bodies.

NORTHERN BANJO FROG *Limnodynastes terraereginae*



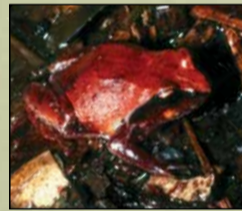
SIZE: Up to 80mm
HABITAT: A variety of habitats. Usually near permanent water after rain.

GREAT BARRED FROG *Mixophyes fasciolatus*



SIZE: Males 65mm Females 100mm
HABITAT: In leaf litter or stream banks of forests

LOVERIDGE'S FROG *Philoria loveridgei*



SIZE: Up to 30mm
HABITAT: Moss or soft moist soil in wet mountain forests
STATUS: 'Vulnerable'

RED-BACKED TOADLET *Pseudophryne coriacea*



SIZE: Up to 35mm
HABITAT: Leaf litter, logs and fallen bark in wet areas

DUSKY TOADLET *Uperoleia fusca*



SIZE: Up to 30mm
HABITAT: Open forests, tussock grasslands and shrub lands

GREEN TREE FROG *Litoria caerulea*



SIZE: Up to 110mm
HABITAT: Common in a wide variety of habitats including domestic areas

RED-EYED TREE FROG *Litoria chloris*



SIZE: Up to 70mm
HABITAT: Rainforests and wet sclerophyll forests and around flooded areas after heavy rain.

BLEATING TREE FROG *Litoria dentata*



SIZE: Up to 45mm
HABITAT: Ground and vegetation near ponds or swamps often hiding by day under stones or loose bark

EASTERN DWARF TREE FROG *Litoria fallax*



SIZE: Up to 35mm
HABITAT: On vegetation, commonly reeds, bordering water and also on banana leaves

FREYCINET'S FROG *Litoria freycineti*



SIZE: Up to 45mm
HABITAT: A variety of habitats usually found in swamps

DAINTY GREEN TREE FROG *Litoria gracilenta*



SIZE: Up to 45mm
HABITAT: Usually dense vegetation such as reeds near water, in hollows and tree foliage

BROAD-PALMED FROG *Litoria latopalmaria*



SIZE: Up to 45mm
HABITAT: Variety of habitats, including leaf litter near water

ROCKET FROG *Litoria nasuta*



SIZE: Up to 55mm
HABITAT: Usually near water bodies including those in open and Melaleuca forests

WALLUM SEDGE FROG *Litoria longiburensis*



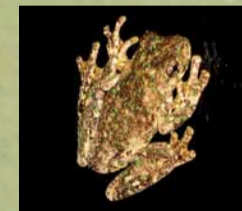
SIZE: Up to 30mm
HABITAT: On vegetation of swamps and marshes with acidic water
STATUS: 'Vulnerable'

PEARSON'S TREE FROG *Litoria pearsoniana*



SIZE: Up to 40mm
HABITAT: Near streams and creeks in rainforest gullies

PERON'S TREE FROG *Litoria peronii*



SIZE: Up to 65mm
HABITAT: Variety of habitats including domestic areas

WHIRRING TREE FROG *Litoria rovelata*



SIZE: Up to 40mm
HABITAT: Variety of habitats near water bodies and in wet and dry sclerophyll forests and swamps

TYLER'S TREE FROG *Litoria tyleri*



SIZE: Up to 50mm
HABITAT: On vegetation near permanent water including reedy lagoons and swamps

VERREAUX'S FROG *Litoria verreauxii*



SIZE: Up to 35mm
HABITAT: Variety of habitats, usually near permanent water

STONEY CREEK FROG *Litoria wilcoxii*



SIZE: Up to 75mm
HABITAT: Variety of habitats often near rocky streams

CANE TOAD *Bufo marinus*



SIZE: Up to 250mm
HABITAT: A variety of habitats especially urban and disturbed areas. Prefers low or sparse vegetation

Cane toads were introduced into the Byron Shire in the 1960s. They have spread throughout the shire especially along the disturbed coastal areas.

They are a threat to our local biodiversity because they are poisonous at all stages of life to predators. They also prey on local native animals and out compete native animals for food and habitat.

You can help decrease the spread of toads by:

- Toad proofing your dam or pond
- Growing native plants
- Attending cane toad musters
- Not leaving pet food outside
- Turning off outside lights

To find out more about cane toad prevention go to Council's website: www.byron.nsw.gov.au/biodiversity



Byron Shire Council
biodiversity@byron.nsw.gov.au
www.byron.nsw.gov.au/biodiversity
(02) 6626 7000



Your Environmental Levy at Work
This Project is a Byron Shire Council Environmental Levy Initiative.



NEW SOUTH WALES GOVERNMENT
Department of Environment & Climate Change